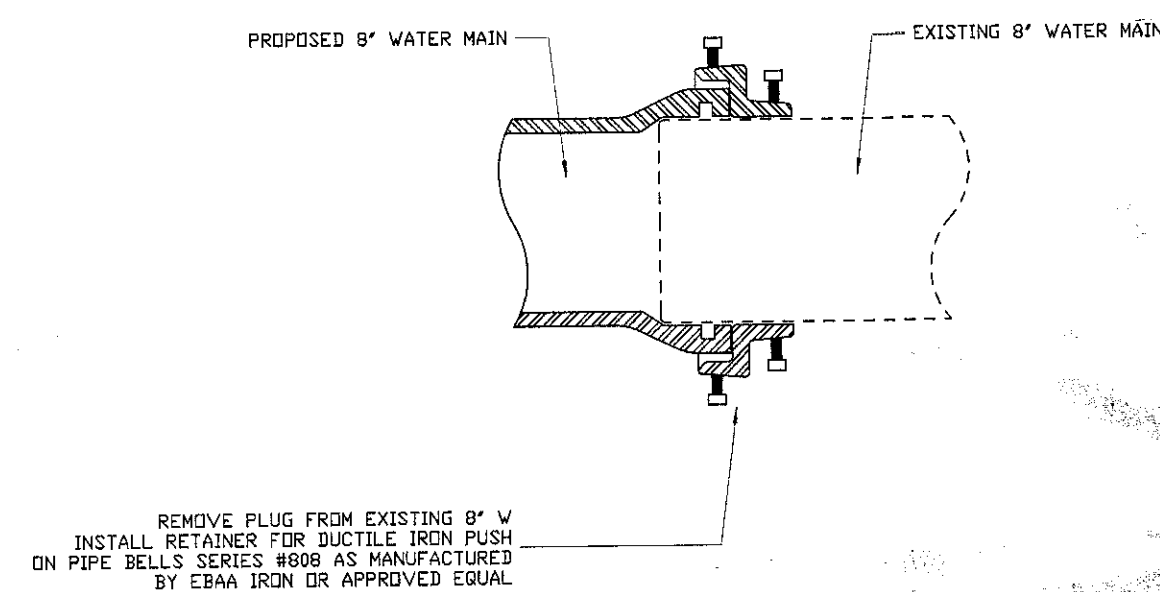


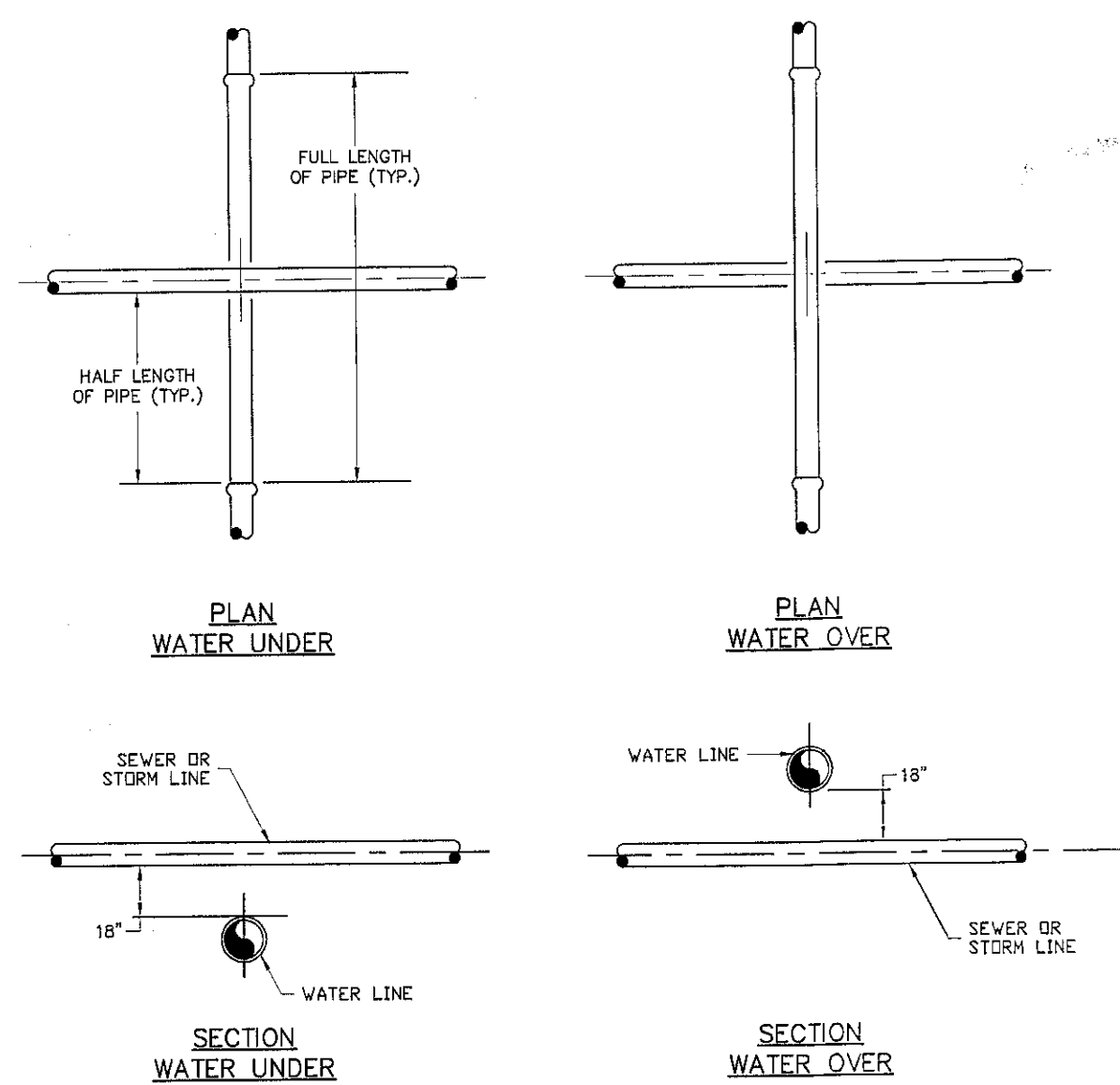
1. ALL MINIMUM DISTANCES, DESIGNS, MATERIALS, DETAILS, CONSTRUCTION, AND INSPECTION REQUIREMENTS SHALL COMPLY WITH:
  - A) THE LATEST EDITION OF THE NEW YORK STATE HEALTH DEPARTMENT BULLETIN 42 "RECOMMENDED STANDARDS FOR WATER WORKS" BY THE GREAT LAKES UPPER MISSISSIPPI RIVER BOARD OF STATE SANITARY ENGINEERS
  - B) ALL REQUIREMENTS SET FORTH BY THE ALBANY COUNTY HEALTH DEPARTMENT (RCHD)
  - C) ALL REQUIREMENTS SET FORTH BY THE TOWN OF BETHLEHEM.
2. THERE SHALL BE NO CHANGES ON THESE PLANS IN ADVANCE OF, OR DURING CONSTRUCTION WITHOUT PRIOR APPROVAL OF THE DESIGN ENGINEER, THE RCHD, AND THE MUNICIPALITY.
3. ALL WATER MAINS SHALL BE DISINFECTED, FLUSHED AND TESTED FOR BACTERIA IN ACCORDANCE WITH AWWA STANDARD C650 (ITEM 51 TO BE DELETED) AND THE REQUIREMENTS OF THE RCHD.
4. VERTICAL SEPARATION BETWEEN WATER AND SANITARY SHALL BE 18" MINIMUM AT CROSSINGS OR ENCASE SANITARY PIPE IN CONCRETE 10" ON EITHER SIDE OF WATER MAIN, CENTERING ONE FULL LENGTH OF WATER MAIN OVER THE SANITARY SEWER LINE.
5. HORIZONTAL SEPARATION BETWEEN WATER AND SANITARY SHALL BE 10' MINIMUM.
6. ALL PIPE SHALL CONFORM TO AWWA C-900 AND SHALL BE UL AND FM APPROVED FOR SIZES 4" THRU 12".
7. FITTINGS FOR C-900 PVC PIPE SHALL BE MANUFACTURED IN ONE PIECE OF INJECTED MOLDED PVC COMPOUND MEETING ASTM D1784; FITTINGS SHALL BE CLASS 150 AND CONFORM TO REQUIREMENTS OF 10" BELL'S SHALL BE GASKETED JOINTS CONFORMING TO ASTM D3339 WITH GASKETS CONFORMING TO ASTM F477.
8. PRESSURE AND LEAKAGE TESTS SHALL BE PERFORMED IN ACCORDANCE WITH THE LATEST EDITION OF AWWA STANDARD C600.
9. THRUST BLOCK CONCRETE SHALL BE 3000 PSI (28 DAY STRENGTH).
10. ALL GATE VALVES SHALL BE CAST IRON, MECHANICAL JOINT, BRONZE MOUNTED, RESILIENT WEDGE, AWWA C-509.
11. THE DEVELOPERS SHALL ENGAGE A LICENSED PROFESSIONAL ENGINEER TO SUPERVISE CONSTRUCTION AND TO CERTIFY THAT THE FACILITIES HAVE BEEN CONSTRUCTED IN ACCORDANCE WITH THE APPROVED ENGINEERS REPORT, PLANS AND PERMIT TO CONSTRUCT.
12. ALL PIPING AND APPURTENANCES SHALL BE APPROPRIATELY SUPPORTED AND INSTALLED IN A MANNER WHICH ALLOWS FOR EXPECTED EXPANSION AND CONTRACTION UNDER ANTICIPATED CONDITIONS.
13. LAB REPORTS ON ALL WATER SAMPLES MUST BE FURNISHED TO THE ALBANY COUNTY HEALTH DEPARTMENT.
14. WATER USED FOR DISINFECTING MAINS, IF DISCHARGED TO ANY STREAM OR BODY OF WATER, MUST HAVE A CHLORINE RESIDUAL NOT EXCEEDING 0.1mg/L AT THE POINT OF DISCHARGE.
15. WATER METERS SHALL BE INSTALLED ON EACH SERVICE LINE AS REQUIRED BY THE TOWN OF BETHLEHEM AND DEFINED IN THE LATEST ORDINANCE.

## GENERAL WATER NOTES



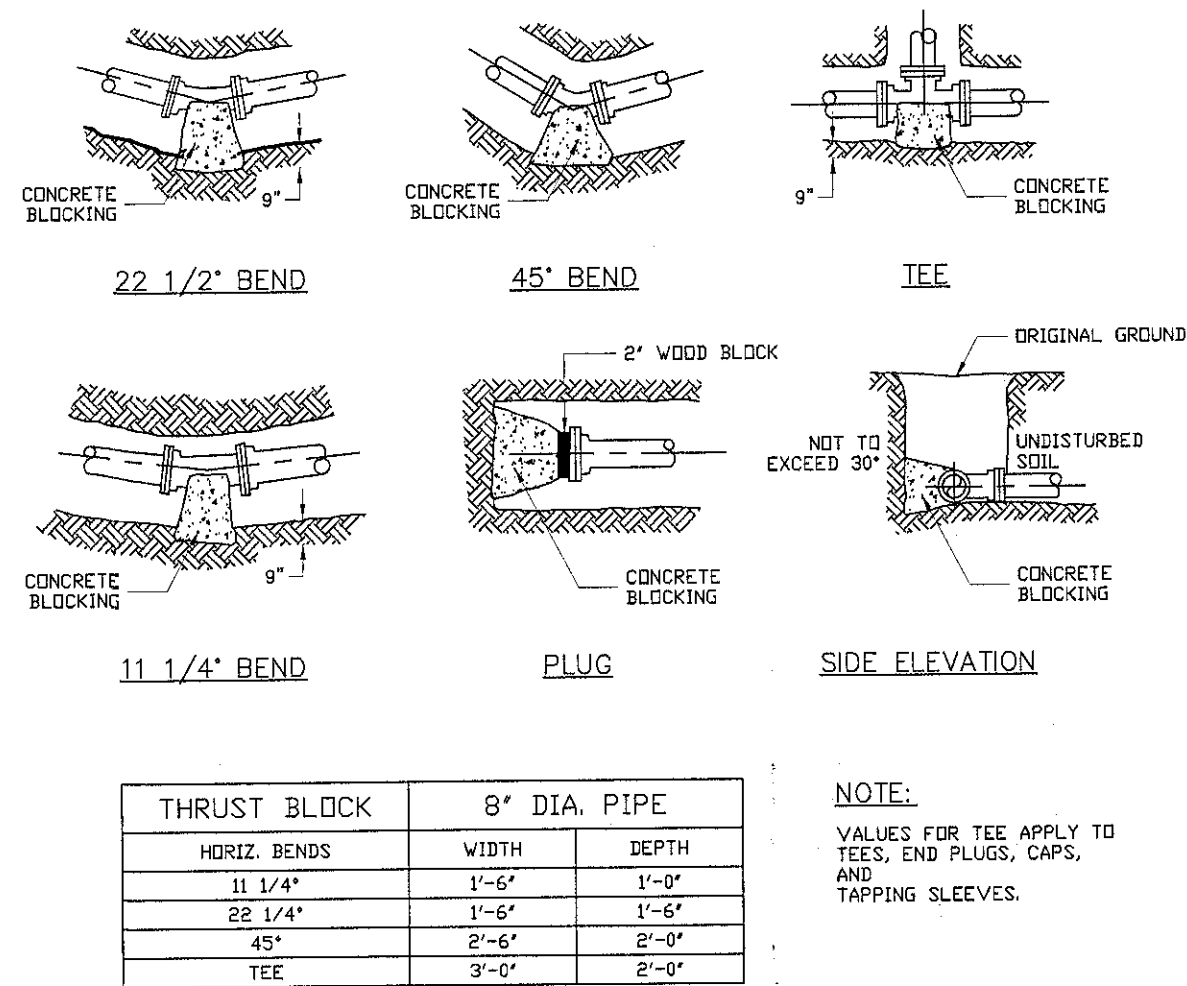
## WATER MAIN CONNECTION EXISTING TO PROPOSED

SCALE: NONE



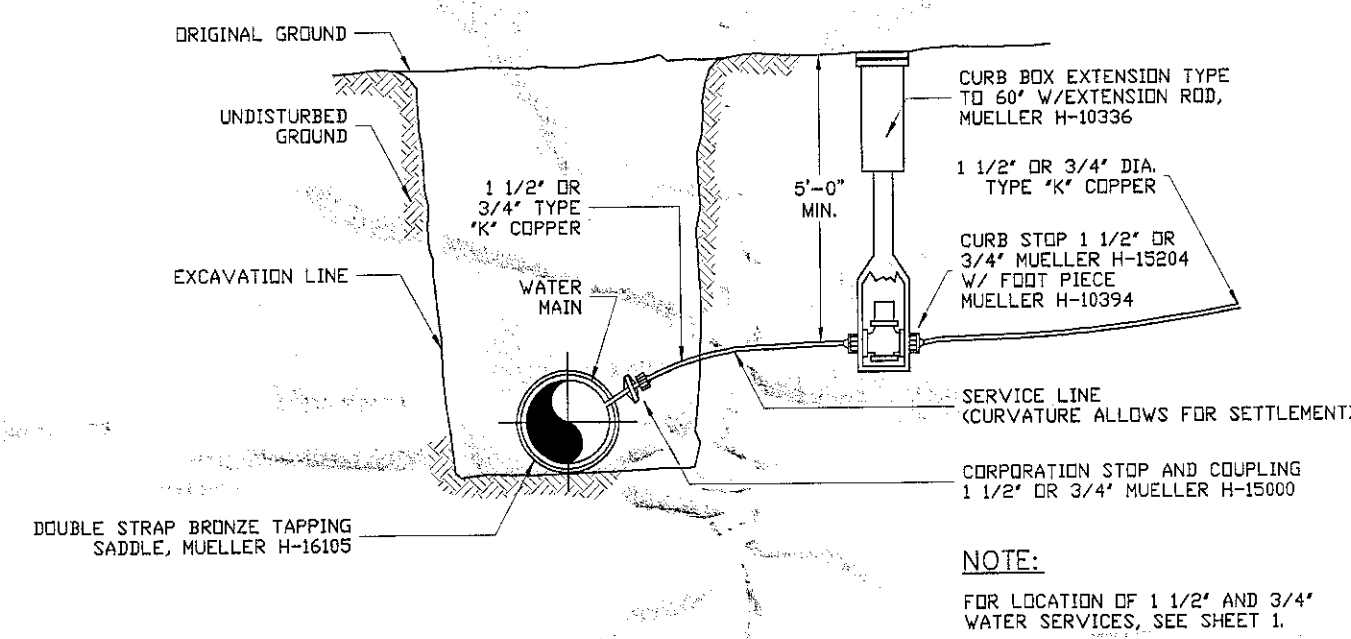
## PIPE CROSSING DETAIL

SCALE: NONE



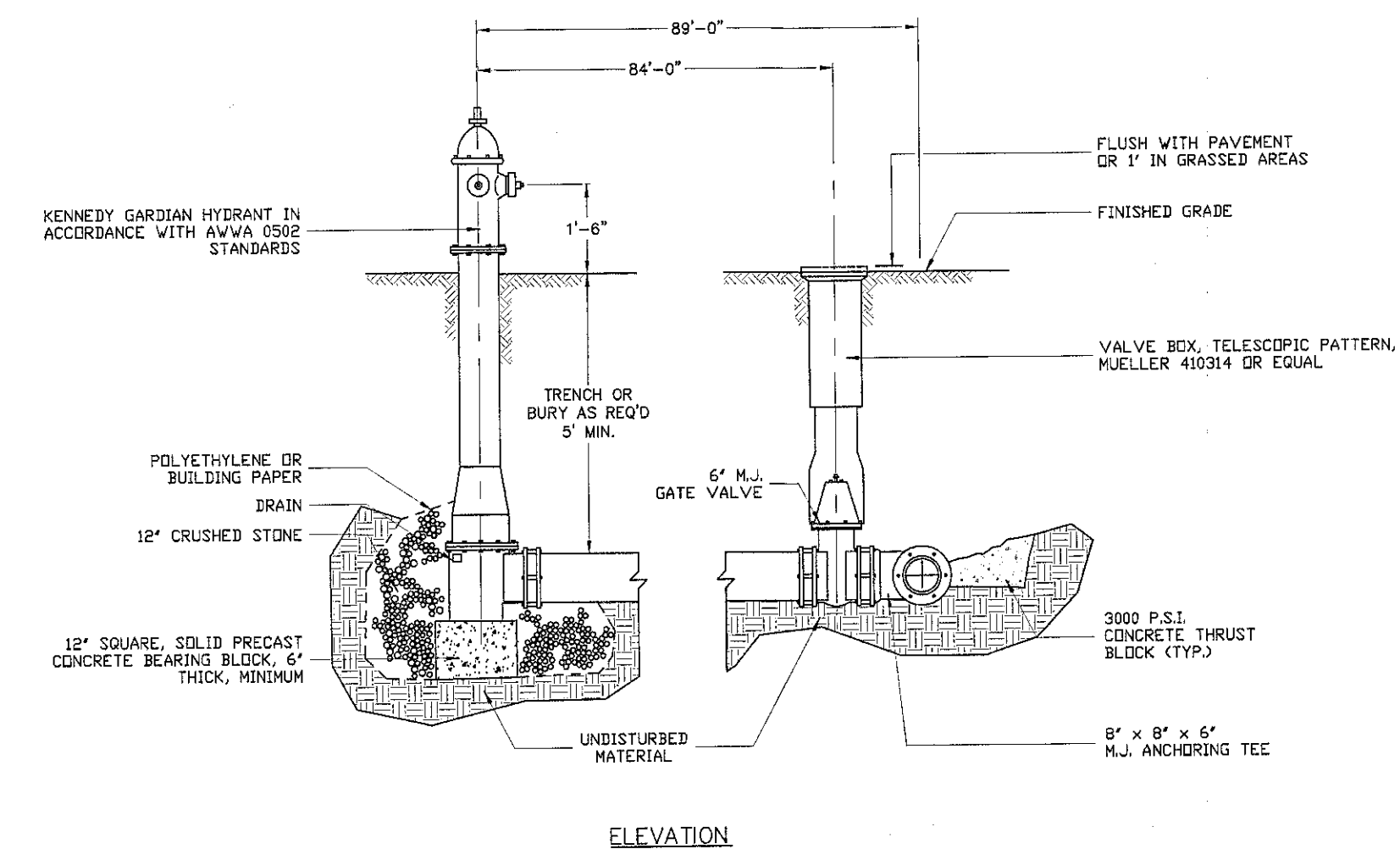
## THRUST BLOCK DETAIL

SCALE: NONE



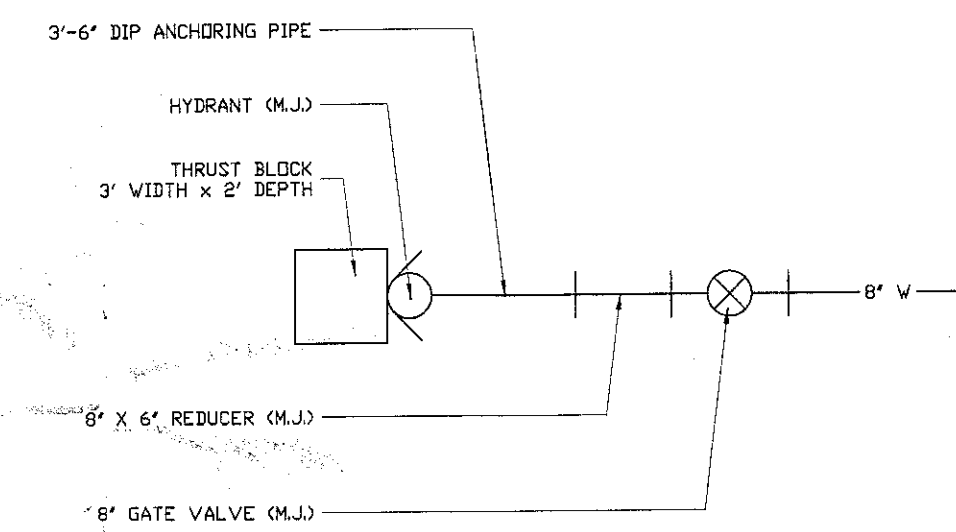
## WATER SERVICE CONNECTION

SCALE: NONE



## TYPICAL HYDRANT DETAIL

SCALE: NONE

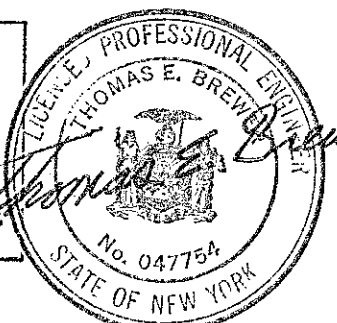


## WATER MAIN DEAD END DETAIL

SCALE: NONE

PLANNING BOARD  
TOWN OF BETHLEHEM  
ALBANY COUNTY, NEW YORK  
By direction of the Chairman.  
These drawings are hereby approved.  
See sheet(s) 2 of 8  
for date and signature

TOWN OF BETHLEHEM, NEW YORK  
PLANNING DEPT. ORIGINAL  
- SCANNED -



## WATER DETAILS

TITLE	DRAWN BY	DATE	DATE	SCALE	AS SHOWN	REVISION
	JDF	04/01/2015				

DRAWING NUMBER

8  
8

APR. 14-23