

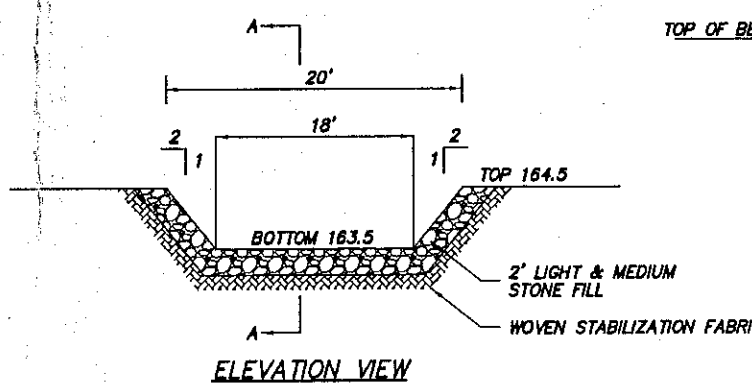
MAP REFERENCE:

- 1. "MEADOWVIEW II" SUBDIVISION, AS-BUILT SURVEY, TOWN OF BETHLEHEM, ALBANY COUNTY, N.Y., AS PREPARED BY PAUL E. HITE.
- 2. MEADOWVIEW II SUBDIVISION, FINAL PLAT PLAN, LANDS OF HPMC, LLC, TOWN OF BETHLEHEM, ALBANY COUNTY, N.Y., DATED SEPTEMBER 29, 2008, LAST REVISED OCTOBER 13, 2009, AS PREPARED BY INGALLS AND ASSOCIATES, LLP.

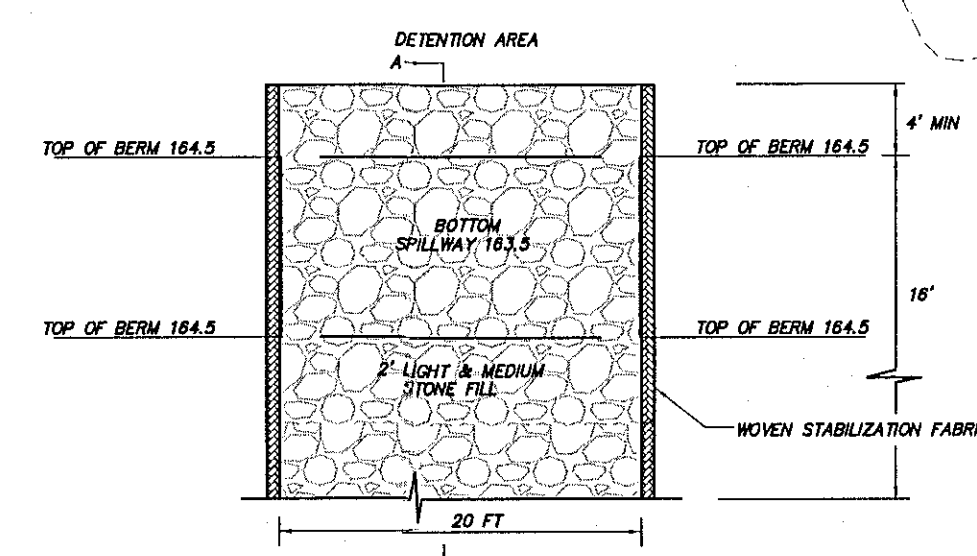
SOIL DATA: PERFORMED BY ABD ENGINEERS, LLP ON 12/13/2016.
TP1:
0-12" TOPSOIL
12"-90" BROWN AND GRAY CLAY
NO GROUNDWATER

NOTES:

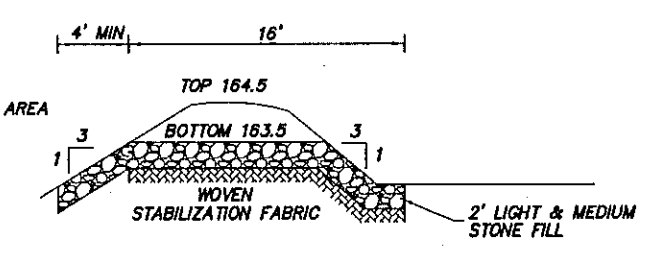
- 1. BASE MAPPING PREPARED FROM MAP REFERENCE.
- 2. THE PLANS SHOW SOME KNOWN STRUCTURE, ABOVEGROUND STRUCTURES AND/OR UTILITIES BELIEVED TO EXIST IN THE WORKING AREA. EXACT LOCATION OF WHICH MAY VARY FROM THE LOCATIONS INDICATED. IN PARTICULAR, THE CONTRACTOR IS WARNED THAT THE EXACT OR EVEN APPROXIMATE LOCATION OF SUCH PIPE LINES, SUBSURFACE STRUCTURES AND/OR UTILITIES IN THE ARE MAY BE DIFFERENT FROM THAT SHOWN OR MAY NOT BE SHOWN AND IT SHALL BE HIS RESPONSIBILITY TO PROCEED WITH GREAT CARE IN EXECUTING ANY WORK. 48 HOURS BEFORE YOU DIG, DRILL OR BLAST, CALL U.P.O. (1-800-962-7962) TOLL FREE.
- 3. THERE IS CURRENTLY AN EXISTING PERMIT NYR101978. THE INTENT OF THESE PLANS IS TO UPDATE THE STORMWATER REQUIREMENTS FOR GENERAL COMPLIANCE WITH NYSDEC'S 2015 STORMWATER REQUIREMENTS AND TOWN OF BETHLEHEM REQUIREMENTS. REFER TO MAP REFERENCE FOR FULL SUBDIVISION SET.
- 4. UPSTREAM CONSTRUCTION SHALL BE COMPLETED AND STABILIZED PRIOR TO CONNECTION TO A DOWNSTREAM BIORETENTION FACILITY. A DENSE AND VIGOROUS COVER SHALL BE ESTABLISHED OVER THE CONTRIBUTING PERVIOUS DRAINAGE AREA BEFORE RUNOFF CAN BE ACCEPTED INTO THE FACILITY.
- 5. SOIL RESTORATION SHALL BE PERFORMED AFTER THE FINAL SITE WORK IS COMPLETED IN CONFORMANCE WITH THE NYS SMDM SECTION 5.1.6 AND THE NYS STANDARDS AND SPECIFICATIONS FOR EROSION AND SEDIMENT CONTROL 2016 P. 4.52.



EMERGENCY SPILLWAY DETAIL

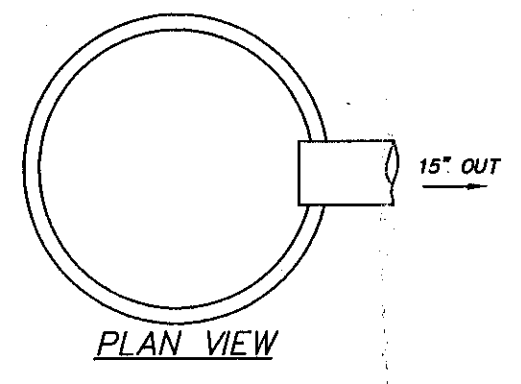
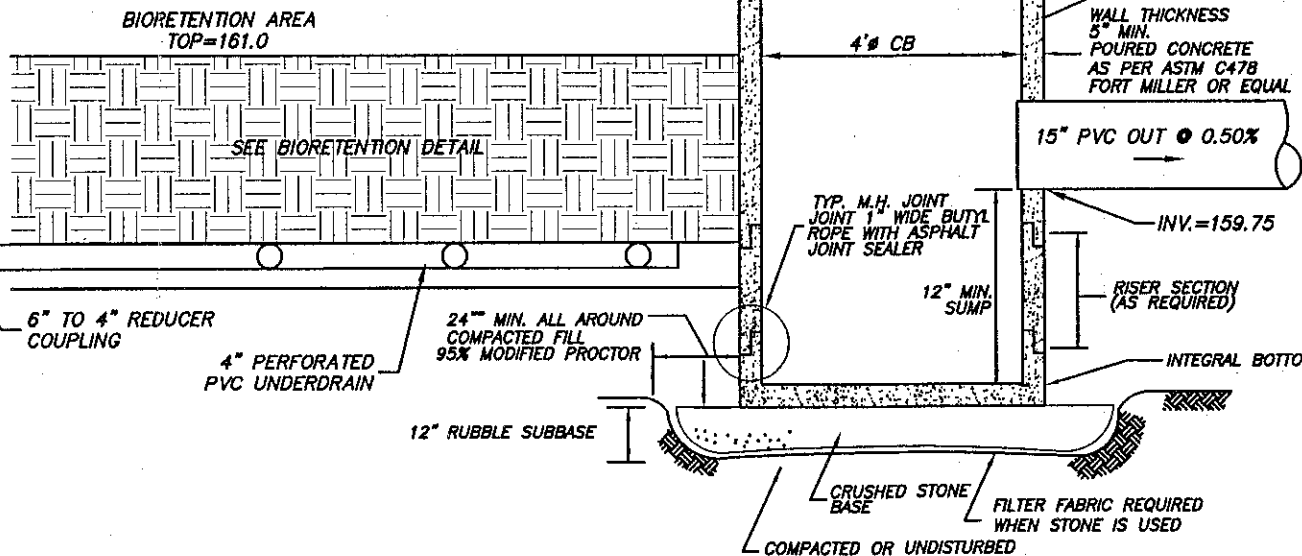


SECTION A-A

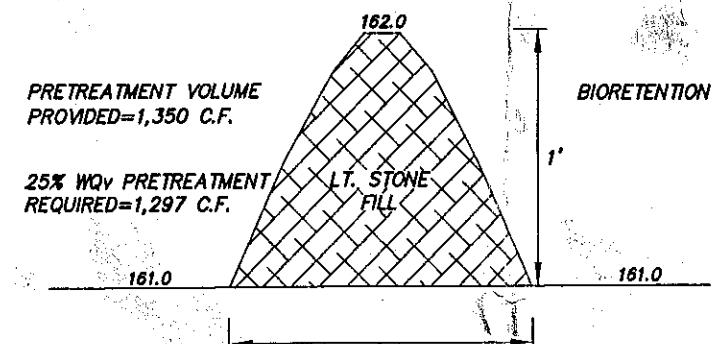


SECTION A-A

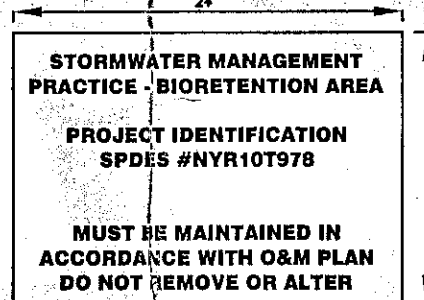
SECTION VIEW
OUTLET CONTROL STRUCTURE #1 DETAIL



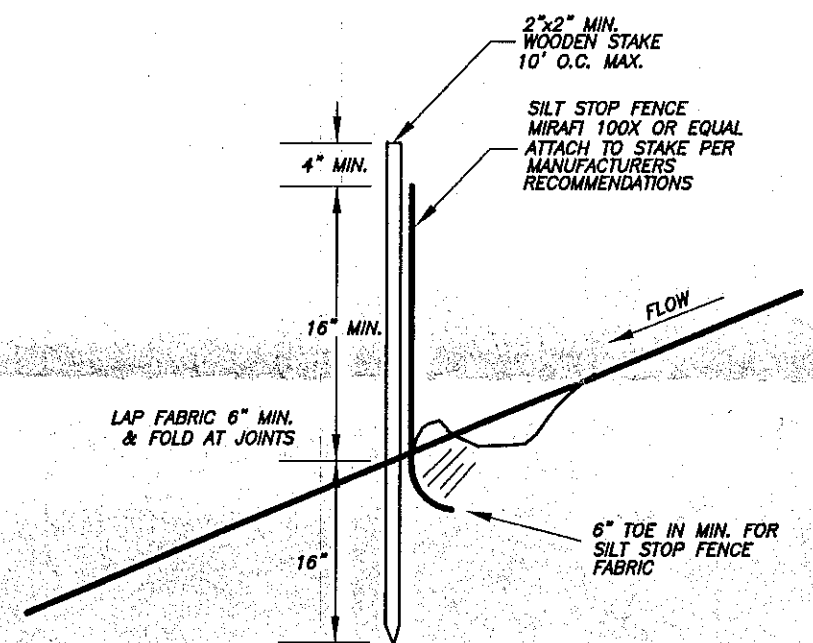
STONE BERM DETAIL



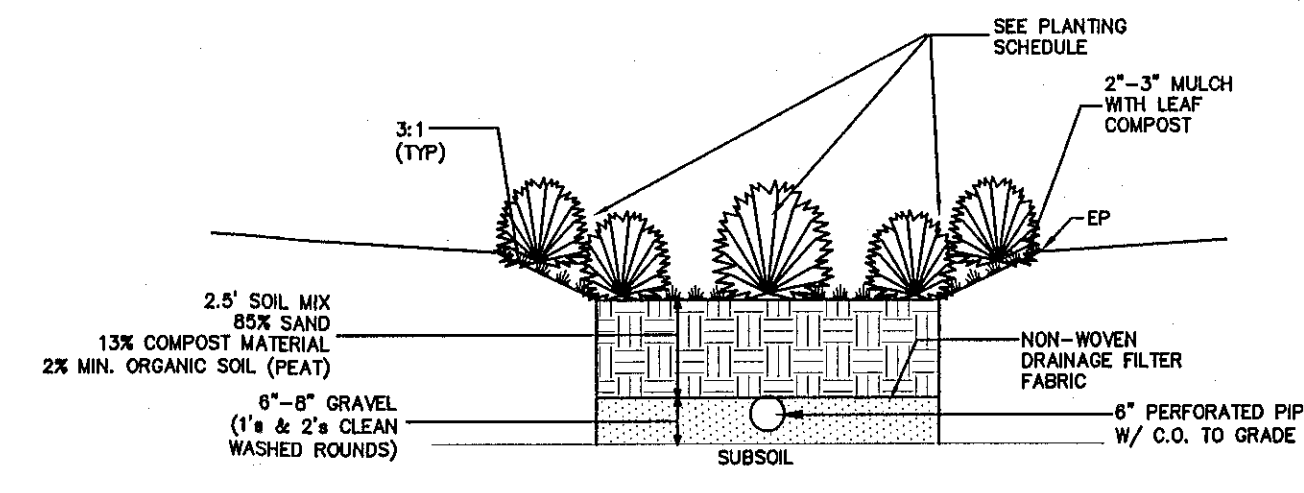
STORMWATER MANAGEMENT PRACTICE SIGN



SILT FENCE DETAIL



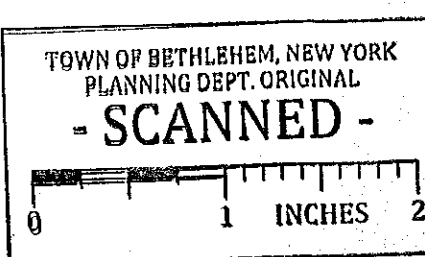
BIORETENTION DETAIL



TYPICAL BIORETENTION PLANTING PLAN

KEY	SCIENTIFIC NAME	COMMON NAME	QUANTITY	COMMENTS
MB	ILEX VERTICILLATA	WINTERBERRY	10	#7 CONTAINER
CF	LOBELIA CARDINALIS	CARDINAL FLOWER	24	#1 CONTAINER
IV	IRIS VERSICOLOR	BLUE FLAG IRIS	24	#1 CONTAINER
CS	CAREX SPP.	SEDGES	24	#1 CONTAINER

NOTE: SEDGES, CARDINAL FLOWER, WINTERBERRY AND BLUE FLAG IRIS TO BE PLANTED 5' ON CENTER.



PLANNING BOARD
TOWN OF BETHLEHEM
ALBANY COUNTY, NEW YORK
FINAL PLAT APPROVAL
WHEN SIGNED BY THE DUTY AUTHORIZED OFFICER OF THE PLANNING BOARD, THIS ENDORSEMENT CONSTITUTES FINAL APPROVAL OF THIS PLAT
SIGNED: [Signature]
DATE: 03/21/2017
SFE ALSO CERTIFICATE OF APPROVAL OF FINAL PLAT NO. 241 CF A1 02/21/2017

ALTERATION OF THIS DOCUMENT EXCEPT BY A LICENSED PROFESSIONAL ENGINEER IS ILLEGAL
[Professional Engineer Seal]
LUIGI A. PALLESCHI, P.E.
N.Y.S. LICENSE NO. 94676

STORMWATER PLAN & DETAILS
MEADOWVIEW II
SUBDIVISION AMENDMENT
TOWN OF BETHLEHEM COUNTY OF ALBANY
STATE OF NEW YORK
ABD ENGINEERS, LLP
411 Union Street
Schenectady, NY 12305
518-377-0315 Fax 518-377-0379
www.abdeng.com
DATE: DECEMBER 28, 2016 SCALE: 1" = 40' DWG. 4783A-SW GRADING SHEET OF 1

Cert 241 CF A1 02/21/2017