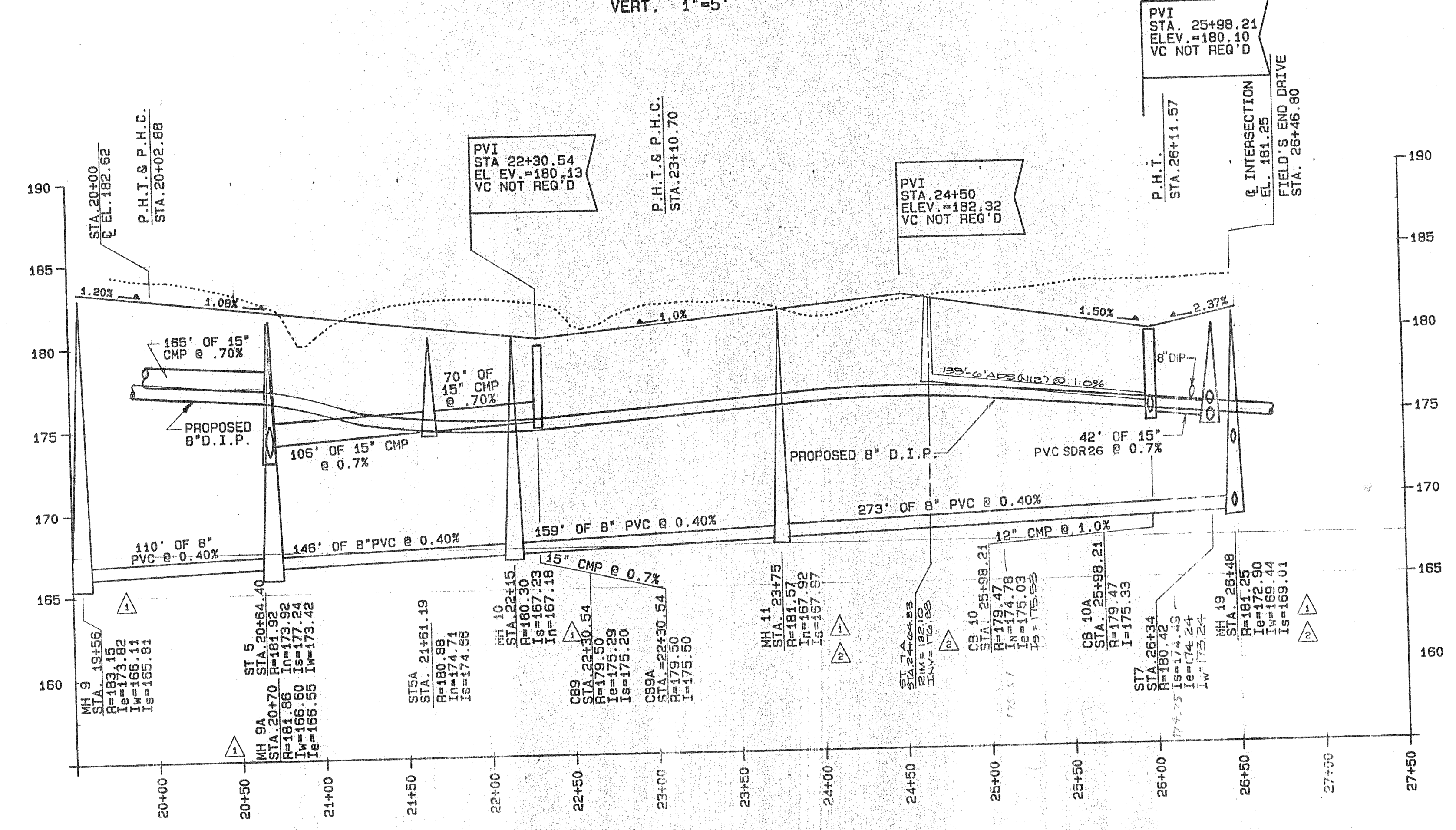


PROFILE OF FIELDS END DRIVE

SCALE: HORIZ. 1"=50'
VERT. 1"=5'



PROFILE OF COLUMBINE DRIVE

SCALE: HORIZ. 1"=50'
VERT. 1"=5'

- NOTES
- GRADE OF GRAVITY SEWERS ARE CALCULATED BY THE FOLLOWING CRITERIA:
 - LENGTH OF PIPE RUN IS FROM CENTERLINE OF RESPECTIVE MANHOLES.
 - PERCENT GRADE IS CALCULATED FROM CENTERLINE TO CENTERLINE OF RESPECTIVE MANHOLES.

ALL CONSTRUCTION DISTURBANCES ON STATE OR PRIVATE LAND TO BE RESTORED BY CONTRACTOR

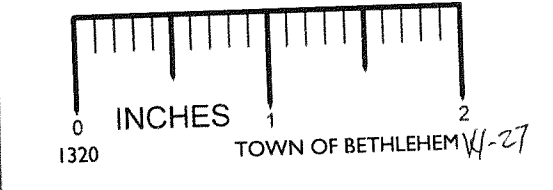
UNAUTHORIZED ALTERATIONS OR ADDITIONS TO THIS DOCUMENT IS A VIOLATION OF SECTION 7209 SUBDIVISION 2 OF THE NEW YORK STATE EDUCATION LAW

REVISIONS			
DATE	BY	DESCRIPTION	SYMBOL
8/87	TM	ADDED MH 9A AND CHANGED INVERTS AND DEPTHS OF MH 9, 10, 11 & 19.	△
11/87	JB	MOVED MH 10, 11 AND 19	△
11/87	JB	ADDED NOTE REGARDING GRADE OF GRAVITY SEWERS.	△
12/89	JB	UTILITIES EDITED PER FINAL GRADING	△
3/12/90	JB	FINAL REVISIONS	NONE
4/19/90	JB	DOH EDITS	NONE
2-11-93	JB	REVISIONS per Town of Bethlehem Engineering Department Review	NONE

J. KENNETH FRASER
AND ASSOCIATES, P.C.
CONSULTING ENGINEERS
RENSELAER, NEW YORK

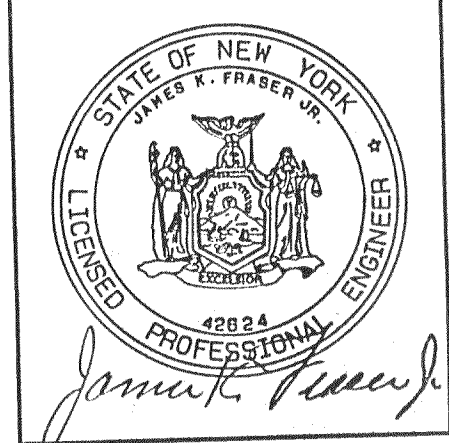
LANDS FORMERLY OF
R & R ASSOCIATES
NOW
THE MEADOWS AT BETHLEHEM,
A NEW YORK PARTNERSHIP AND
YORK LAND DEVELOPMENT
CORPORATION

THE MEADOWS
SUBDIVISION



TOWN OF BETHLEHEM
NEW YORK
RECEIVED
FEB 12 1993

SCALE: AS NOTED



PROJ. ENG'R: JFB
DRAWN BY: HLW
ASSEMBLED BY: EJS
CHECKED BY: JFK

REF. NO. 238645.014

SHEET TITLE: PROFILE- COLUMBINE DRIVE & FIELDS END DRIVE

DATE: JANUARY 1987 SHEET 14 OF 26

NOTE: SEWER LINES ARE TO BE INSTALLED UNDER THE SUPERVISION OF A NEW YORK STATE LICENSED PROFESSIONAL ENGINEER. ENGINEER SHALL SUBMIT A CERTIFICATE STATING THAT THE CONSTRUCTED FACILITIES HAVE BEEN CONSTRUCTED IN ACCORDANCE WITH THE APPROVED PLANS. CERTIFICATION MUST BE RECEIVED BY THE ALBANY COUNTY HEALTH DEPARTMENT WITHIN SIXTY (60) DAYS FROM THE COMPLETION OF CONSTRUCTION.
NOTE: WATER QUALITY-TYPE PIPE MATERIAL (D.I.P. OR PVC SDR 26) MUST BE UTILIZED FOR SANITARY AND STORM SEWERS IN AREAS WHERE A TEN FOOT HORIZONTAL OR 18" VERTICAL SEPARATION DISTANCE FROM WATER MAINS CANNOT BE MAINTAINED.
NOTE: ALL WATER MAINS ARE TO BE INSTALLED, DISINFECTED, AND TESTED IN ACCORDANCE WITH AWWA STANDARD C601 OR OTHER METHOD ACCEPTABLE TO THE ALBANY COUNTY HEALTH DEPARTMENT.