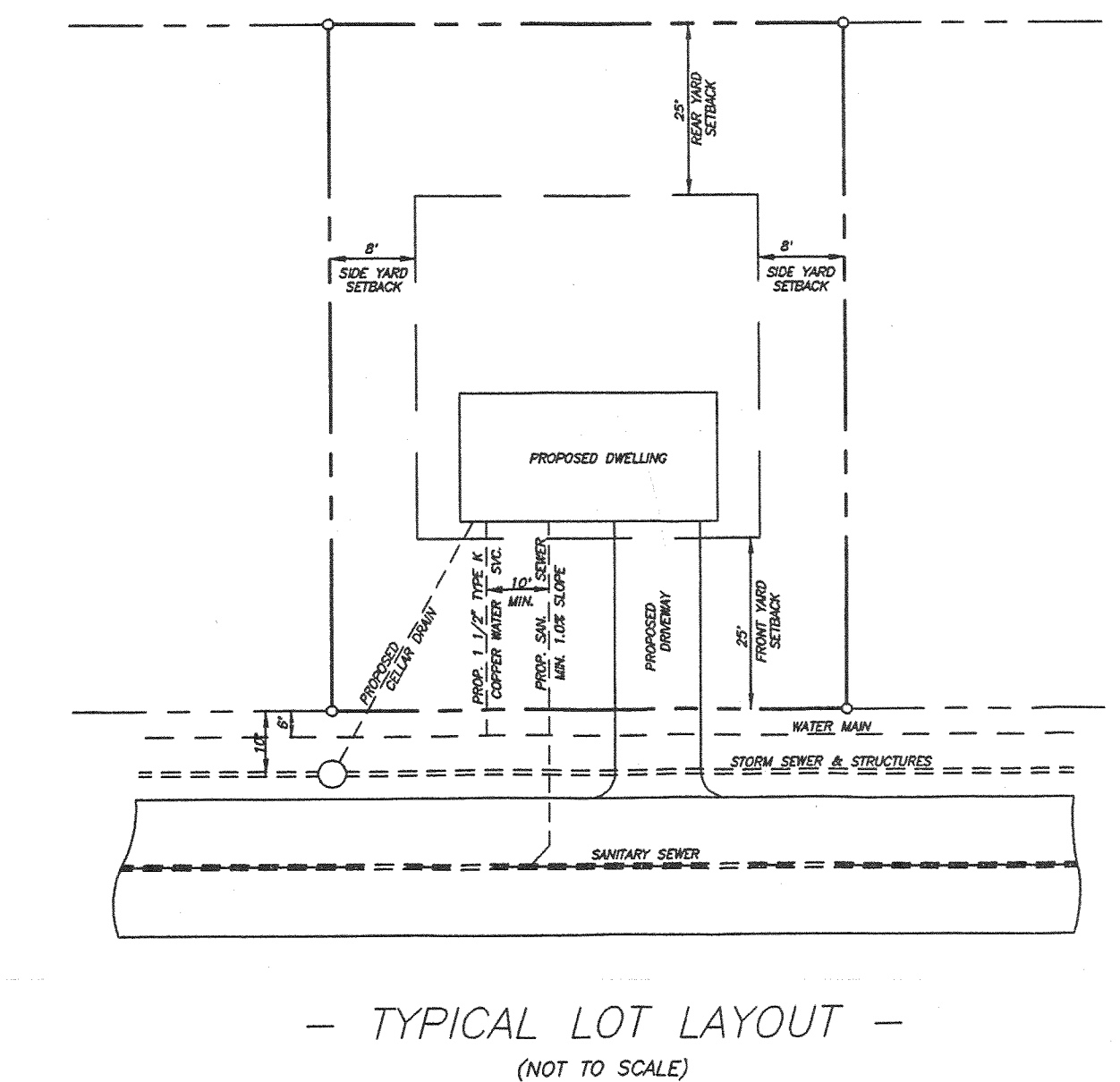
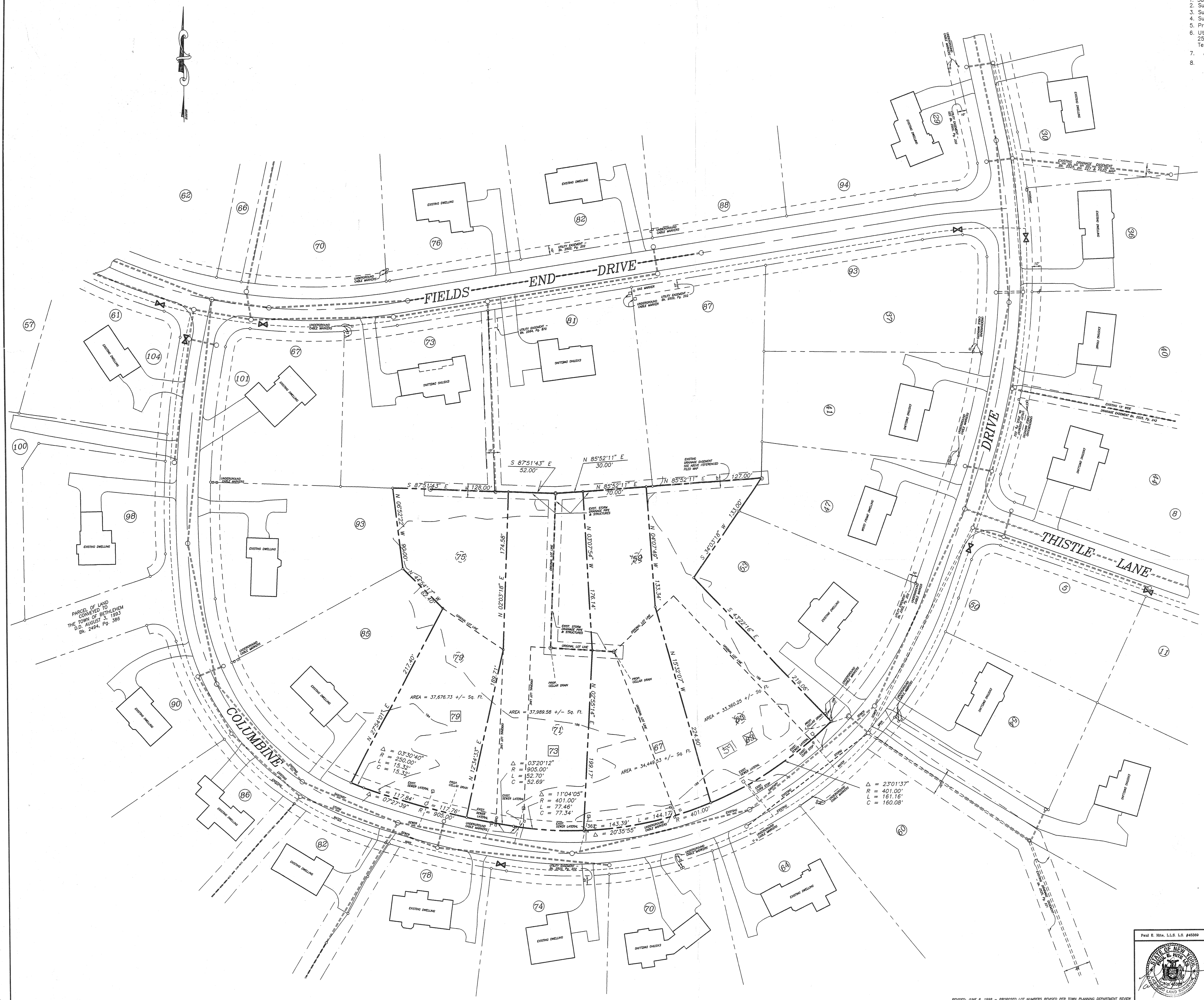


MAP REFERENCE:
 The Meadows At Bethlehem, A New York Partnership & York Land Development Corporation, The Meadows Subdivision, Section 2, dated September, 1989, revised to May 2, 1993, by Paul E. Hite, L.S. and J. Kenneth Fraser and Associates, P.C., as filed in the Albany County Clerk's Office on May 24, 1993, in drawer 172, as map no. 9770.

NOTES:
 1. Subdivision is located in "AB" Residential Zone.
 2. Subdivision is located in Water District No. 1, Bender Lane Extension (WD216).
 3. Subdivision is located in Bethlehem School District.
 4. Subdivision is located in Elmhurst Fire District (FD202).
 5. Proposed revised Lots meet all zoning requirements.
 6. Utility easement recorded in the Albany County Clerk's Office on January 28, 1994, in Book 2502 of deeds, at page 202, includes Niagara Mohawk Power Corporation and New York Telephone Co. There is physical indication that Cable Television is located in the same easement.
 7. denotes original Lot Number.
 8. denotes proposed Lot Number.



TOWN OF BETHLEHEM PLANNING BOARD
 PLANNING BOARD
 TOWN OF BETHLEHEM
 ALBANY COUNTY, NEW YORK
FINAL PLAT APPROVAL
 WHEN SIGNED BY THE DULY AUTHORIZED OFFICER OF THE PLANNING BOARD, THIS ENDORSEMENT CONSTITUTES FINAL APPROVAL OF THIS PLAT.
 SIGNED *Angela C. Harkness*
 TITLE CHAIRMAN
 DATE JUL 09 1998
 SEE ALSO CERTIFICATE OF APPROVAL OF FINAL PLAT NO. 20-52-F-115

MAP OF PROPOSED
 LOT LINE REVISIONS
 LOTS No. 59, 63, 71, 75 & 79
 COLUMBINE DRIVE
 "THE MEADOWS SUBDIVISION SECTION 2"
 TOWN OF BETHLEHEM

	COUNTY:	ALBANY	MAP PREPARED BY: PAUL E. HITE LICENSED LAND SURVEYOR 230 DELAWARE AVENUE DELMAR, NEW YORK 12054 (518) 439-4989
	STATE:	NEW YORK	
	SCALE:	1" = 40'	
	DATE:	MAY 20, 1998	
	DRAWN BY:	JACD	
	MAP NO.:	365E	