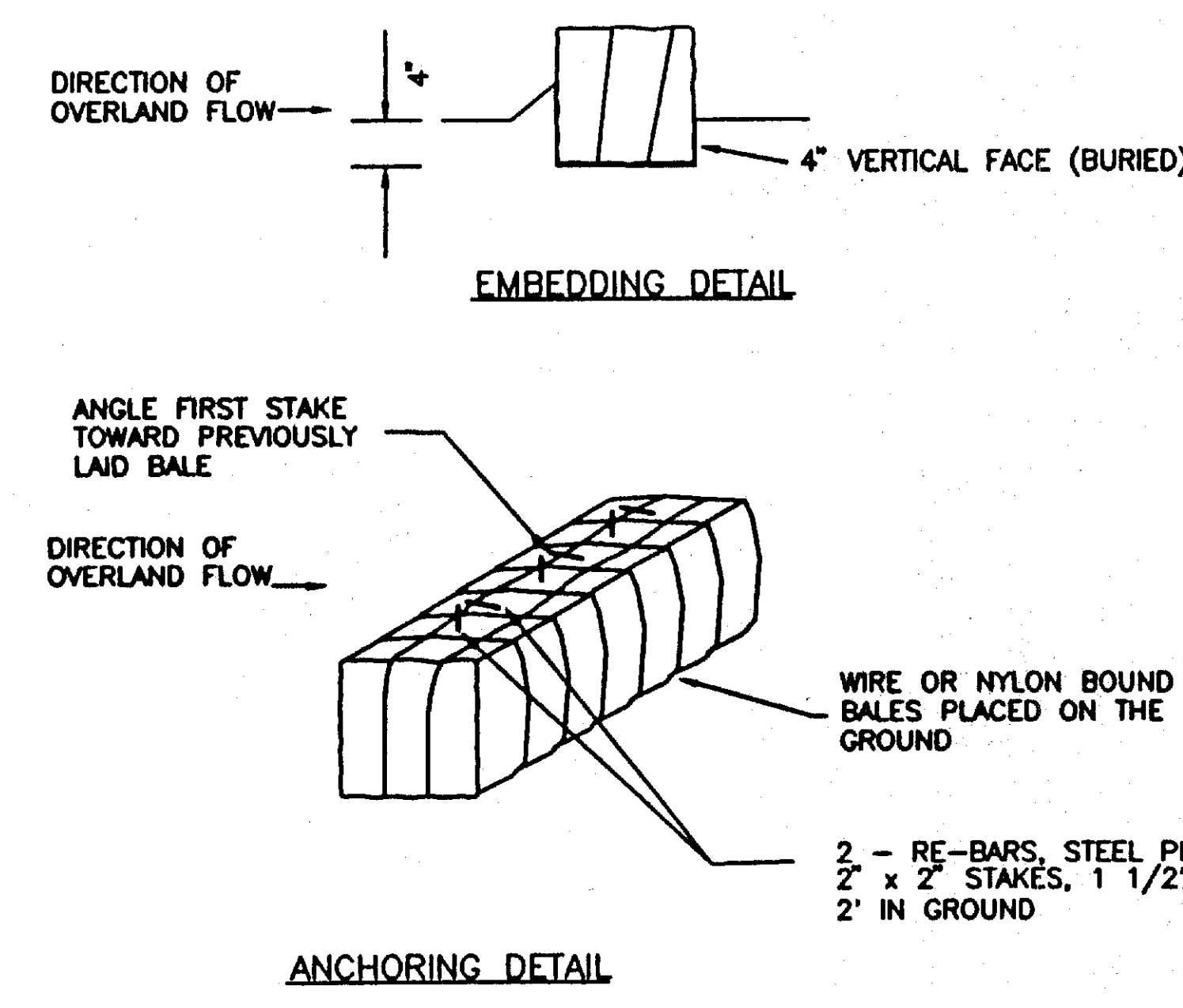
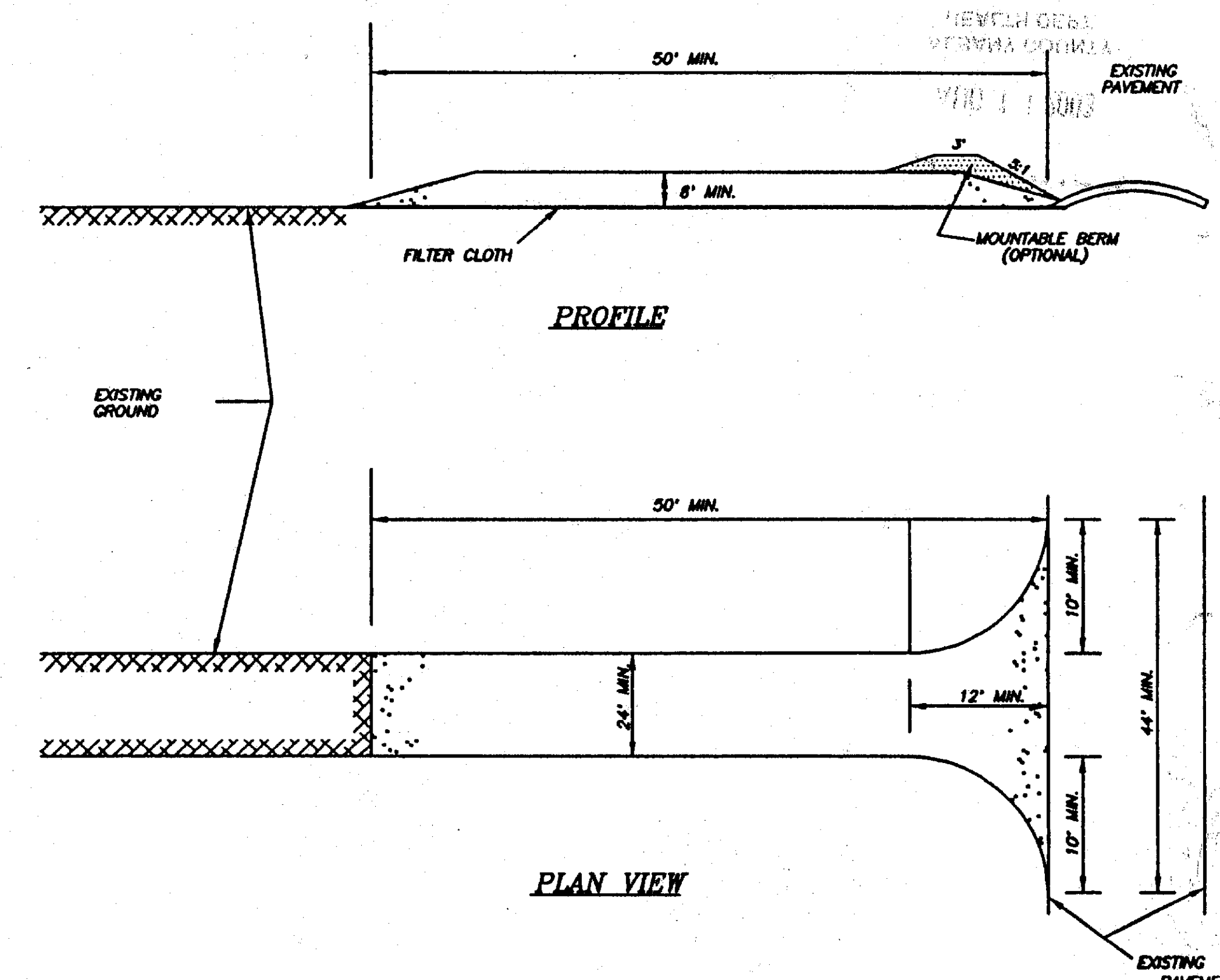
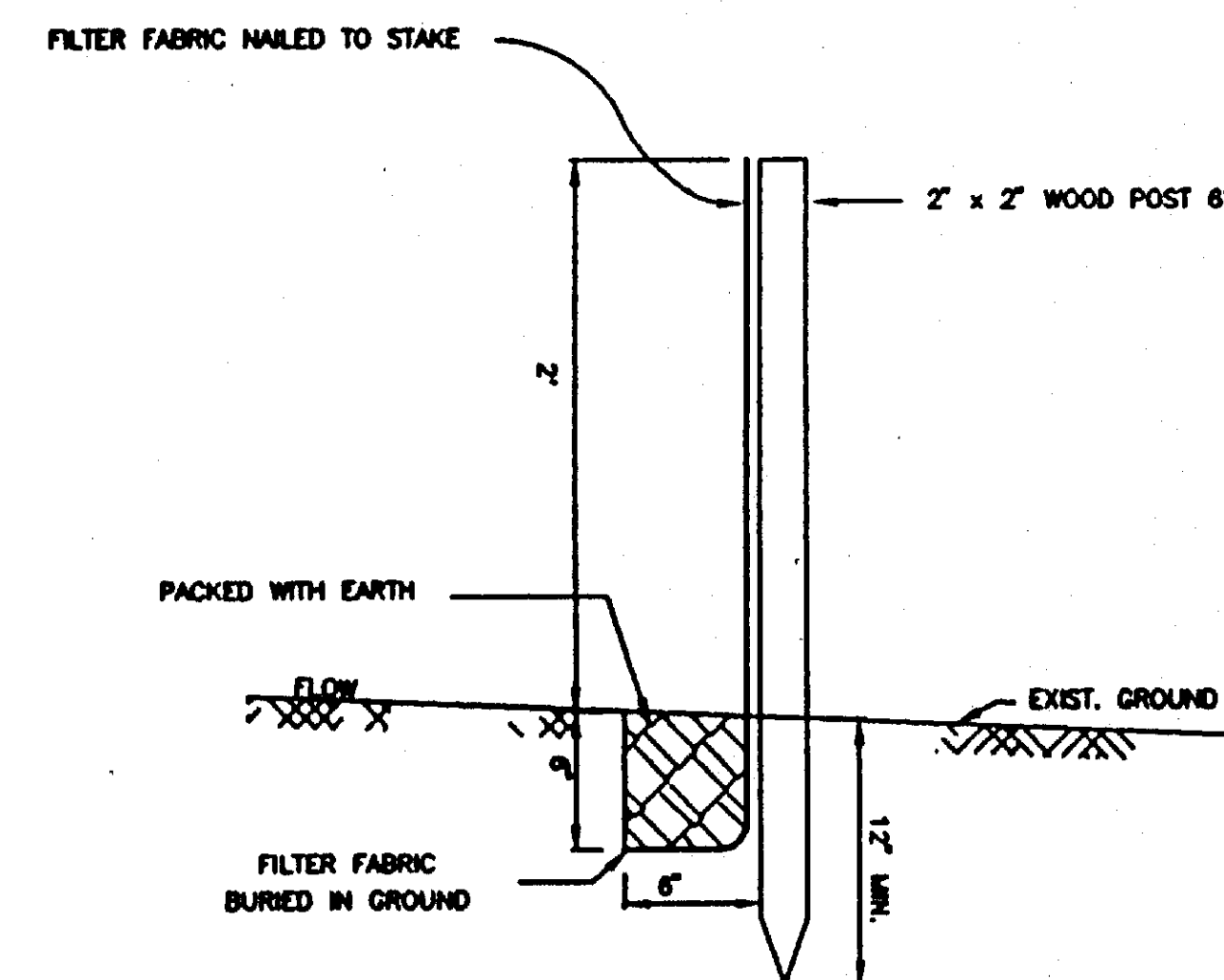
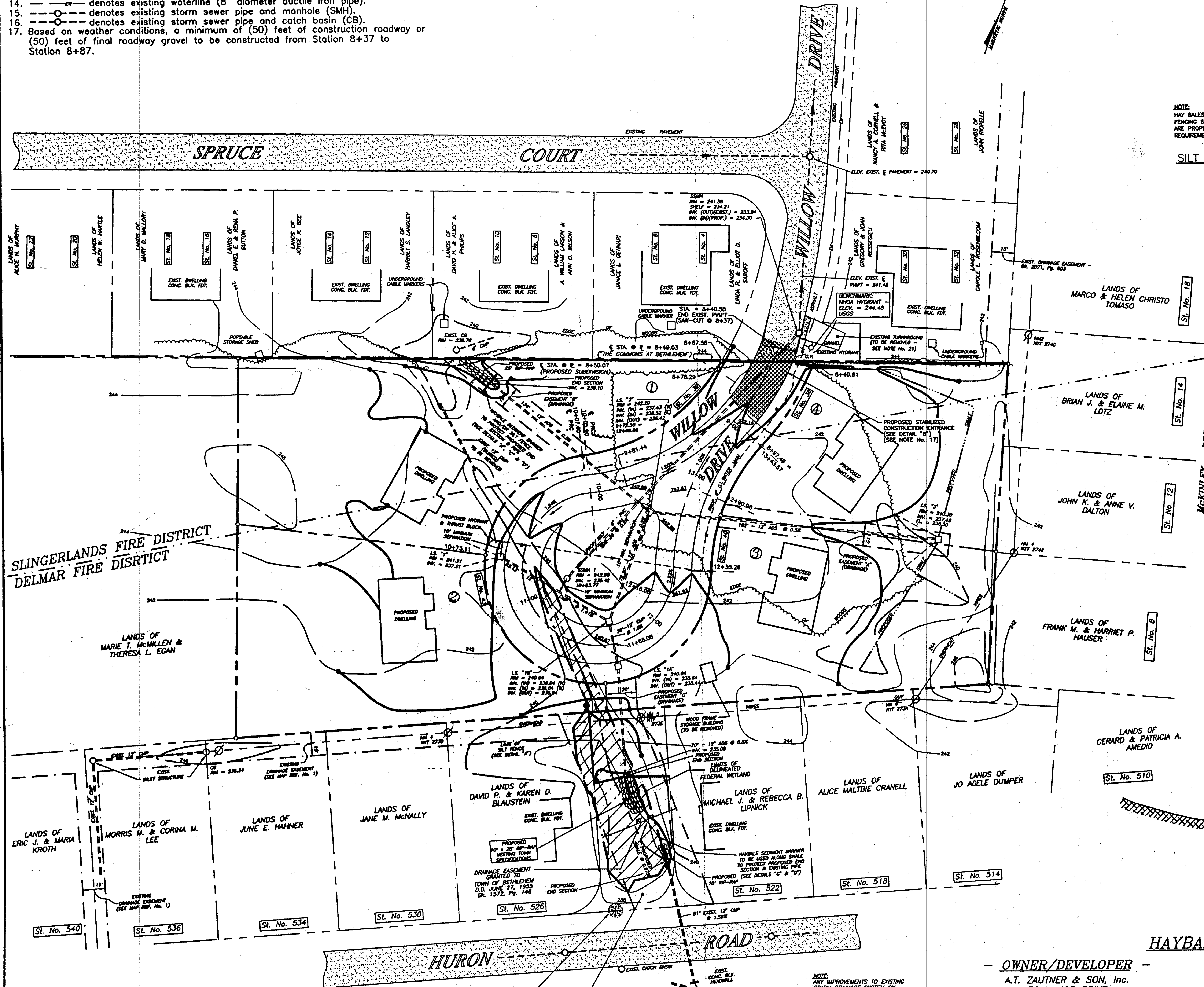


# DEVELOPMENT NOTES:

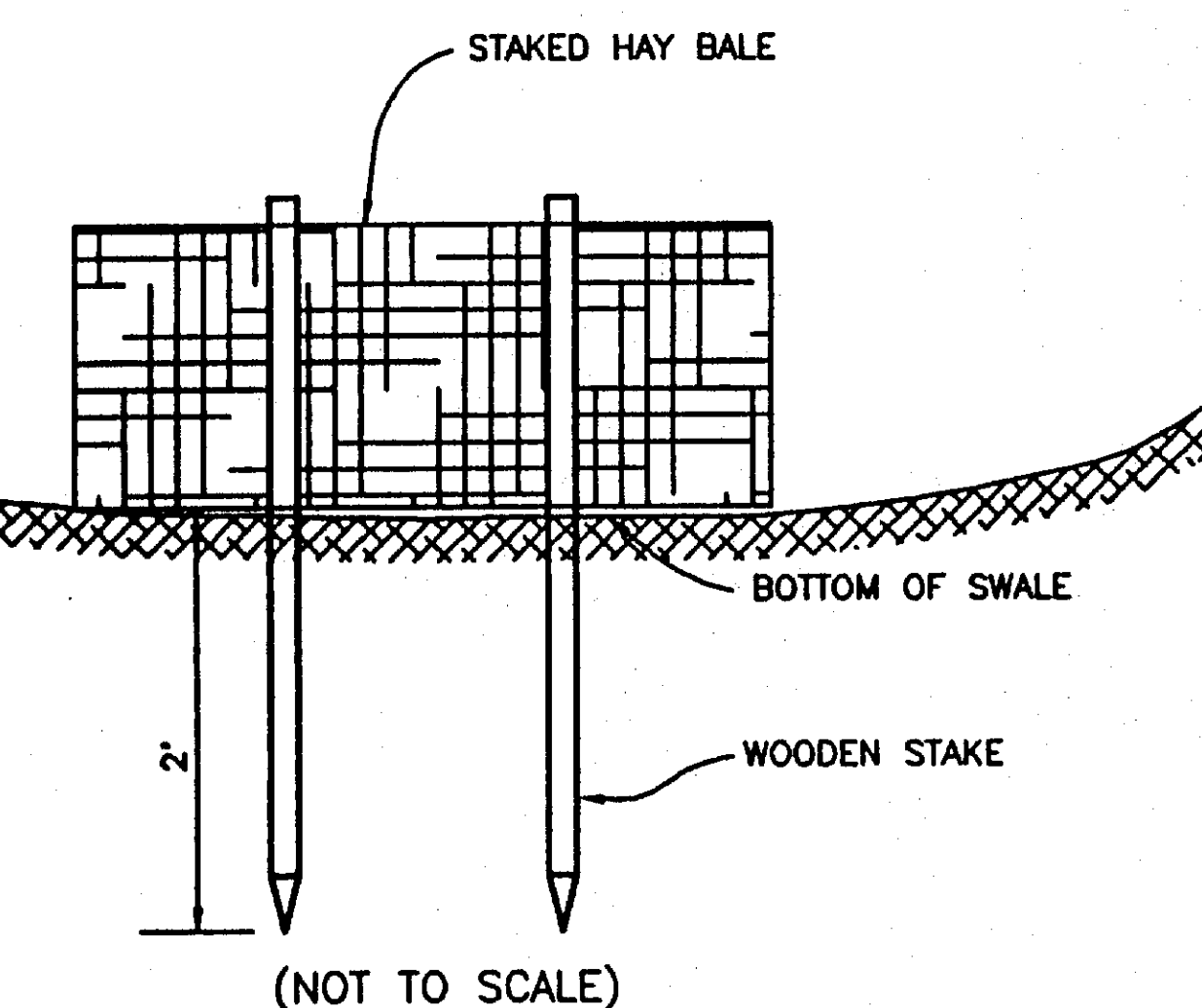
1. All elevations shown are on U.S.G.S. elevation base, contour interval (2) Ft.
2. --- denotes existing contour.
3. --- denotes proposed grading contour.
4. x 202.5 denotes proposed elevation.
5. x 204.7 denotes existing elevation.
6. Proposed waterline shown hereon to be 8" diameter Ductile Iron Cement Lined Pipe.
7. --- denotes proposed storm sewer pipe and manhole (SMH).
8. --- denotes proposed storm sewer pipe and catch basin (IS).
9. --- denotes proposed waterline (see Note No. 6).
10. --- denotes proposed sanitary sewer pipe and manhole (SSMH).
11. --- denotes proposed hydrant.
12. --- denotes proposed gate valve.
13. --- denotes existing sanitary sewer pipe and manhole (SSMH).
14. --- denotes existing waterline (8" diameter ductile iron pipe).
15. --- denotes existing storm sewer pipe and manhole (SMH).
16. --- denotes existing storm sewer pipe and catch basin (CB).
17. Based on weather conditions, a minimum of (50) feet of construction roadway or (50) feet of final roadway gravel to be constructed from Station 8+37 to Station 8+87.

# MAP REFERENCES:

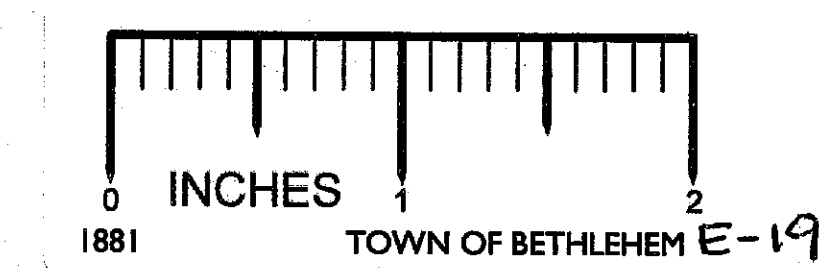
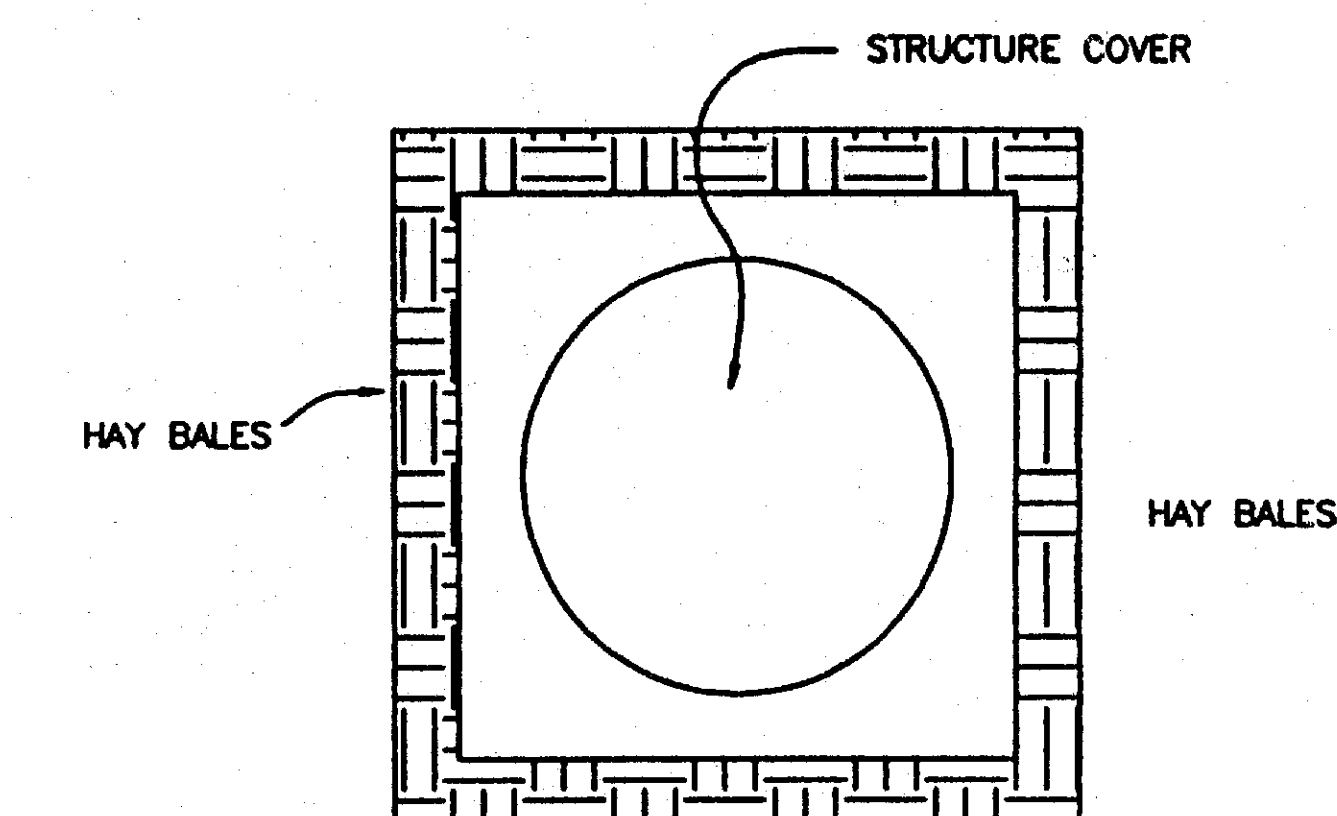
1. "Map of Portion of 'Kenware', Section #1, Property of Charles Buchman" dated March 23, 1955, revised to August 18, 1958, by Edward W. Boutelle & Son, Engineers and Surveyors, as filed in the Albany County Clerk's Office on September 2, 1958, in drawer 159, as map no. 3650.
2. "Map of a Portion of 'Kenware', Section #2, Property of Charles Buchman", dated February 18, 1957, revised to September 29, 1958, by Edward W. Boutelle & Son, Civil Engineers and Surveyors, as filed in the Albany County Clerk's Office.
3. "Map of 'Kilmerland' Property of Buchman Land Corp." dated February 27, 1963, by Edward W. Boutelle and Son, Civil Engineers and Surveyors, as filed in the Albany County Clerk's Office on May 24, 1963, in drawer 162, as map no. 4024.
4. "The Commons at Bethlehem" dated August 23, 1971, by Edward W. Boutelle & Son, Engineers and Surveyors, as filed in the Albany County Clerk's Office in drawer 166.



**HAYBALE SEDIMENT BARRIER DETAIL**  
**DETAIL "C"**



**HAYBALE EROSION CONTROL DETAIL**  
**DETAIL "D"**



**FINAL PLAT - EROSION & SEDIMENT CONTROL PLAN**  
**PROPOSED SUBDIVISION**  
**"WILLOW ESTATES"**  
**PROPERTY OF**  
**A. T. ZAUTNER & SON, Inc.**  
**TOWN OF BETHLEHEM**

COUNTY:	ALBANY
STATE:	NEW YORK
SCALE:	1" = 40'
DATE:	JANUARY 16, 2003
DRAWN BY:	JXD
MAP NO.:	474

**MAP PREPARED BY:**  
**PAUL E. HITE**  
LICENSED LAND SURVEYOR  
230 DELAWARE AVENUE  
DELMAR, NEW YORK 12054  
(518) 439-4989

REVISED: AUGUST 5, 2003 - REVISIONS PER TOWN ENGINEERING DEPT. REVIEW COMMENTS DATED JULY 28, 2003 & ALBANY COUNTY HEALTH DEPARTMENT REVIEW COMMENTS  
REVISED: JULY 16, 2003 - SEDIMENT CONTROL ADDED TO DRAINAGE EASEMENT "B"  
REVISED: JUNE 16, 2003 - REVISIONS PER TOWN ENGINEERING DEPT. REVIEW COMMENTS DATED APRIL 3, 2003 & CONDITIONAL FINAL PLAT APPROVAL No. 220-CF DATED MAY 6, 2003  
REVISED: MARCH 1, 2003 - REVISIONS PER TOWN ENGINEERING & PLANNING DEPT. REVIEW COMMENTS, DATED FEBRUARY 12, 2003, SHEET No. 6 ADDED

