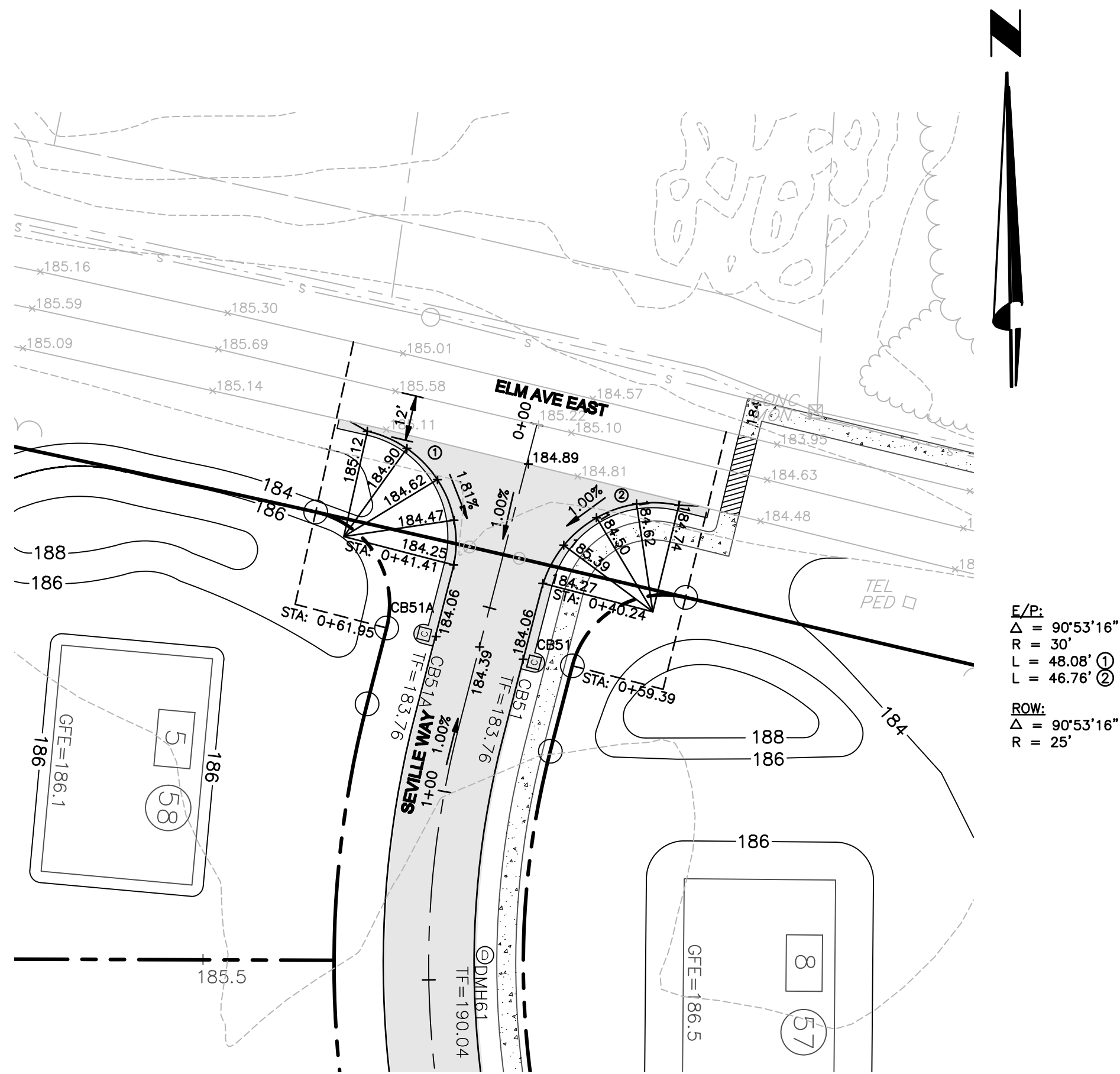
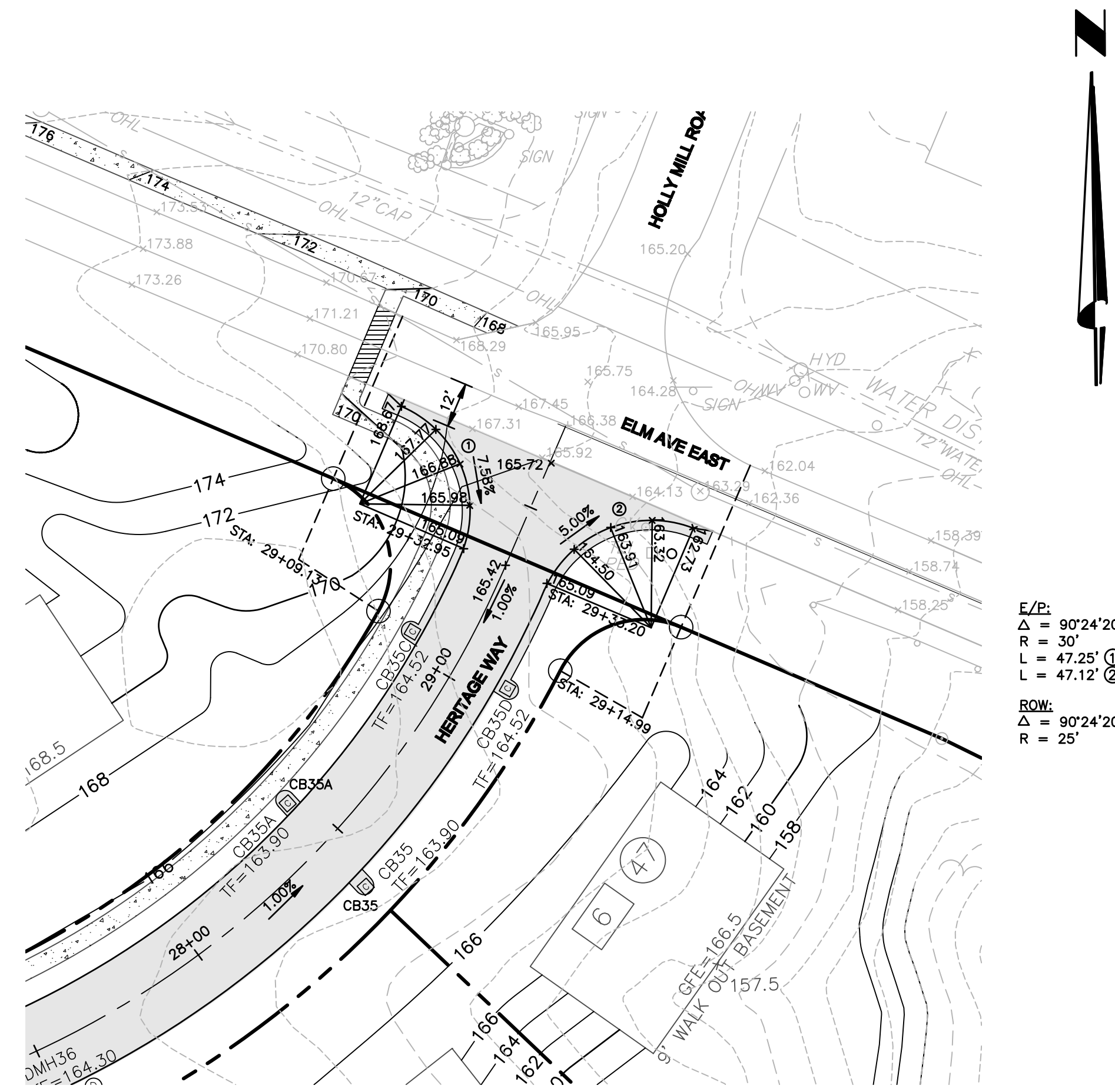


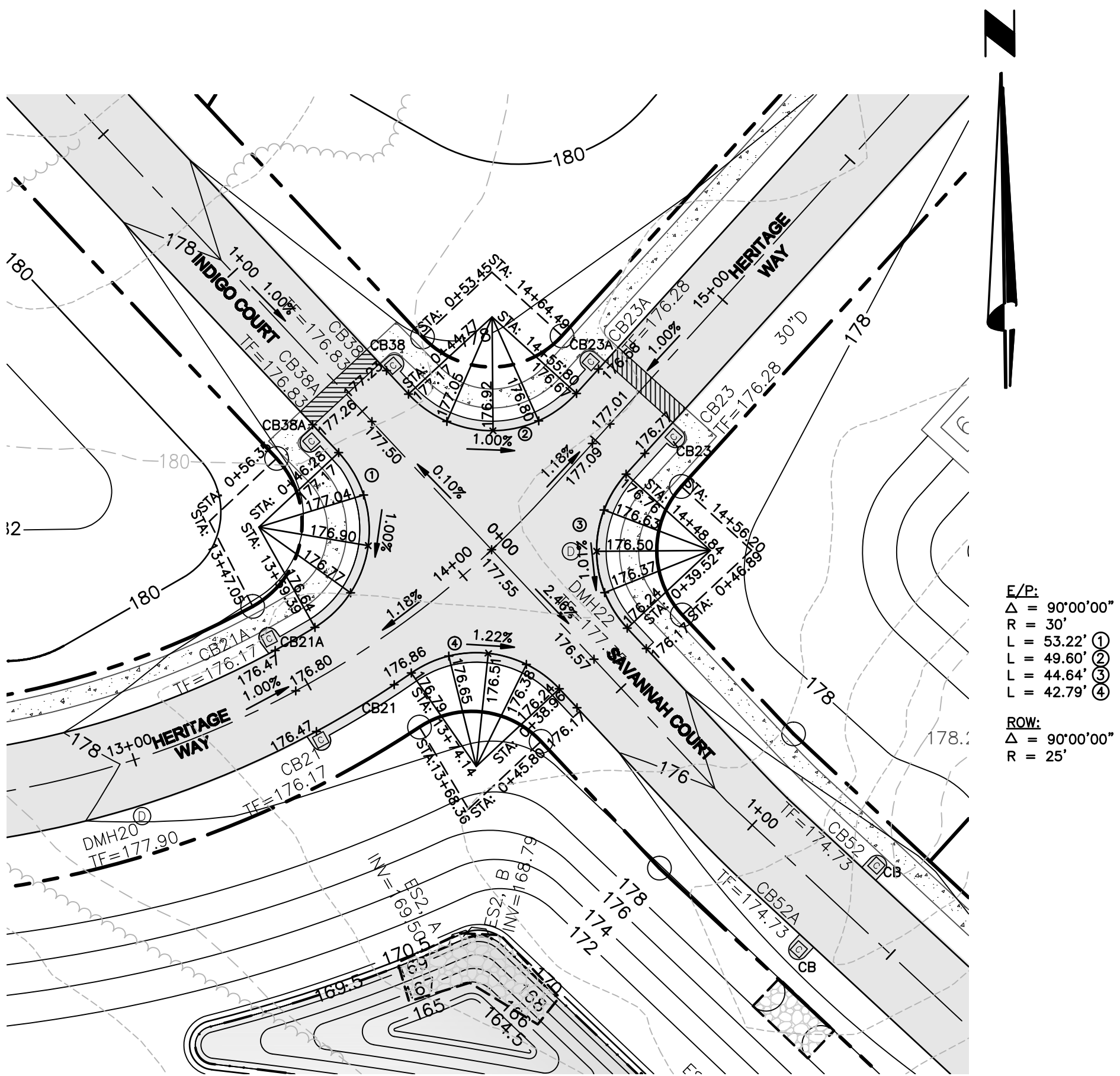
**INTERSECTION DETAIL**  
**ELM AVE EAST & HERITAGE WAY (WEST)**  
 SCALE: 1"=30'



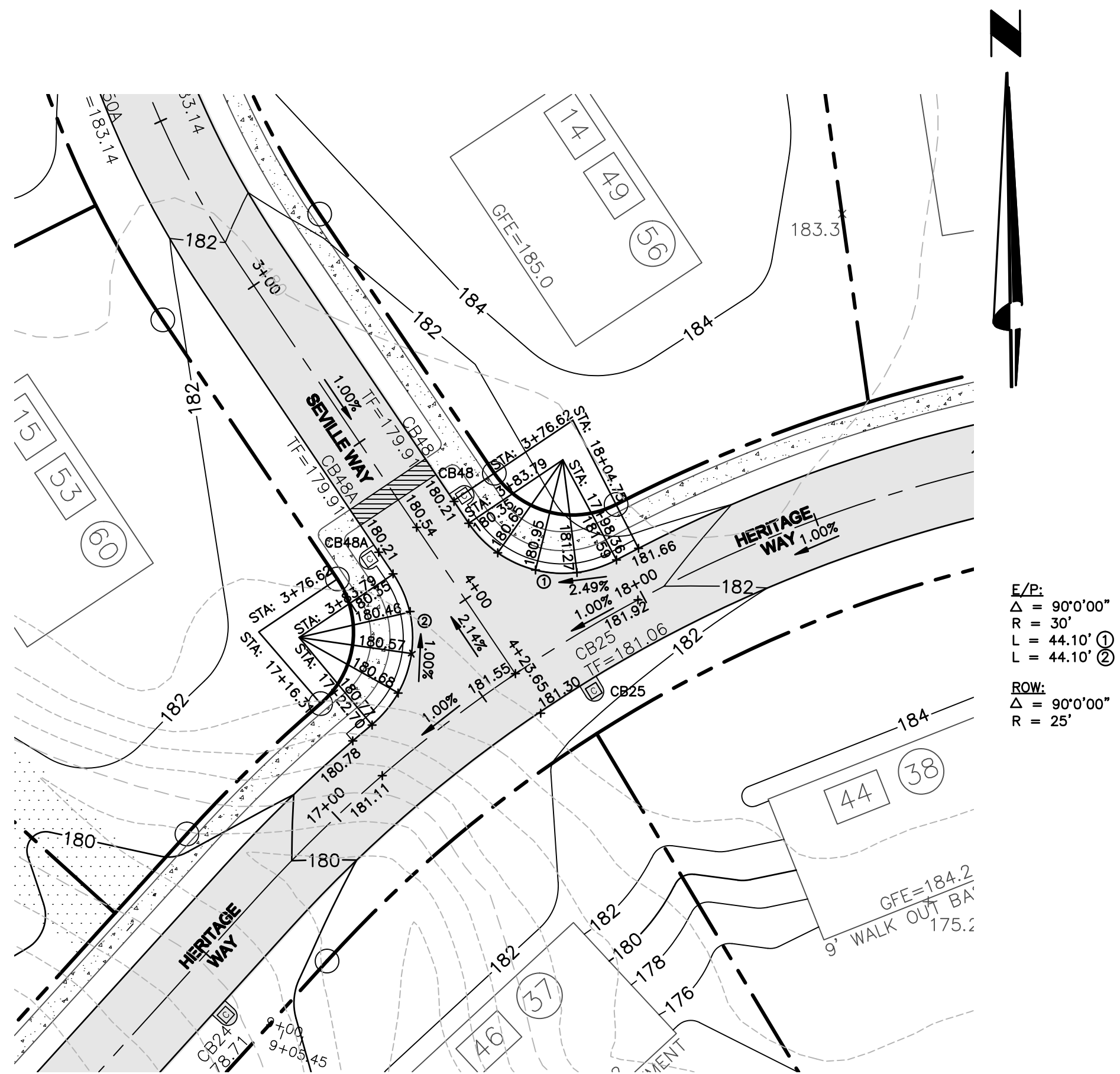
**INTERSECTION DETAIL**  
**ELM AVE EAST & SEVILLE WAY**  
 SCALE: 1"=30'



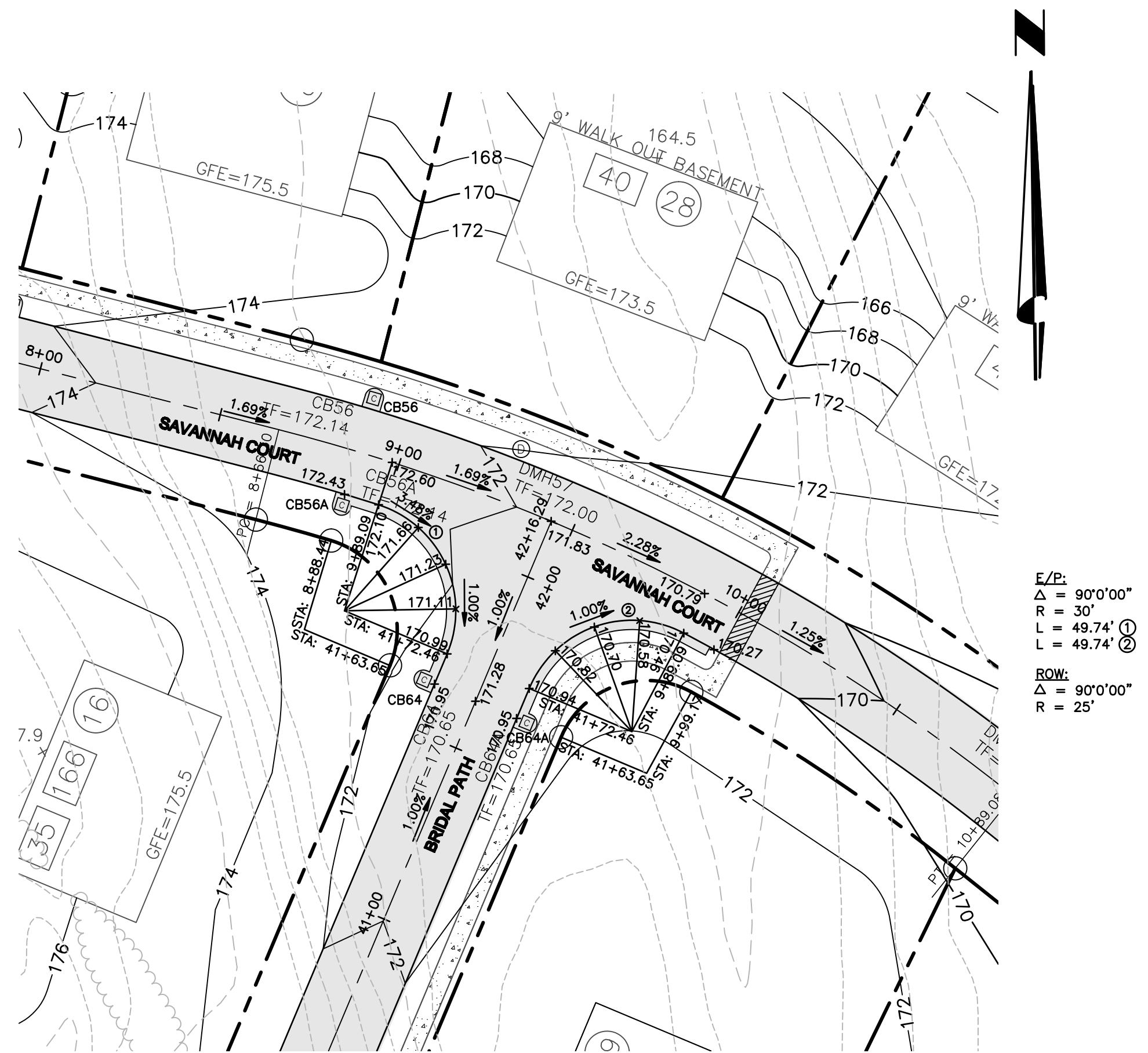
**INTERSECTION DETAIL**  
**ELM AVE EAST & HERITAGE WAY (EAST)**  
 SCALE: 1"=30'



**INTERSECTION DETAIL**  
**HERITAGE WAY, INDIGO COURT & SAVANNAH COURT**  
 SCALE: 1"=30'



**INTERSECTION DETAIL**  
**HERITAGE WAY & SEVILLE WAY**  
 SCALE: 1"=30'



**INTERSECTION DETAIL**  
**SAVANNAH COURT & BRIDAL PATH**  
 SCALE: 1"=30'

**APPLICANT:**  
 AMORE HOMES  
 1900 WESTERN AVENUE  
 ALBANY, NY 12203  
 PH: (518) 456-1010  
 FAX: (518) 456-1999

ALL RIGHTS RESERVED. COPY OR REPRODUCTION OF THIS PLAN OR ANY PORTION THEREOF IS PROHIBITED WITHOUT THE WRITTEN PERMISSION OF THE DESIGN ENGINEER, SURVEYOR, OR ARCHITECT. ALTERATION OF THIS DRAWING, EXCEPT BY A LICENSED P.E. IS ILLEGAL. ANY ALTERATION BY A P.E. MUST BE INDICATED AND BEAR HIS SEAL, SIGNATURE, AND DATE OF ALTERATION.

**THE**  
**Chazen**  
**COMPANIES**  
 Engineers/Surveyors  
 Planners  
 Environmental Scientists

**CHAZEN ENGINEERING & LAND SURVEYING CO., P.C.**

**Albany County Office:** 21 Fox Street, Troy, New York 12181, Phone: (518) 456-3980  
**Capital District Office:** 547 River Street, Troy, New York 12180, Phone: (518) 273-0555  
**Orange County Office:** 356 Meadow Avenue, Newburgh, New York 12550, Phone: (845) 567-1133  
**North Country Office:** 100 Dan Street, Oneida, New York 13621, Phone: (518) 812-0513

REV.	DATE	DESCRIPTION
8	9/16/08	REVISED PER TOWN DIVISION OF ENGINEERING COMMENTS
7	8/7/08	REVISED PER TOWN DIVISION OF ENGINEERING COMMENTS
6	6/13/08	REVISED PER TOWN 5/13/08 COMMENTS
5	02/26/08	GENERAL REVISIONS PER TOWN AND ACOE COMMENTS
4	9/27/07	REVISED PER TOWN 5/23/07 COMMENTS
3	2/20/07	INTERSECTION REVISION
2	9/15/06	REVISED PER TOWN 07/12/06 COMMENTS
1	3/4/05	REVISED PER TOWN COMMENTS

**ELM AVENUE EAST RESIDENTIAL DEVELOPMENT**

**INTERSECTION DETAILS**

**TOWN OF BETHLEHEM, ALBANY COUNTY, NEW YORK**

drawn: CJB checked: JML  
 date: 12/19/03 scale: AS NOTED  
 project no.: 30337.00  
 sheet no.: **S6**