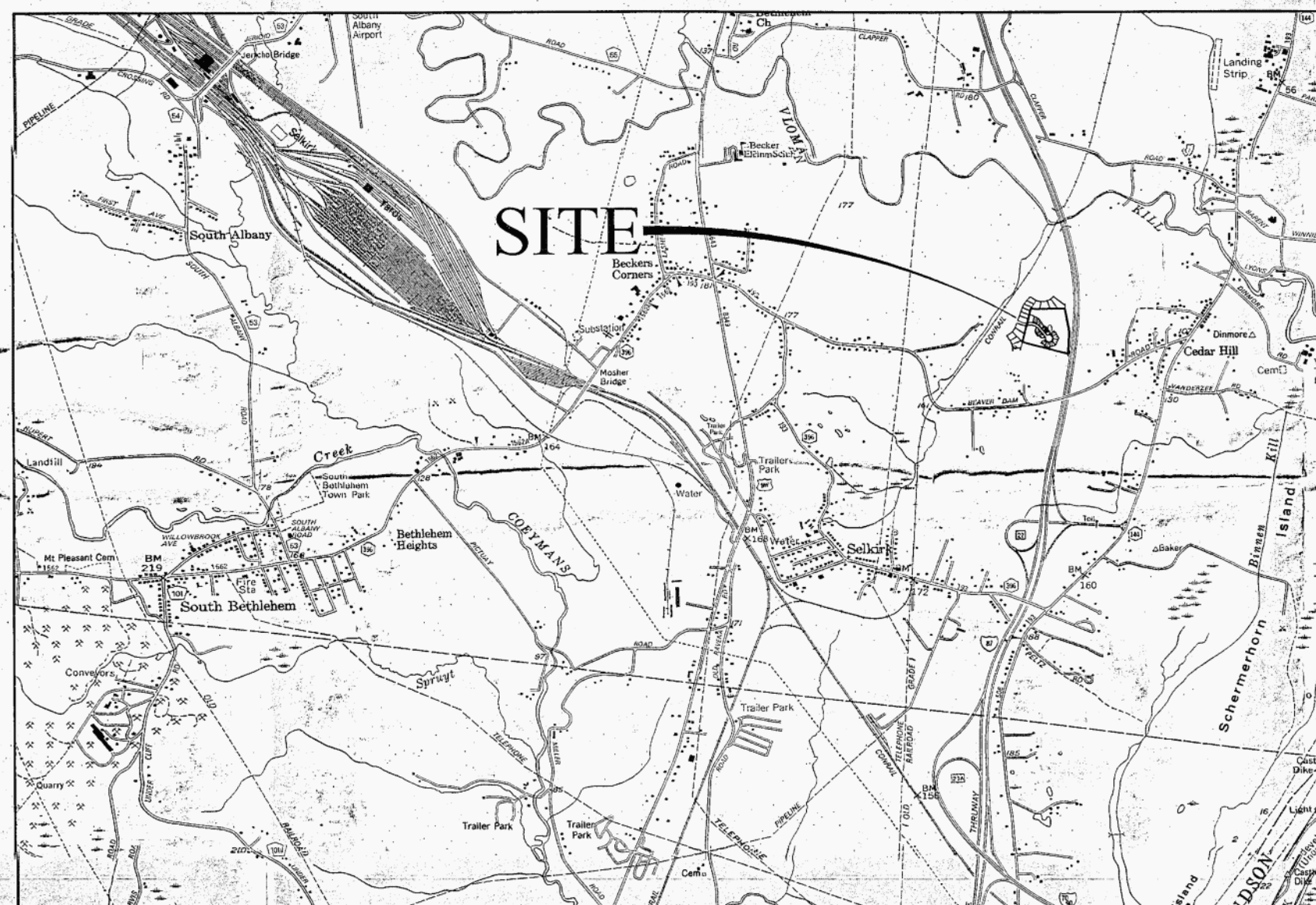


TRINITY MANOR SUBDIVISION PHASE 5 - RESUBDIVISION 1

REUTTER DRIVE * TOWN OF BETHLEHEM
ALBANY COUNTY * NEW YORK



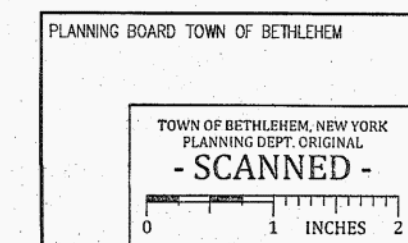
SHEET INDEX:

SHEET 1	COVER
SHEET 2	EXISTING CONDITIONS
SHEET 3	SUBDIVISION PLAN
SHEET 4	GRADING PLAN
SHEET 5	PLAN/PROFILE REUTTER DR.
SHEET 6	EROSION CONTROL PLAN
SHEET 7	PLANTING PLAN
SHEET 8	DETAILS

OWNER/APPLICANT/DEVELOPER
ROSEWOOD HOME BUILDERS, LLC
1202 TROY SCHENECTADY ROAD
LATHAM, N.Y. 12110

FINAL ENGINEERING DRAWINGS
DECEMBER 2013
REVISED JULY 2014

Albany County Clerk
Document Number 11783442
Revised 02/20/2015 6:38:07 AM



Town of Bethlehem Planning Board
By direction of the Chairman
these plans are hereby approved.
See sheet for date & signature.

ALBANY COUNTY DEPT. OF HEALTH

ALBANY COUNTY DEPARTMENT OF HEALTH
DIVISION OF ENVIRONMENTAL HEALTH SERVICES
By direction of the Commissioner of Health, these
plans are hereby approved. See sheet for
date and signature.

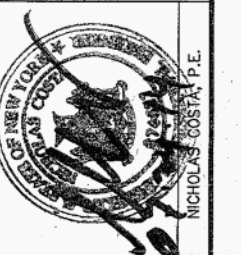
FILE

SUR

NO.	REVISION	BY	APPD.	DATE
1	ISSUED FOR REVIEW	JPP	NC	12/16/13
2	REVISED PER TOWN COMMENTS DATED 2/11/14	JPP	NC	3/2/14
3	REVISED PER TOWN COMMENTS DATED 5/6/14	JPP	NC	5/24/14
4	REVISED PER TOWN COMMENTS DATED 6/13/14	JPP	NC	7/24/14

NO.	REVISION	BY	APPD.	DATE
1	ISSUED FOR REVIEW	JPP	NC	12/16/13
2	REVISED PER TOWN COMMENTS DATED 2/11/14	JPP	NC	3/2/14
3	REVISED PER TOWN COMMENTS DATED 5/6/14	JPP	NC	5/24/14
4	REVISED PER TOWN COMMENTS DATED 6/13/14	JPP	NC	7/24/14

DESIGNED BY: ADVANCE ENGINEERING & SURVEYING, PLLC
CONSULTING IN -
CIVIL & ENVIRONMENTAL ENGINEERING
LAND SURVEYING & DEVELOPMENT
COMMERCIAL AND RESIDENTIAL
11 HERBERT DRIVE, LATHAM, N.Y. 12110
PHONE: (518) 688-3772



Design of:
ADVANCE ENGINEERING & SURVEYING, PLLC
CONSULTING IN -
CIVIL & ENVIRONMENTAL ENGINEERING
LAND SURVEYING & DEVELOPMENT
COMMERCIAL AND RESIDENTIAL
11 HERBERT DRIVE, LATHAM, N.Y. 12110
PHONE: (518) 688-3772



TRINITY MANOR SUBDIVISION
PHASE 5 - RESUBDIVISION 1
FINAL PLAT-COVER SHEET
TOWN OF BETHLEHEM
COUNTY OF ALBANY
DATE: NOVEMBER, 2013
SCALE: NONE
SHEET 1 OF 8

SHEET NO.
COVER
1 OF 8

Certificate 261 CF 08/19/2014