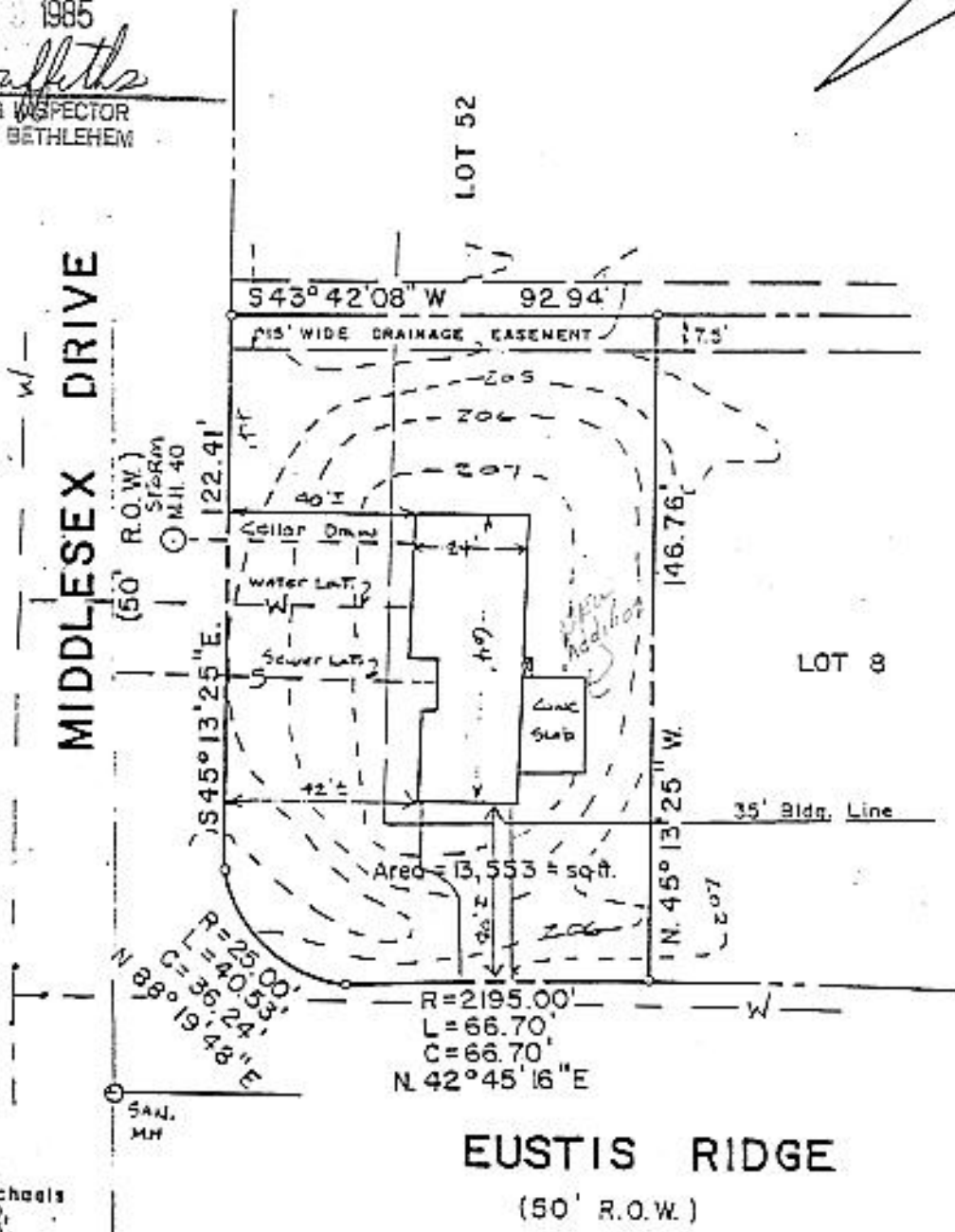
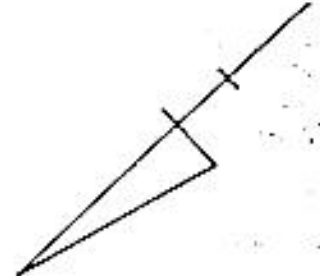


APPROVED


11 1985

Roger Griffiths
 BUILDING INSPECTOR
 TOWN OF BETHLEHEM



MAP REFERENCE:

"Map of Lyndhurst" to be developed by Rosen-Michaels Inc. dated August 3, 1980, revised January 5, 1983, made by Paul E. Hite, retitled in Albany Co. Clerk's Office on January 10, 1983 in Drawer No. 172 as Map No. 5925.

DATE	DESCRIPTION	APPR.	LOT 52 - MIDDLESEX DRIVE LYNDHURST	
4.1.84	PROPOSED PLOT PLAN & SITE GRADING	WTW	TOWN OF BETHLEHEM	COUNTY OF ALBANY
			SCALE: 1" = 40'	DATE: NOVEMBER 19, 1980
DRAWN BY: SEQ		CHECKED BY: CPM	 G. T. MALE ASSOCIATES, P. C. 1888 TROY ROAD, SCHEMENECADY, N.Y. 12389	
APPROVED BY: <i>David J. Buta</i>		LIC. NO. 49387		
PROJECT NO. 01.03.063				

DRAWING 49-131-222007