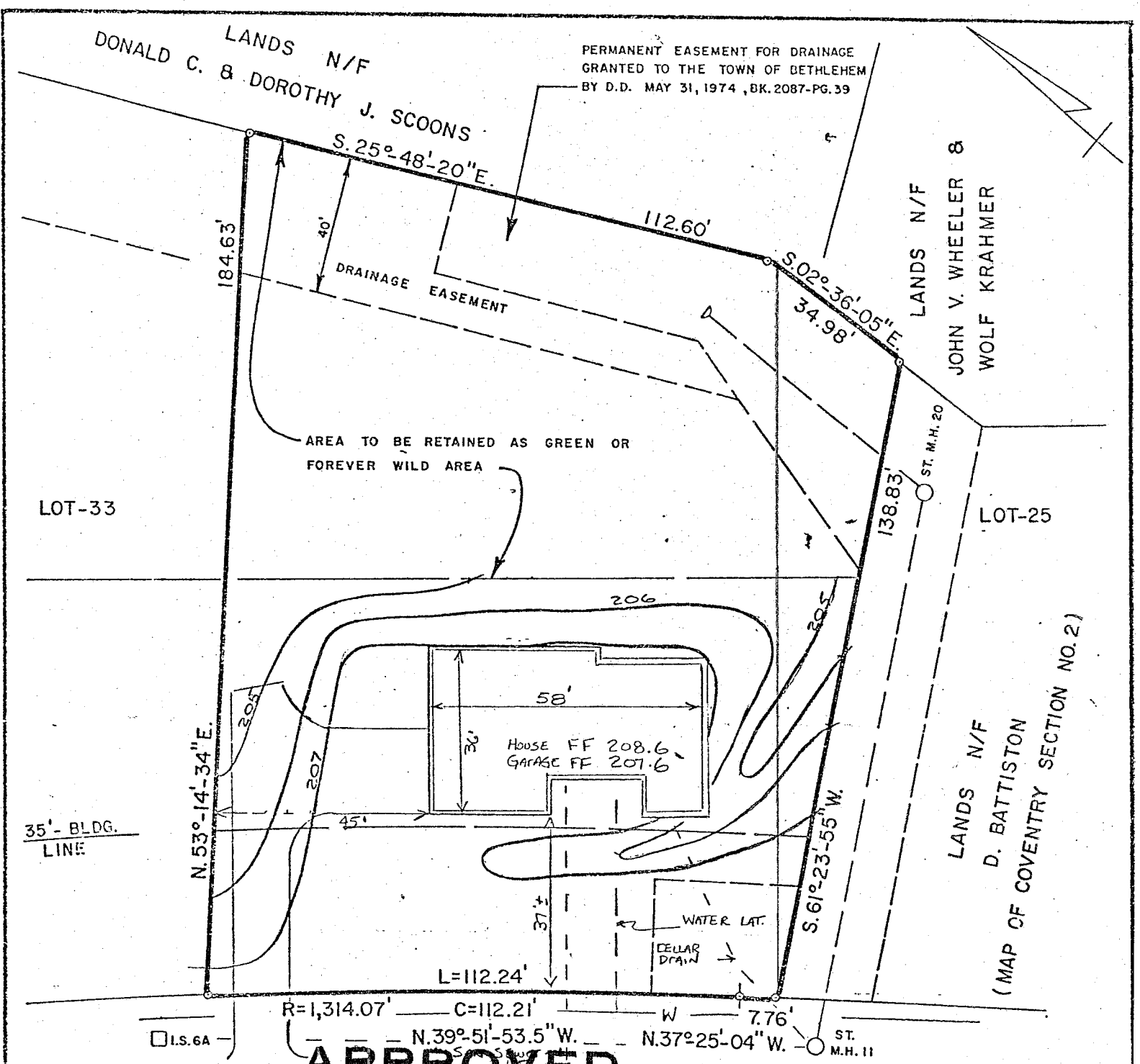


185




MAP REFERENCE:
 "Map of Lyndhurst" to be developed by Rosen-Michaels Inc. dated August 5, 1980, revised January 5, 1983, made by Paul E. Hife, refiled in Albany Co. Clerk's Office on January 10, 1983 in Drawer No. 172 as Map No. 5925.

APPROVED
MIDDLESEX DRIVE

MAR 16 1984
James J. Conwell 23,277 #

BUILDING INSPECTOR
TOWN OF BETHLEHEM

DATE	DESCRIPTION	APPR.	LOT-29 MIDDLESEX DRIVE LYNDHURST	
3-5-84	FINAL PLOT PLAN & SITE GRADING	WTN	TOWN OF BETHLEHEM	COUNTY OF ALBANY
			SCALE: 1" = 30'	DATE: FEB. 23, 1982
DRAWN BY: G.P.D. CHECKED BY: R.N.S.			 C. T. MALE ASSOCIATES, P.C. 3000 TROY ROAD, SCHENECTADY, N.Y. 12303 <small>PROFESSIONAL ENGINEERS LAND SURVEYORS LAND PLANNING CONSULTANTS</small>	
APPROVED BY: _____ LIC. NO. _____				