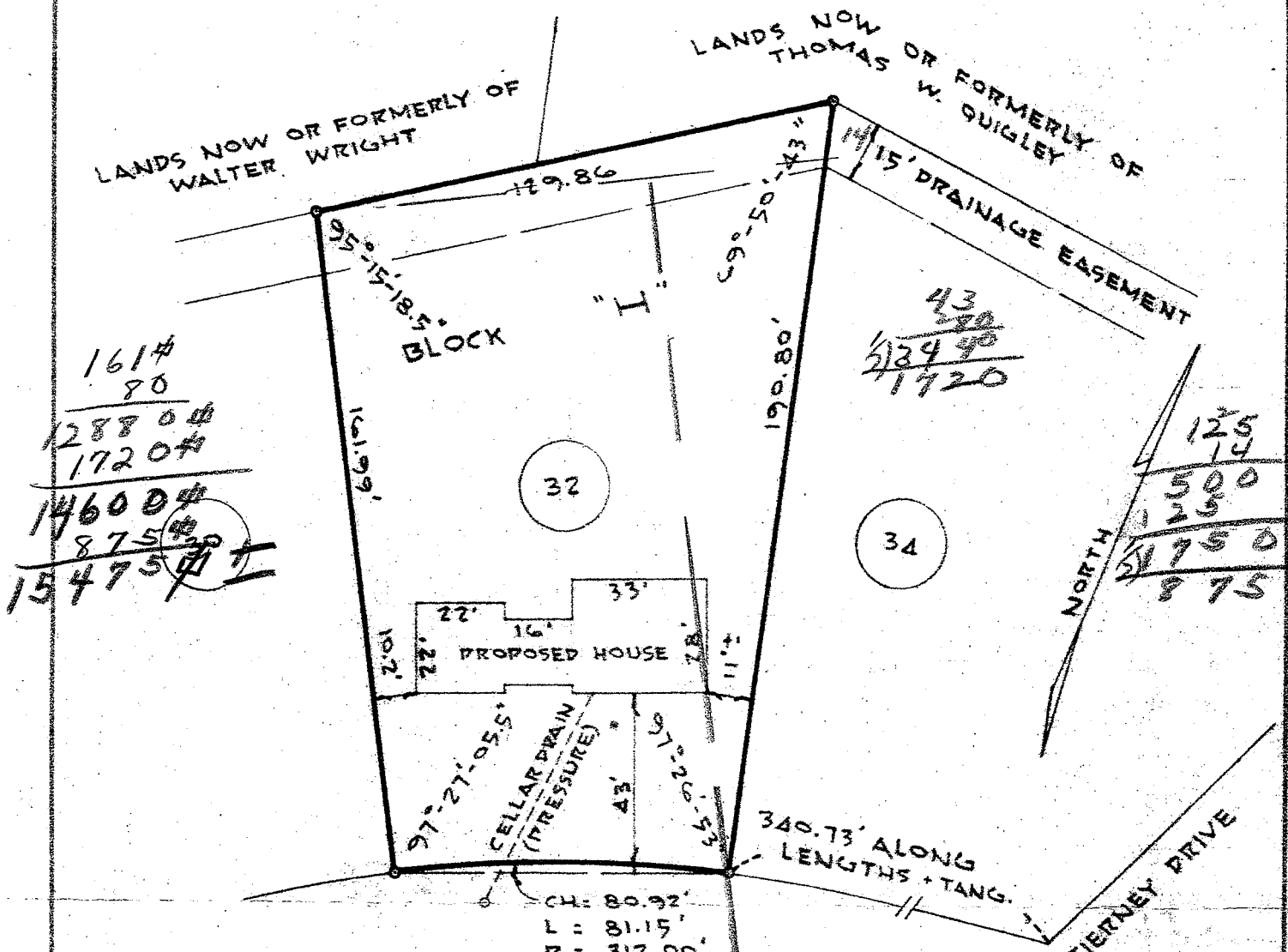


See "MAP OF BIRCHWOOD ACRES, SECTION 3, PROPERTY OF BETHLEHEM DEVELOPERS, INCORPORATED", dated February 14, 1964 and made by Edward W. Boutelle & Son, Civil Engineers and Surveyors. Filed in the office of the Albany County Clerk May 6, 1965 as Map 4179 Drawer 163.



APPROVED DR.

DATE: _____
Robert J. Collier
 Building Inspector
 Town of Bethlehem

John R. ...

COUNTY ALBANY	MAP OF PROPERTY OF WEBER BROTHERS INCORPORATED DELMAR	SCALE 1" = 40'
STATE NEW YORK		DATE May 6, 1966
ORDER NO. 66-313	EDWARD W. BOUTELLE AND SON CIVIL ENGINEERS AND SURVEYORS DELMAR, NEW YORK	REVISION