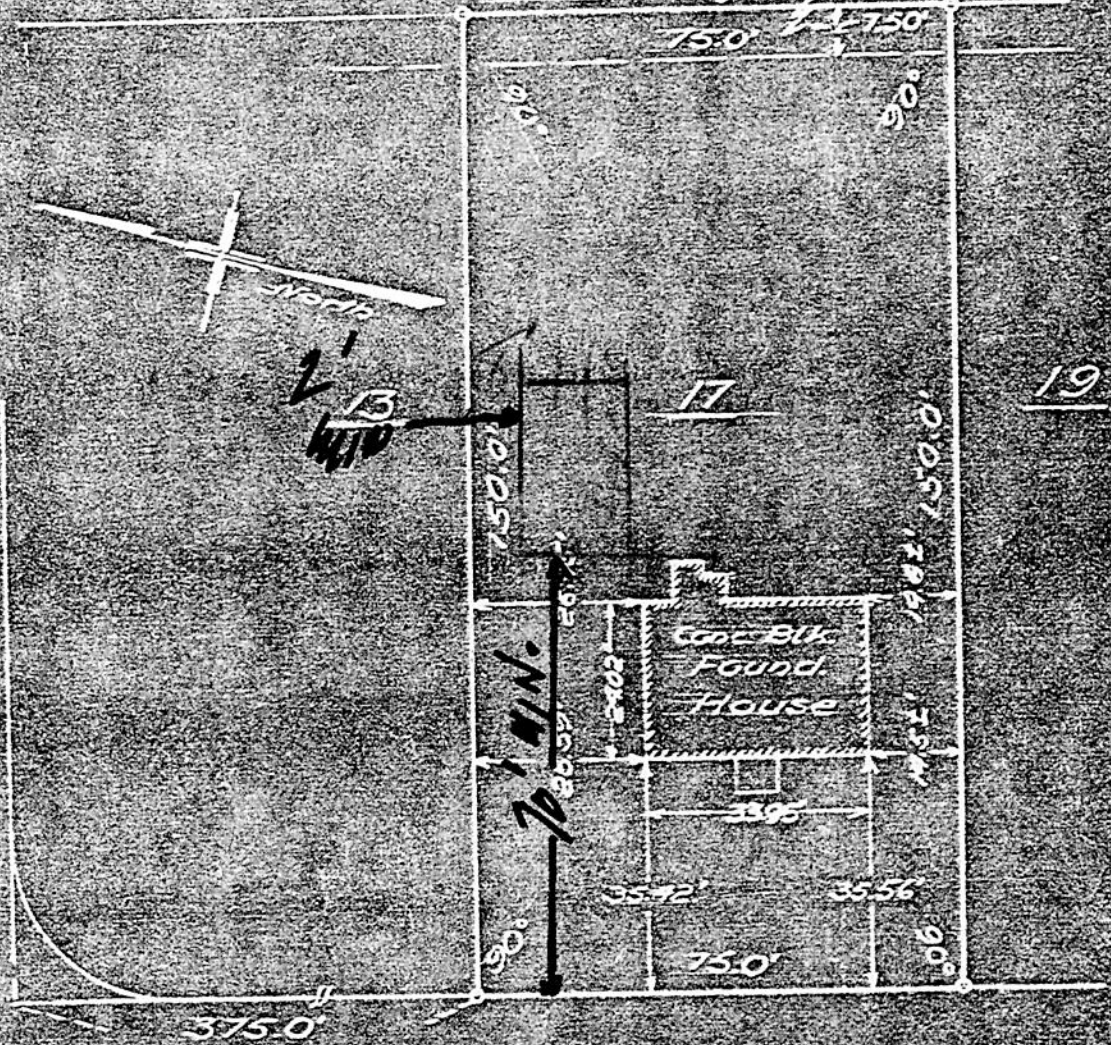


As shown on "MAP OF PORTION OF PROPERTY OF CHARLES W. BLESSING,
SECTION NO. 2", dated December 1953, revised March 1, 1954, and
made by Edward W. Bottelle & Son, Civil Engineers and Surveyors.

Lands of Blessing

Drainage Easement

ORCHARD ST



ELWOOD ROAD

MAP OF PROPERTY OF
BETTY LICHTENHAN
ELWOOD ROAD

ALBANY COUNTY
SCALE 1" = 30'

NEW YORK
OCTOBER 19, 1955

APPROVED