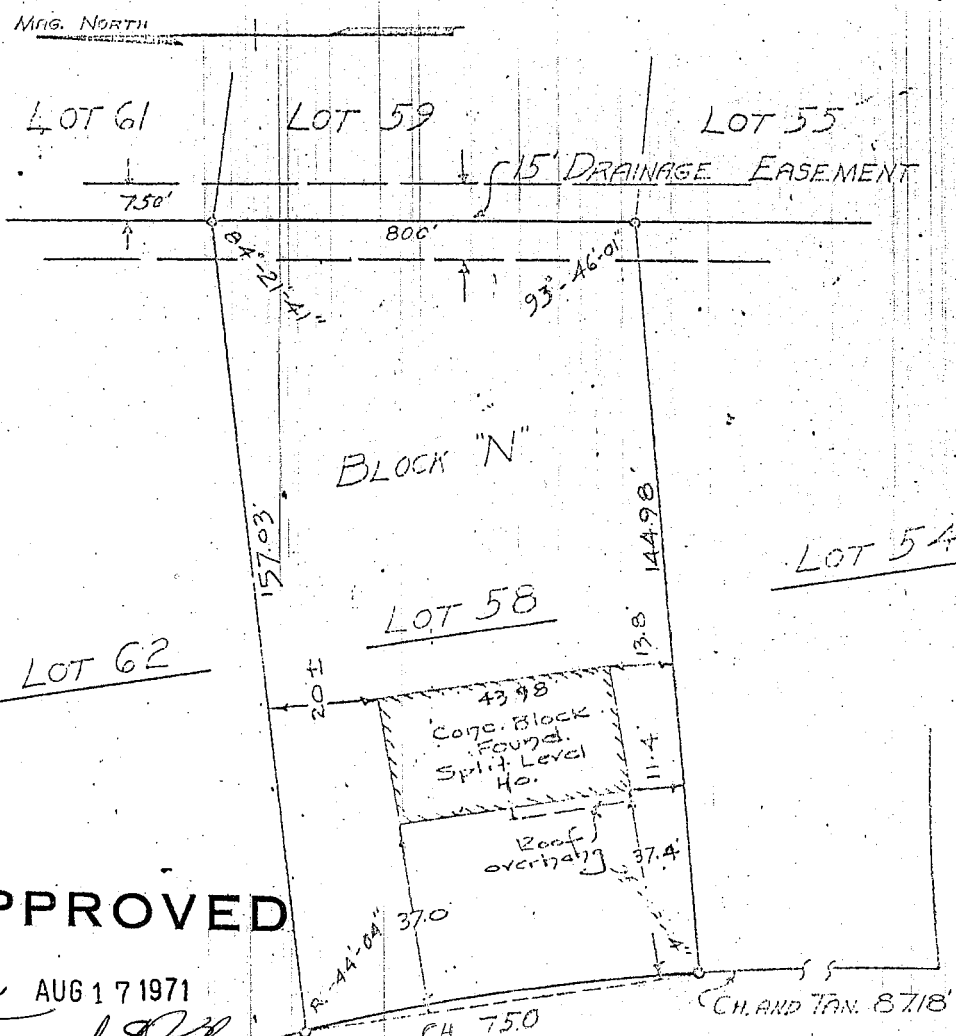


25867



STRATTON PLACE

APPROVED

AUG 17 1971

Howard E. Blumhans
 BUILDING INSPECTOR
 TOWN OF BETHLEHEM

CH. 750

CH. AND TAN. 8718'

LANSING DRIVE

DRIVE

As shown on "MAP OF PORTION OF 'KENAWARE', SECTION #2, PROPERTY OF CHARLES BUCHMAN", dated February 18, 1957, revised May 9, 1959 and made by Edward W. Boutelle and Son, Civil Engineers and Surveyors.

MAP OF PROPERTY OF
 WILLIAMS BROS.
 DELMAR

ALBANY COUNTY
 SCALE 1" = 30'

NEW YORK
 NOVEMBER 22, 1960

SURVEY AND MAP BY:

Edward W. Boutelle and Son
 Civil Engineers and Surveyors
 Delmar, N. Y.

Revised 4/13/61 - House located

1-2T-112-125-1-107

674 - 3861