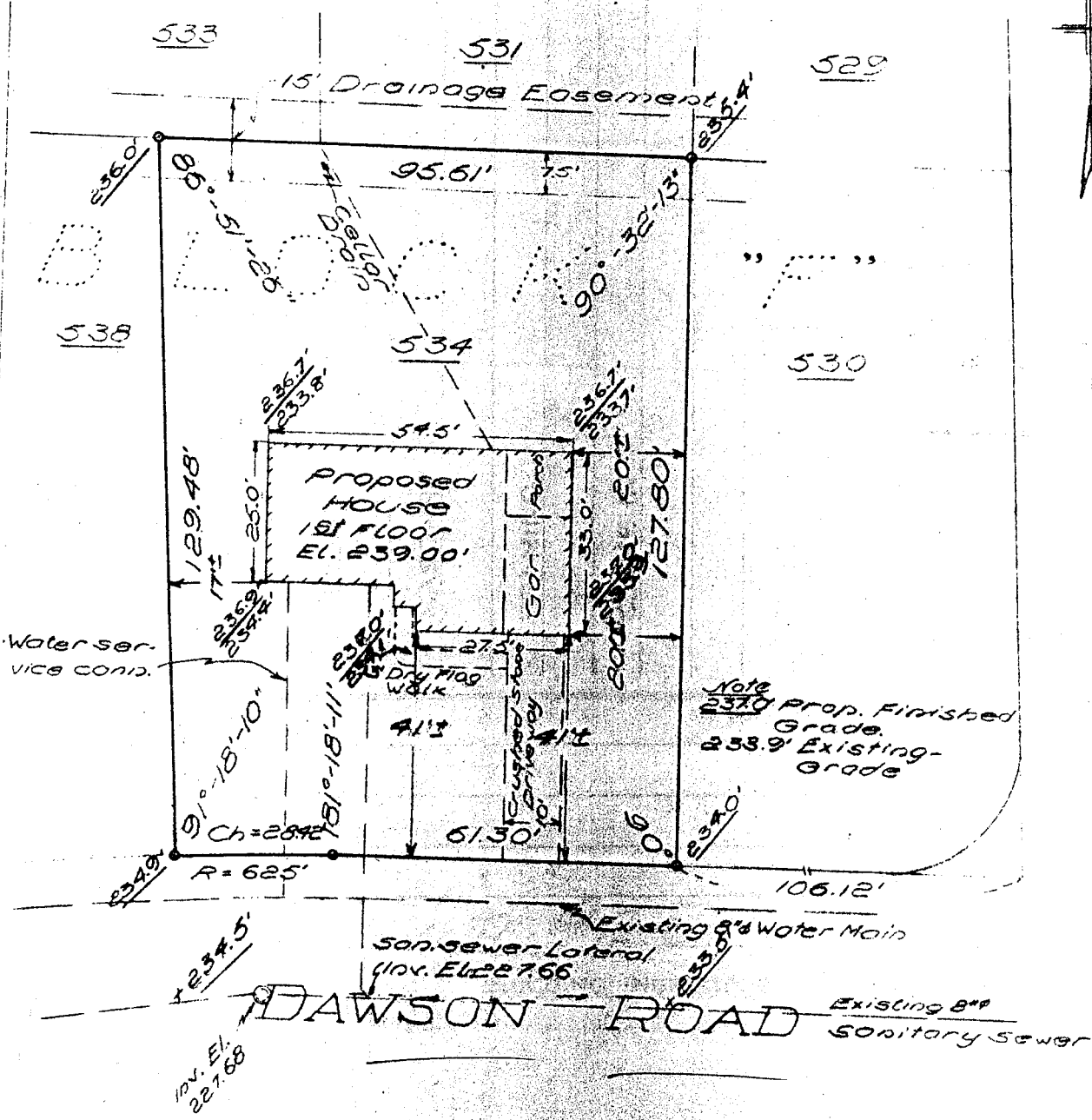


See "MAP OF PORTION OF 'KENAWARE' SECTION NO. 1 PROPERTY OF CHARLES BUCHMAN", dated March 23, 1955, revised June 7, 1955 and made by Edward W. Boutelle and Son, Civil Engineers and Surveyors.

ST. CLAIR DRIVE



MAP OF PROPERTY OF  
DOMINIC TRISCHETTA  
DELMAR

ALBANY COUNTY  
SCALE: 1" = 30'

NEW YORK  
SEPTEMBER 25, 1956

SURVEY AND MAP BY:

534 Dawson

Edward W. Boutelle & Son  
Civil Engineers and Surveyors  
Delmar, New York  
New York State License