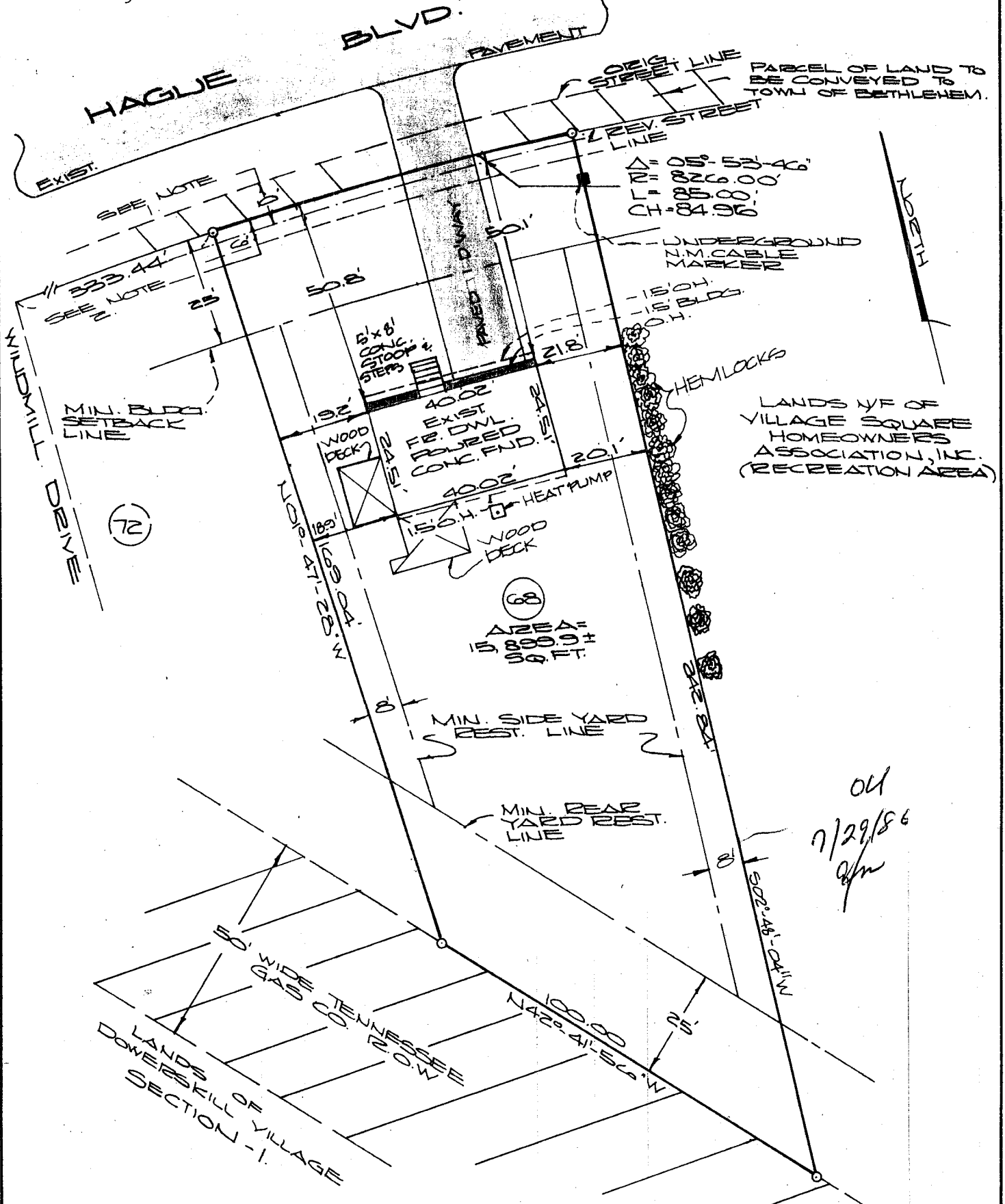


See map entitled, "PLANNED RESIDENCE DISTRICT NO. 4, SECTION 1-A, DOWERSKILL VILLAGE, JENKINS MANAGEMENT CO., INC. DEVELOPER, DEVELOPMENT PLAN 'C', dated Feb. 11, 1981, last revised August 24, 1983, filed in the Albany County Clerk's Office as Map No. 6115, D.F. No. 172 and made by Paul E. Hite, Licensed Land Surveyor.

CERTIFICATION:
 Survey shown is in accordance with the minimum standards of "CODE OF PRACTICE FOR LAND SURVEYS" as adopted by the New York State Association of Professional Land Surveyors.

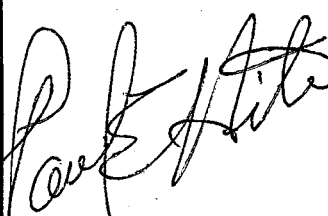
CERTIFIED TO:
 The Dime Savings Bank of New York, F.S.B.,
 Ticor Title Guarantee (Title No. 2500-45),
 James P. and Kim M. Sheldon.

- NOTES:**
- 1) See Utility Easement - Bk. 2110, Pg. 693.
 - 2) See Utility Easement - Bk. 2291, Pg. 182.
 - 3) Subject to Declaration of Covenants, Restrictions, Easements, Charges & Liens - Bk. 2127, Pg. 523.



LANDS N/E OF VILLAGE SQUARE HOMEOWNERS ASSOCIATION, INC. (RECREATION AREA)

04
 7/29/86
 PH

	County: Albany	MAP OF SURVEY LOT NUMBER 68 HAGLE BLVD. TOWN OF BETHLEHEM PAUL E. HITE Licensed Land Surveyor - Delmar, New York
	State: New York	
	Scale: 1" = 30'	
	Date: July 24, 1986	