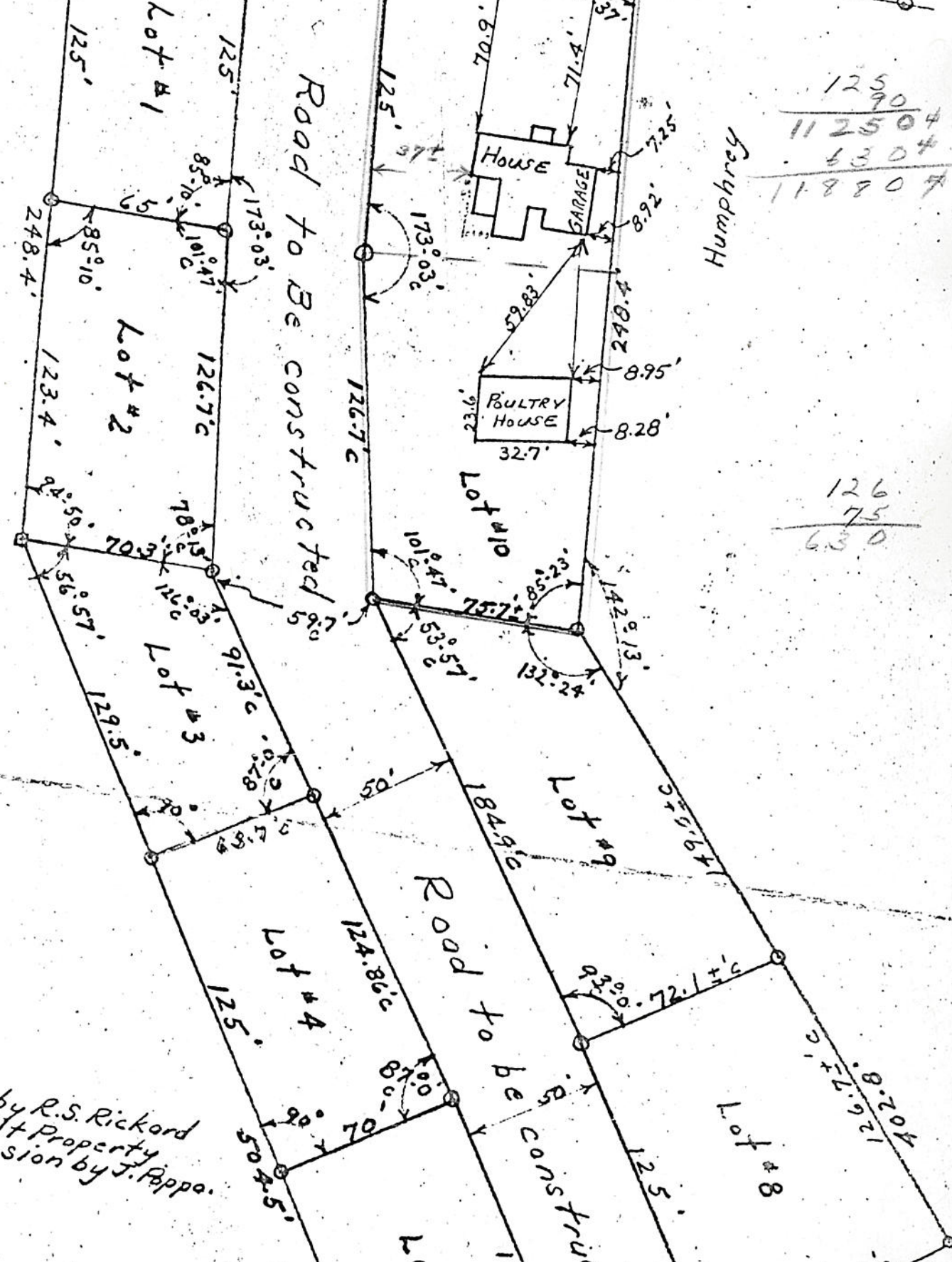


Route # 32  
 FEURA BUSH ROAD  
 205.7'



125  
 90  
 ---  
 112504  
 6304  
 ---  
 118808

126  
 75  
 ---  
 630

Humphrey

FORMERLY ELIZABETH BECKMAN

Survey made by R.S. Rickard  
 of Bradt Property  
 in possession by J. Appo.