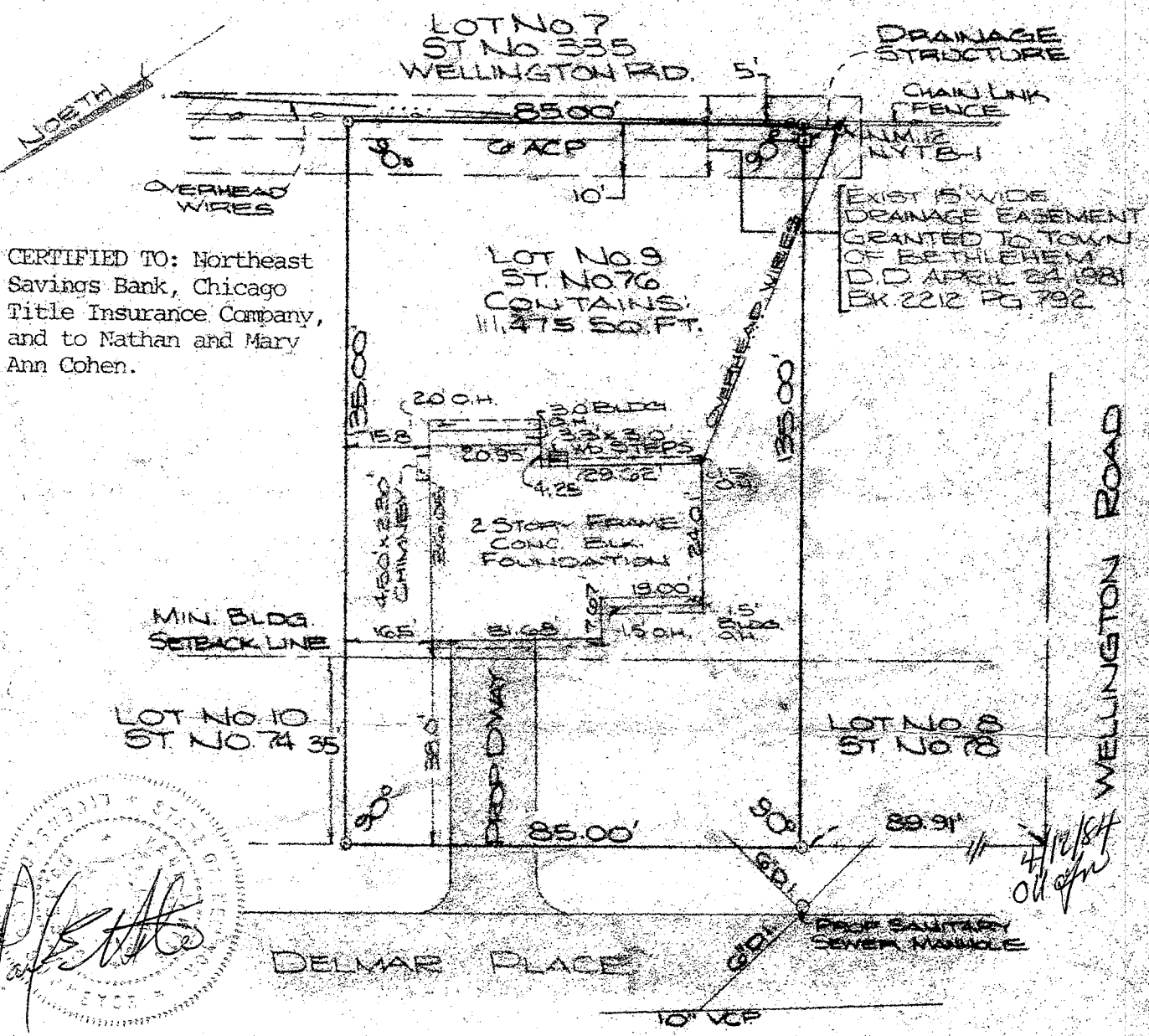


See map entitled, " FINAL SUBDIVISION PLAT, WELLINGTON ACRES", lands of Fred & Jeanne Van Hoesen, George Adams Estate - Section Three, Village of Delmar, Town of Bethlehem, Albany County, New York, made by Lewis T. Buckman II, Professional Engineer and Land Surveyor, revised by Paul E. Hite, Licensed Land Surveyor in December, 1983; filed in the Office of the Albany County Clerk on Dec. 14, 1983 as Map No. 6012 in Drawer No. 172.

CERTIFICATION: SURVEY SHOWN IS IN ACCORDANCE WITH THE MINIMUM STANDARDS OF " CODE OF PRACTICE FOR LAND SURVEYS" AS ADOPTED BY THE NEW YORK STATE ASSOCIATION OF PROFESSIONAL LAND SURVEYORS.



COUNTY ALBANY	MAP OF SURVEY LOT NUMBER 9 DELMAR PLACE TOWN OF BETHLEHEM	SCALE 1" = 30'
STATE NEW YORK		DATE APRIL 12, 1984
ORDER NO.	PAUL E. HITE LICENSED LAND SURVEYOR - DELMAR, N.Y.	REVISION