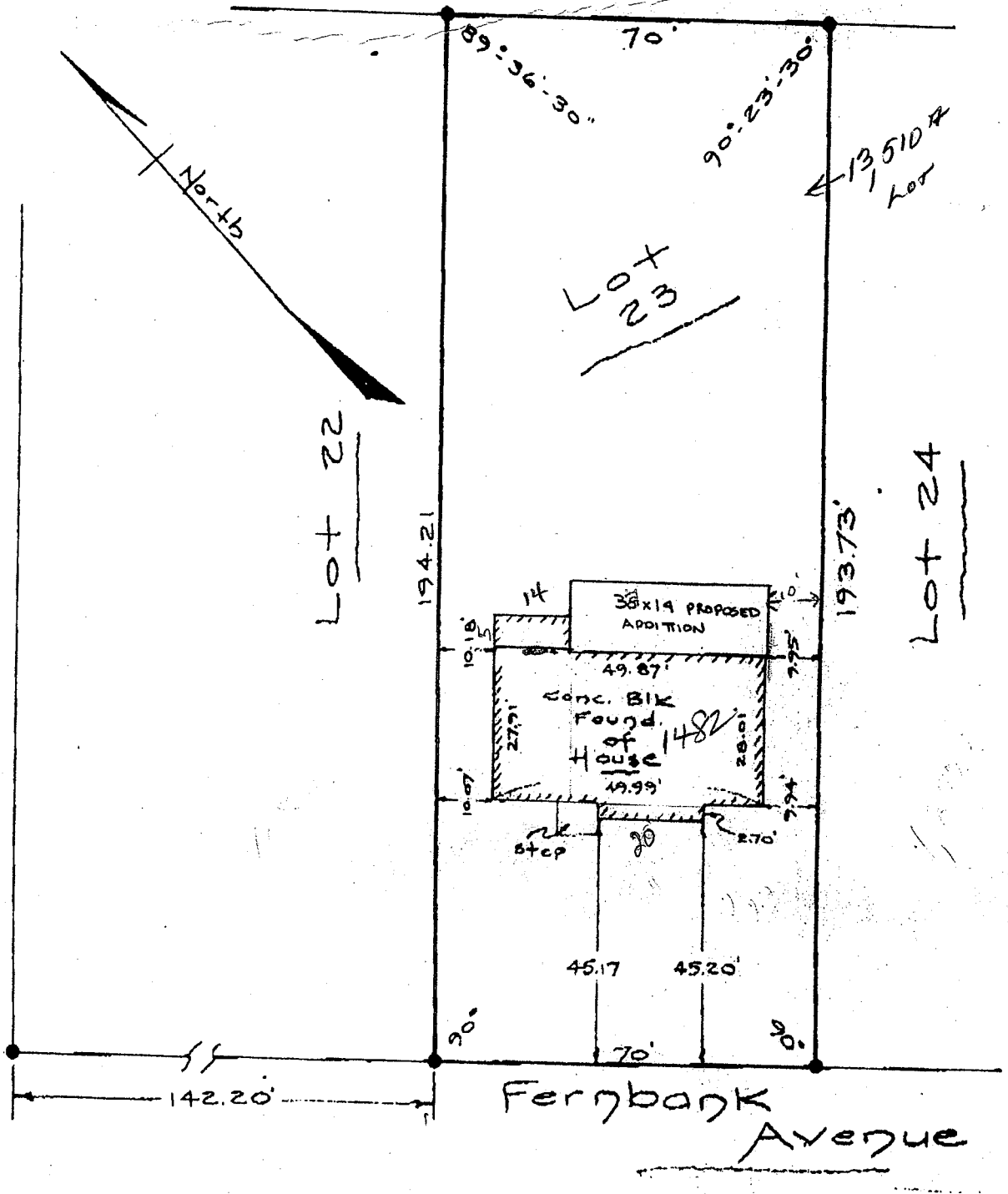


ATTN: DAN

587-2016

As shown on "MAP OF PROPERTY OF W. SCOTT PALMER," revised May, 1938, and made by John E. Quinn, P. E. & L. S.

Palmer Avenue



ALBANY COUNTY  
SCALE: 1" = 30'

COURTESY COPY  
NOT TO BE USED FOR CONVEYANCE  
APPROVED