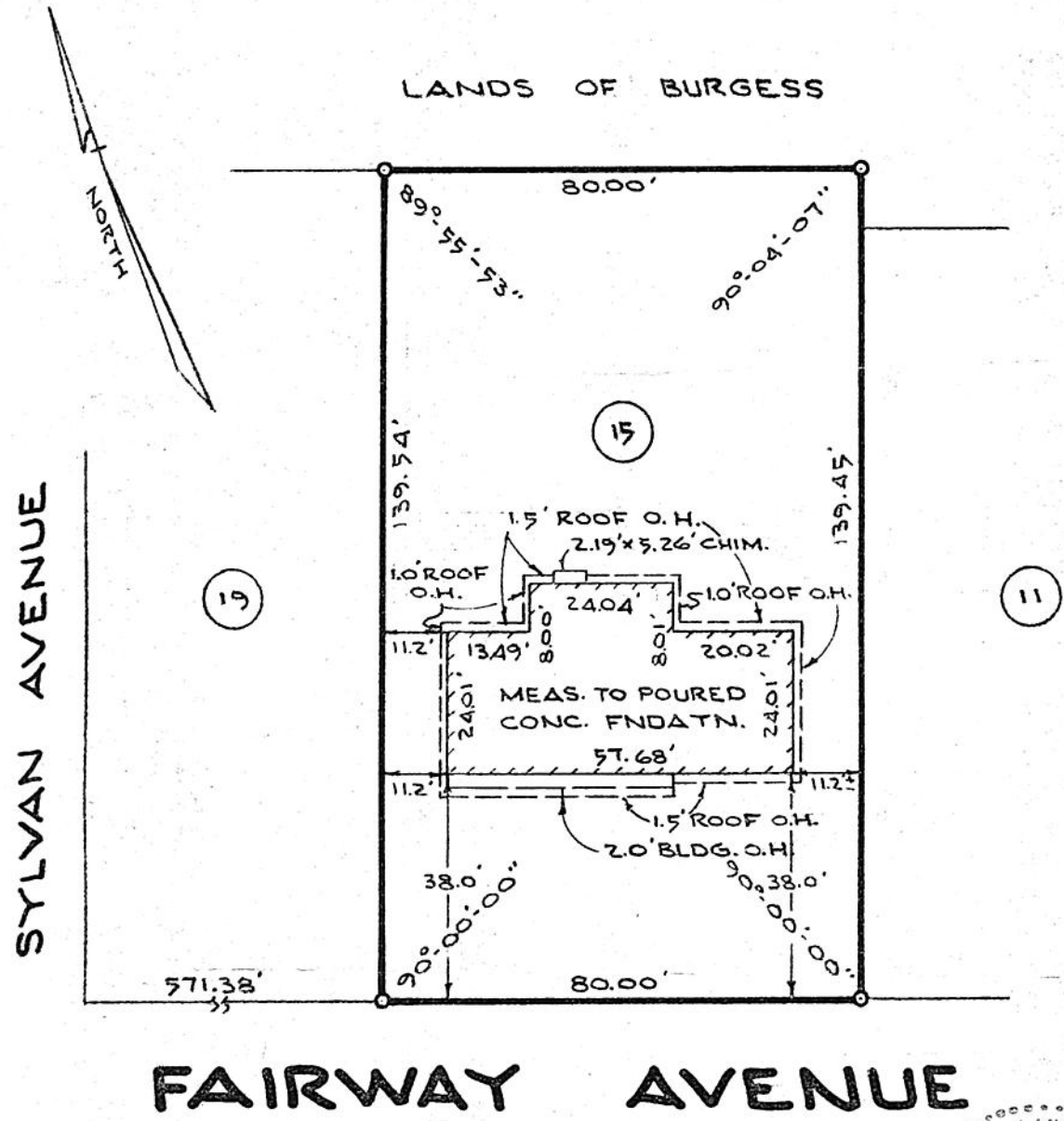
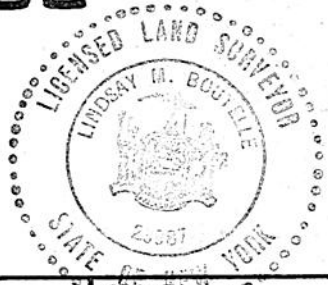


See map entitled, "MAP OF 'PINE OAKS,' PROPERTY OF ROSMAR CORPORATION," dated February 15, 1968, and made by Edward W. Boutelle and Son, Civil Engineers and Surveyors.



We hereby certify to American Title Insurance Company that the survey shown is correct.



NOTE:
COMPLETED HOUSE LOCATION

| | | |
|--------------------|---|-----------------------|
| COUNTY ALBANY | MAP OF PROPERTY OF WILLIAMS BROTHERS BUILDERS, INC. DELMAR | SCALE 1" = 30' |
| STATE NEW YORK | | DATE Feb. 11, 1975 |
| ORDER NO. 75-19 | EDWARD W. BOUTELLE AND SON CIVIL ENGINEERS AND SURVEYORS DELMAR, NEW YORK | REVISION |