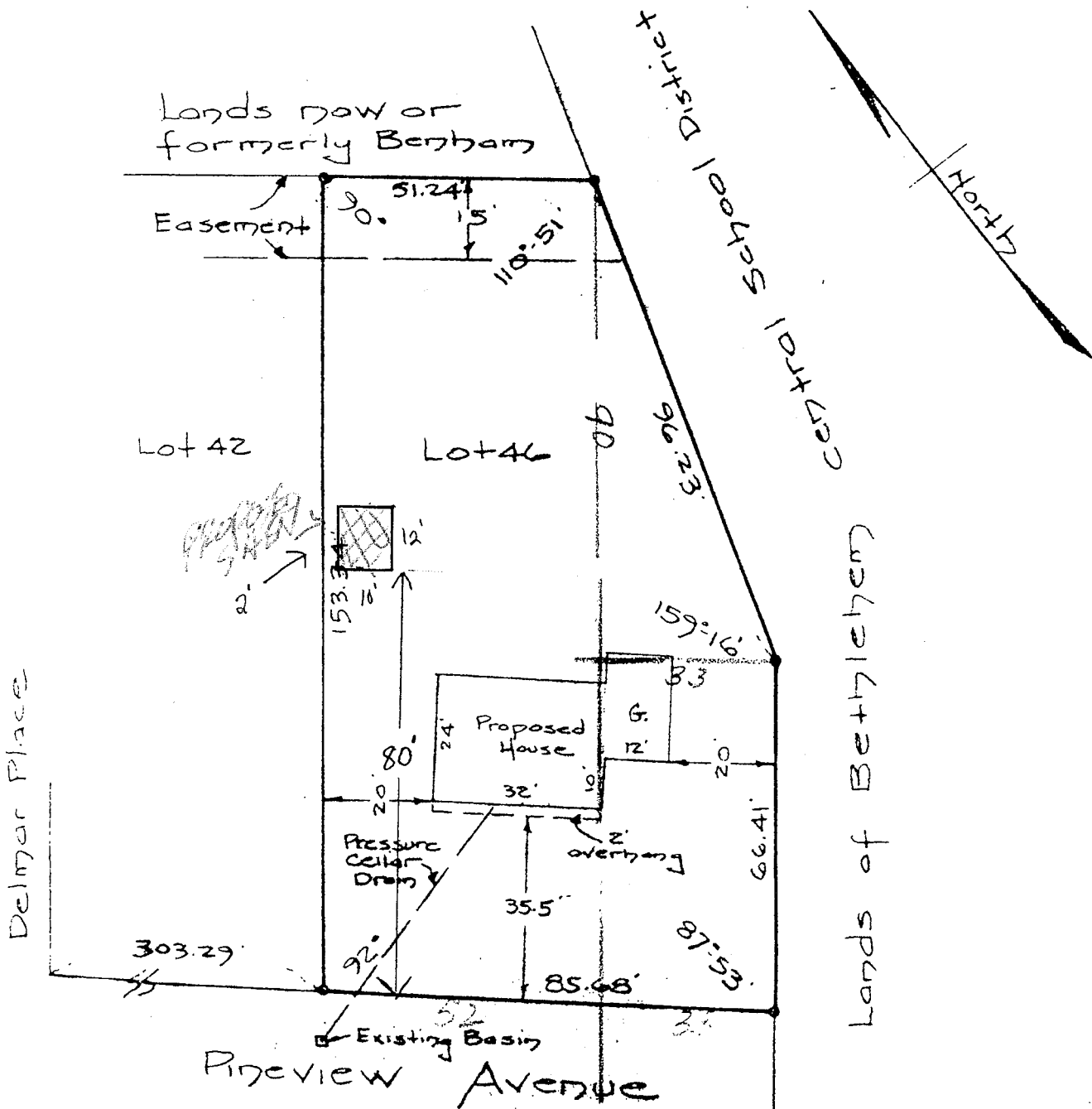


OFFICE COPY

As shown on Map of "PROPERTY OF VAN WOERT & SON, INC.", dated Nov. 10, 1958, revised Feb. 27, 1959, and made by Edward W. Boutelle & Son, Civil Engineers and Surveyors.

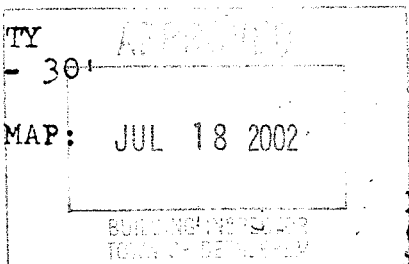


MAP OF PROPERTY OF
VAN WOERT & SON, INC.
DELMAR

ALBANY COUNTY
SCALE: 1" = 30'

NEW YORK
SEPTEMBER 2, 1959

SURVEY AND MAP: JUL 18 2002



Edward W. Boutelle & Son
Civil Engineers and Surveyors
Delmar, New York