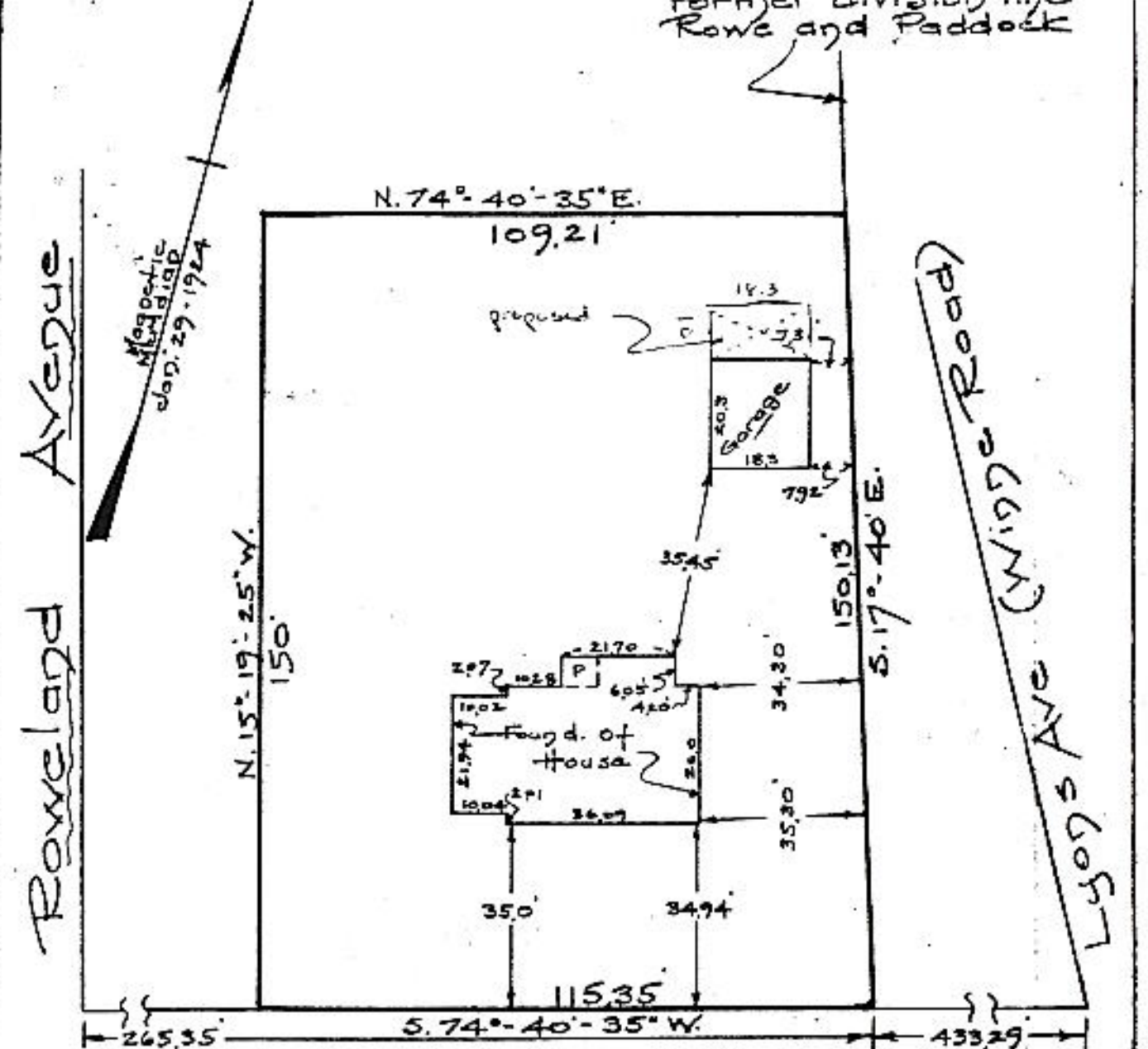


TERMINAL DIVISION
Rowe and Paddock



Pinedale Avenue

APPROVED

OCT 11 1945

MAP OF PROPERTY OF Frank W. Phear and Doris C. Phear
FRANK W. PHEAR AND DORIS C. PHEAR
TOWN OF BETHLEHEM

DELMAR
ALBANY COUNTY
SCALE 1" = 30'

TOWN OF BETHLEHEM
NEW YORK
OCT. 11, 1945

SURVEY AND MAP BY Edward W. Bentz
Licensed Engineer & Surveyor
Delmar, N. Y.

127 215-187-6-140