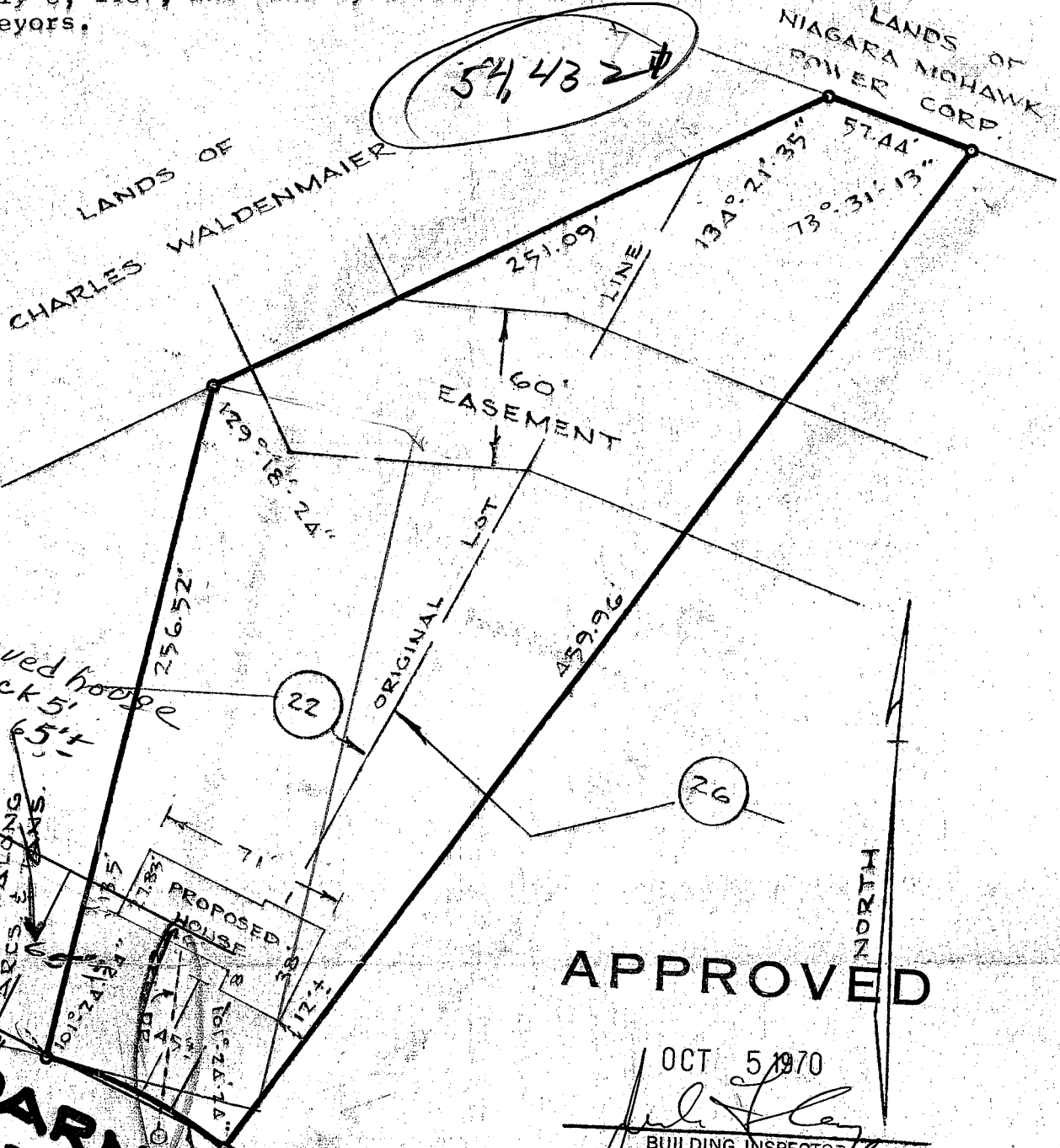


See, "MAP OF 'KING JAMES GRANT' SECTION 1, PROPERTY OF WEBER BROS, INC.," dated July 6, 1967, and made by Edward W. Boutelle and Son, Civil Engineers and Surveyors.

54,432



CAROLANNE DR.

Moved bridge
Back 5'
to 65'

196.97' ALONG
ARCS & CHORDS.

**DARNEY
GREENE**

APPROVED

OCT 5 1970

[Signature]
BUILDING INSPECTOR
TOWN OF BETHLEHEM

$R = 188.36'$ $\Delta = 22^\circ 48' 48''$ $AB = 75.00'$ $CH = 74.51'$

[Signature]

COUNTY ALBANY	MAP OF PROPERTY OF WEBER BROS, INC. DELMAR	SCALE 1" = 60'
STATE NEW YORK		DATE Sept. 25, 1970
ORDER NO. 70-335	EDWARD W. BOUTELLE AND SON CIVIL ENGINEERS AND SURVEYORS DELMAR, NEW YORK	REVISION