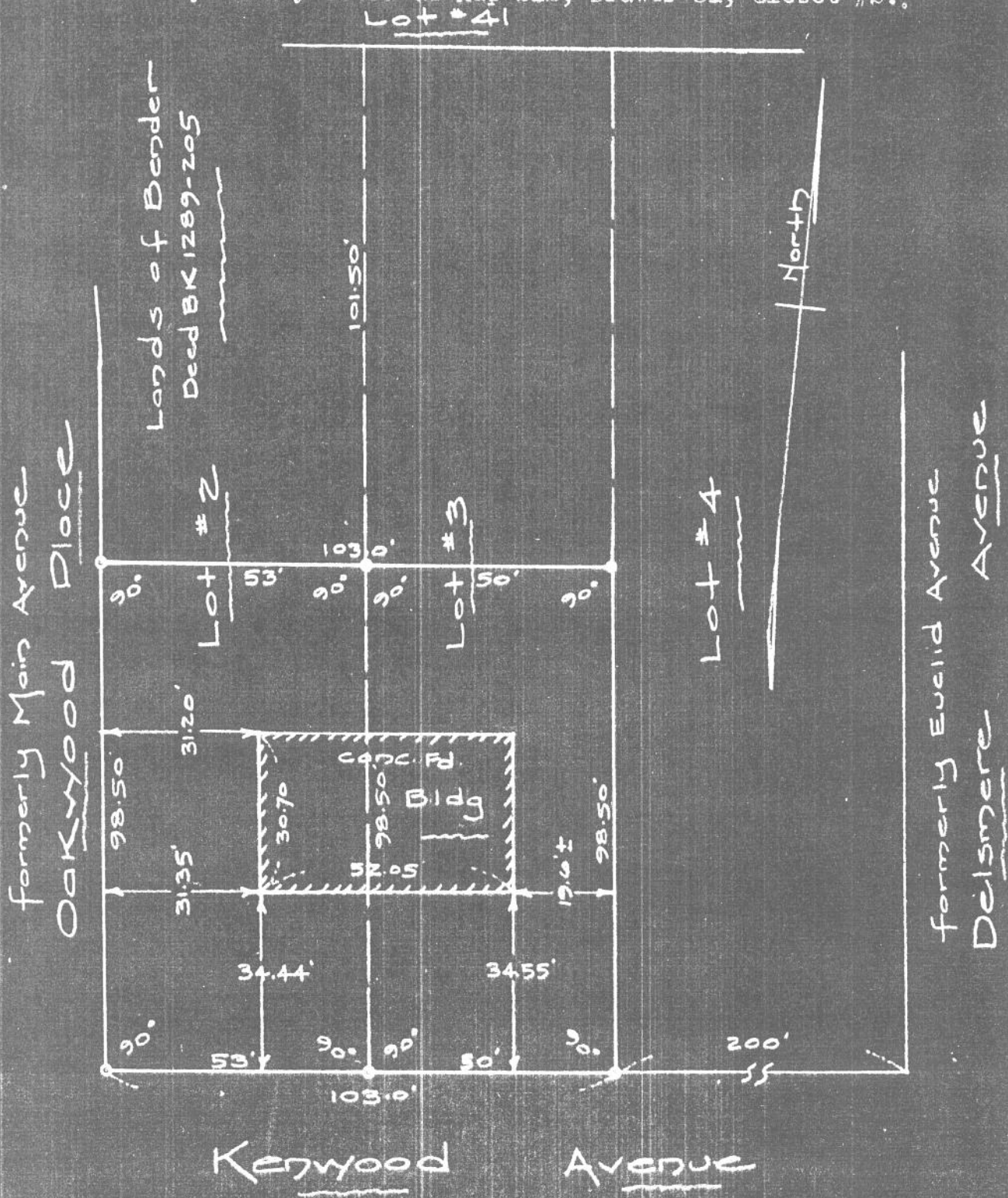


As shown on a map entitled, "LANDS OF T. J. CARRICK ESTATE," dated June 15, 1915, made by A. L. Fisher, C. E., and filed in the Office of the Albany County Clerk as Map 212, Drawer 31, Closet #2.



MAP OF PROPERTY OF
FRANK WILLIAMS
DELMAR

ALBANY COUNTY
SCALE 1" = 30'

NEW YORK
DECEMBER 19, 1951

SURVEY AND MAP BY:

Edward W. Boutelle & Son
Civil Engineers and Surveyors