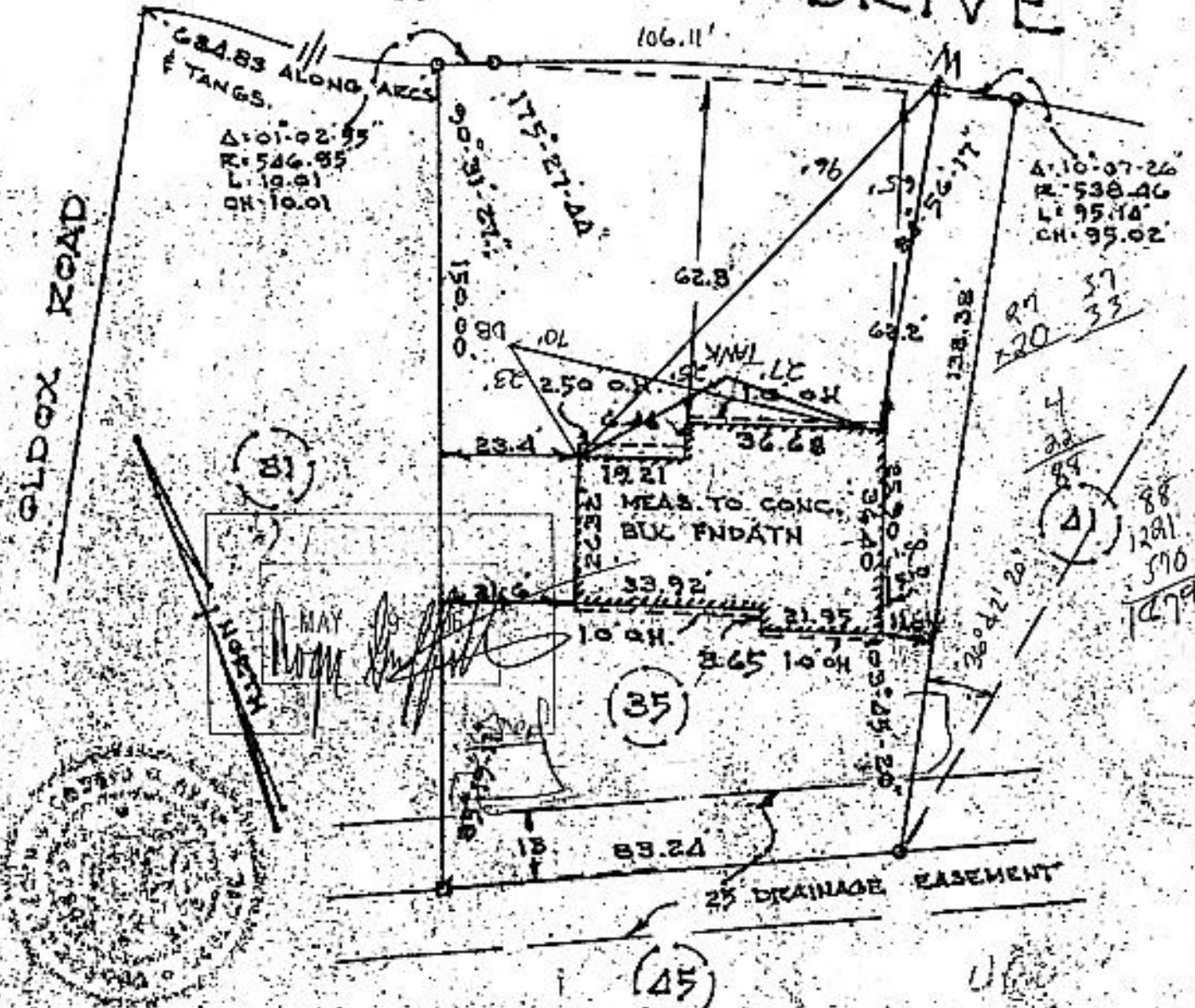


CUST.

See map entitled, "MAP OF VILLAGE PARK SECTION A PROPERTY OF SUBURBAN PLANNERS, INC." dated October 1, 1968, made by Edward W. Boutelle and Son Civil Engineers and Surveyors and filed in the Albany County Clerk's Office on November 24, 1969 as map number 4606 drawer 165.
 We hereby certify to Inter-County Title Guaranty and Mortgage Company that the survey shown is correct.

TAMARACK DRIVE



Paul E. Nitz

NOTE: COMPLETED NO. LOCATION

COUNTY Albany	MAP OF PROPERTY OF CAMPUS CLUB CORPORATION TOWN OF BETHLEHEM	SCALE 1" = 30'
CITY New York		DATE July 2, 1971
OWNER PAUL E. NITZ & WILLIAM F. NITZ, CIVIL ENGINEERS AND SURVEYORS 208 DELAWARE AVENUE		REVISION NO. LOCATED SEPT. 19, 1971