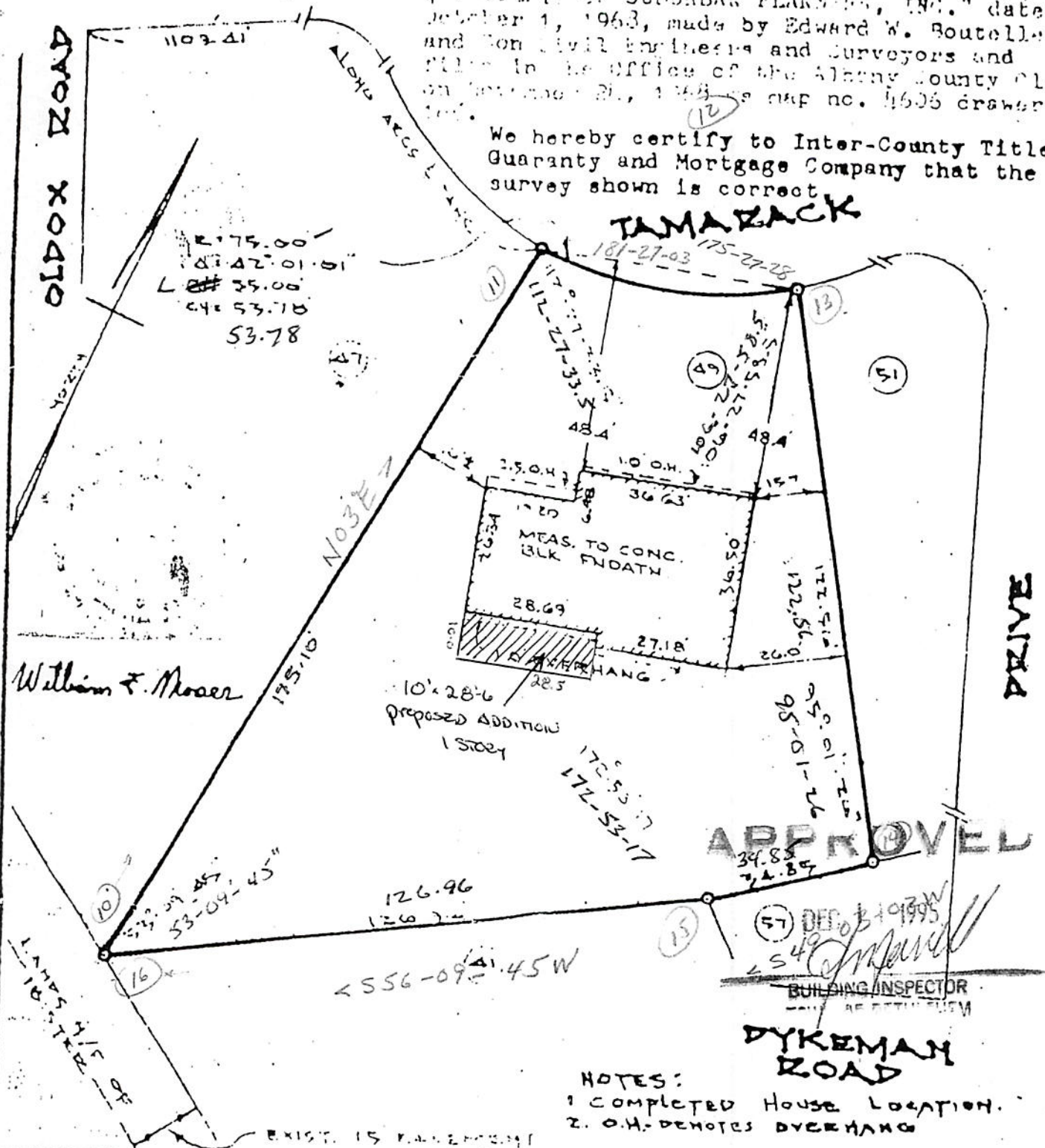


1 to Day
2 to Sheet 11/10/70

See map entitled "MAP OF VILLAGE PARK SECTION-4 PROPERTY OF SUBURBAN PLANNING, INC." dated October 1, 1963, made by Edward W. Boutelle and Son Civil Engineers and Surveyors and filed in the office of the Albany County Clerk on September 21, 1963 as map no. 4606 drawer no. 100.

We hereby certify to Inter-County Title Guaranty and Mortgage Company that the survey shown is correct.

TAMARACK



APPROVED

DEC 10 1970
 49
 BUILDING INSPECTOR
 ALBANY COUNTY

DYKEMAN ROAD

NOTES:
 1. COMPLETED HOUSE LOCATION.
 2. O.H. DENOTES DYKEMAN

County: Albany

State: New York

Order No.

No 49 Tamarack
 APPROX: 55' X 22' X 161' X 175'
 WILLIAM F. MOSEER

Scale: 1"=30'

Date: Oct. 12, 1970

Division: