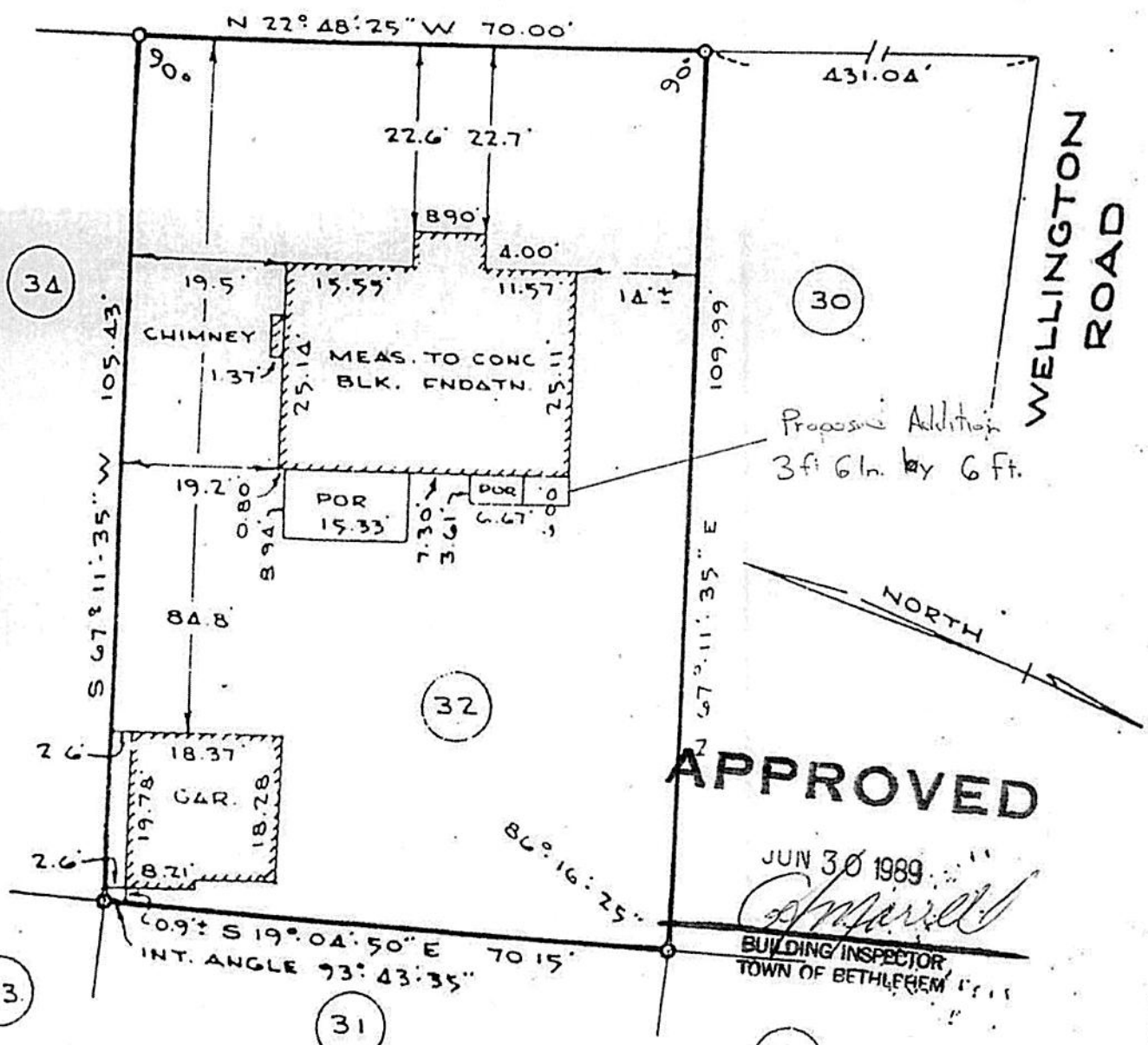


"MAP SHOWING A PORTION OF LOTS ON PROPERTY OF ALTON C. AND CAROLINE M. ROWE", dated November 2, 1953, revised December 2, 1936 and made by Edward W. Routelle, Licensed Engineer and Surveyor.

# FOREST ROAD



NOTE  
COMPLETED HOUSE LOCATION

COUNTY ALBANY	MAP OF PROPERTY OF GEORGE VANVORPUS DELMAR	SCALE 1" = 20'
STATE NEW YORK		DATE SEPT. 21, 1967
ORDER NO. 17-1015	EDWARD W. BOUTELLE AND SON CIVIL ENGINEERS AND SURVEYORS DELMAR, NEW YORK	REVISION