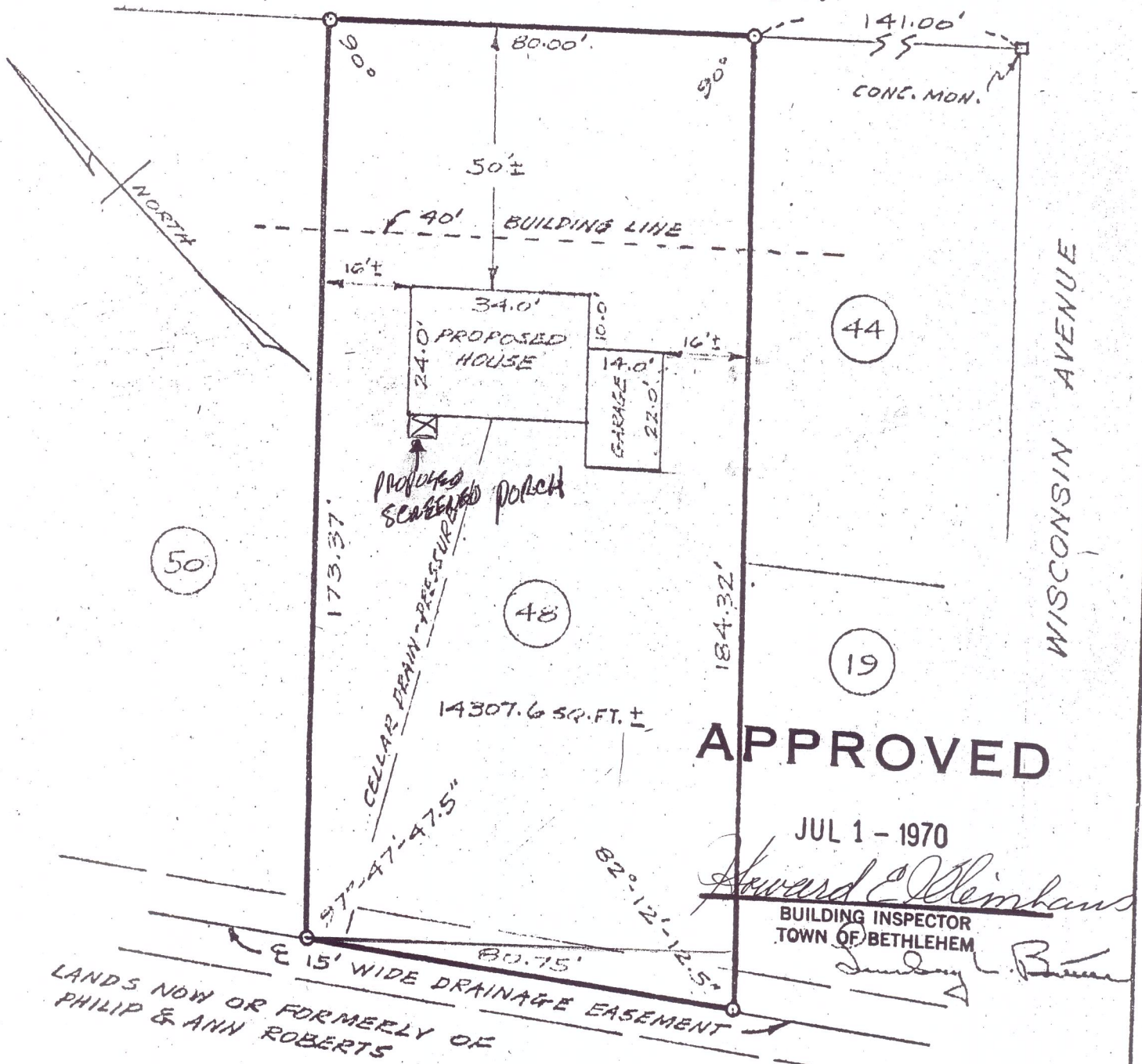


...aye O. and Sidney A. Friedman", dated January 1961, made by Sidney A. Friedman, P.E. and filed in the office of the Albany County Clerk on February 20, 1962 as Map No. 3903 in Drawer 161.

WESTCHESTER DRIVE NORTH



COUNTY	ALBANY	MAP OF PROPERTY OF KLETSY BUILDING CORPORATION DELMAR	SCALE
STATE	NEW YORK		1" - 30'
ORDER NO.	11234	EDWARD W. BOUTELLE AND SON CIVIL ENGINEERS AND SURVEYORS DELMAR, NEW YORK	DATE
			MAY 17, 1965
			REVISION