

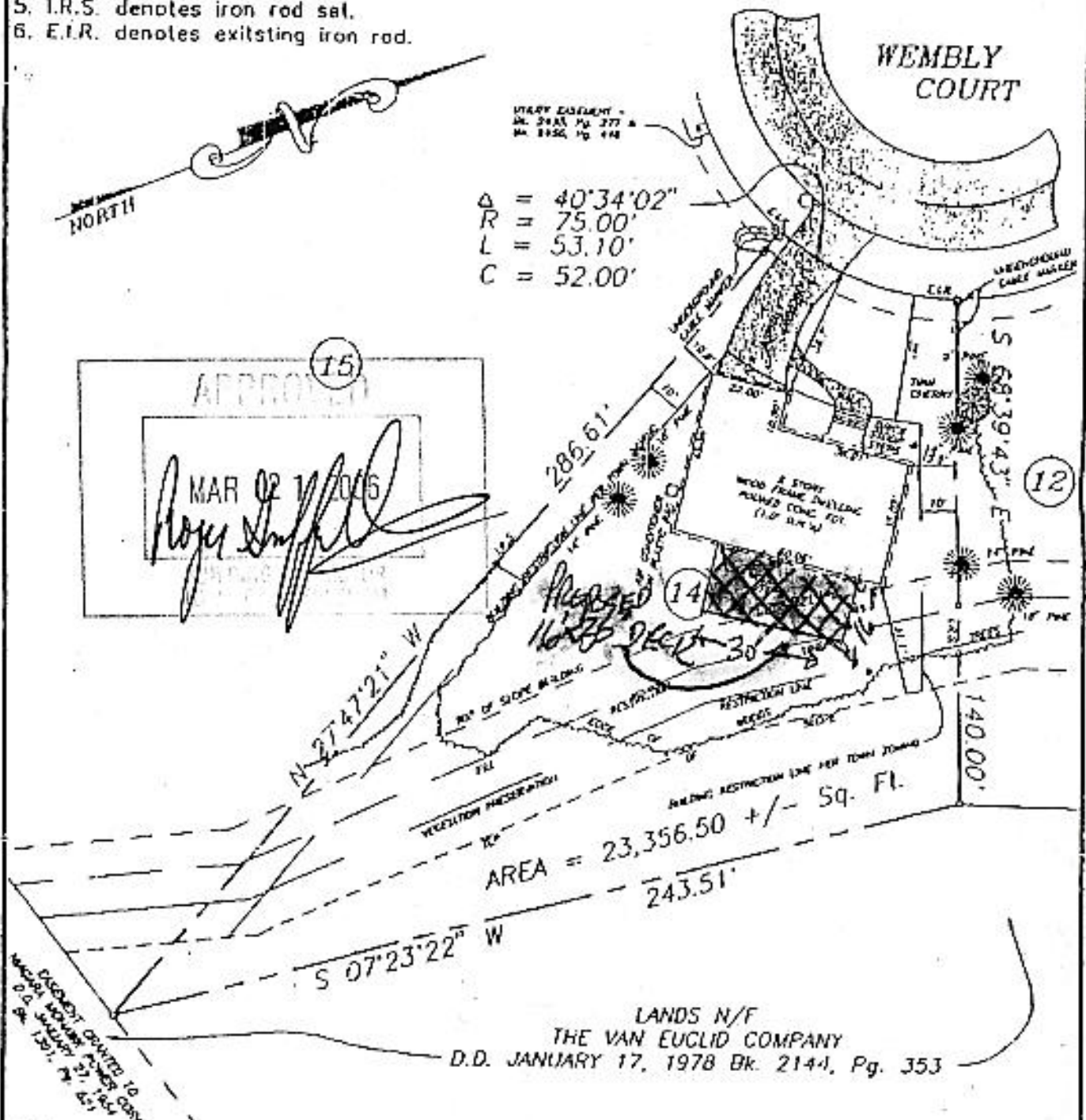
- filed map.
- 3. See Drainage Declaration contained in Bk. 2390, Pg. 792.
- 4. Utility easements contained in Bk. 2448, Pg. 1071 & Bk. 2413, Pg. 510 do not affect surveyed parcel.
- 5. I.R.S. denotes iron rod set.
- 6. E.I.R. denotes existing iron rod.



UTILITY EASEMENT -
 BK. 2448, Pg. 277 &
 BK. 2413, Pg. 448

$\Delta = 40^{\circ}34'02''$
 $R = 75.00'$
 $L = 53.10'$
 $C = 52.00'$

(15)
 APPROVED
 MAR 02 1 2016
Roger Duffell



	County:	ALBANY	MAP OF SURVEY LOT No. 14 WEMBLY COURT TOWN OF BETHLEHEM PAUL E. HITE Licensed Land Surveyor - Dalmar, New York
	State:	NEW-YORK	
	Scale:	1" = 40'	
	Date:	JULY 9, 1997	

79 360 Ap. 15 & 34
 01 113
 Vol. - 88/00
 MAR 22