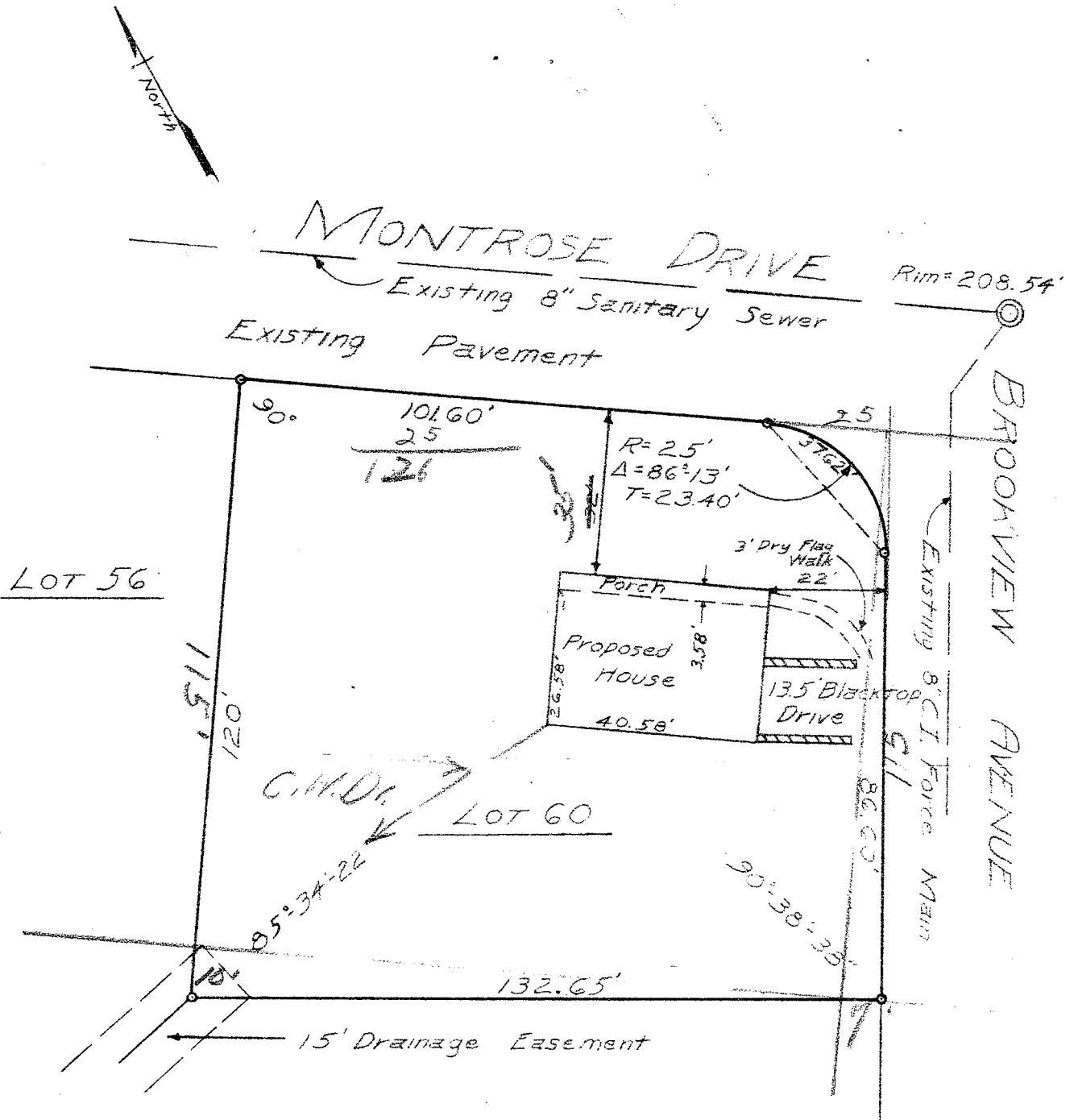


Office Copy



MAP OF PROPERTY OF WILLIAMS BROS. ELSMERE

ALBANY COUNTY SCALE: 1" - 30'

NEW YORK NOVEMBER 2, 1961

SURVEY AND MAP BY:

Edward W. Boutelle & Son Civil Engineers and Surveyors Delmar, New York New York State License