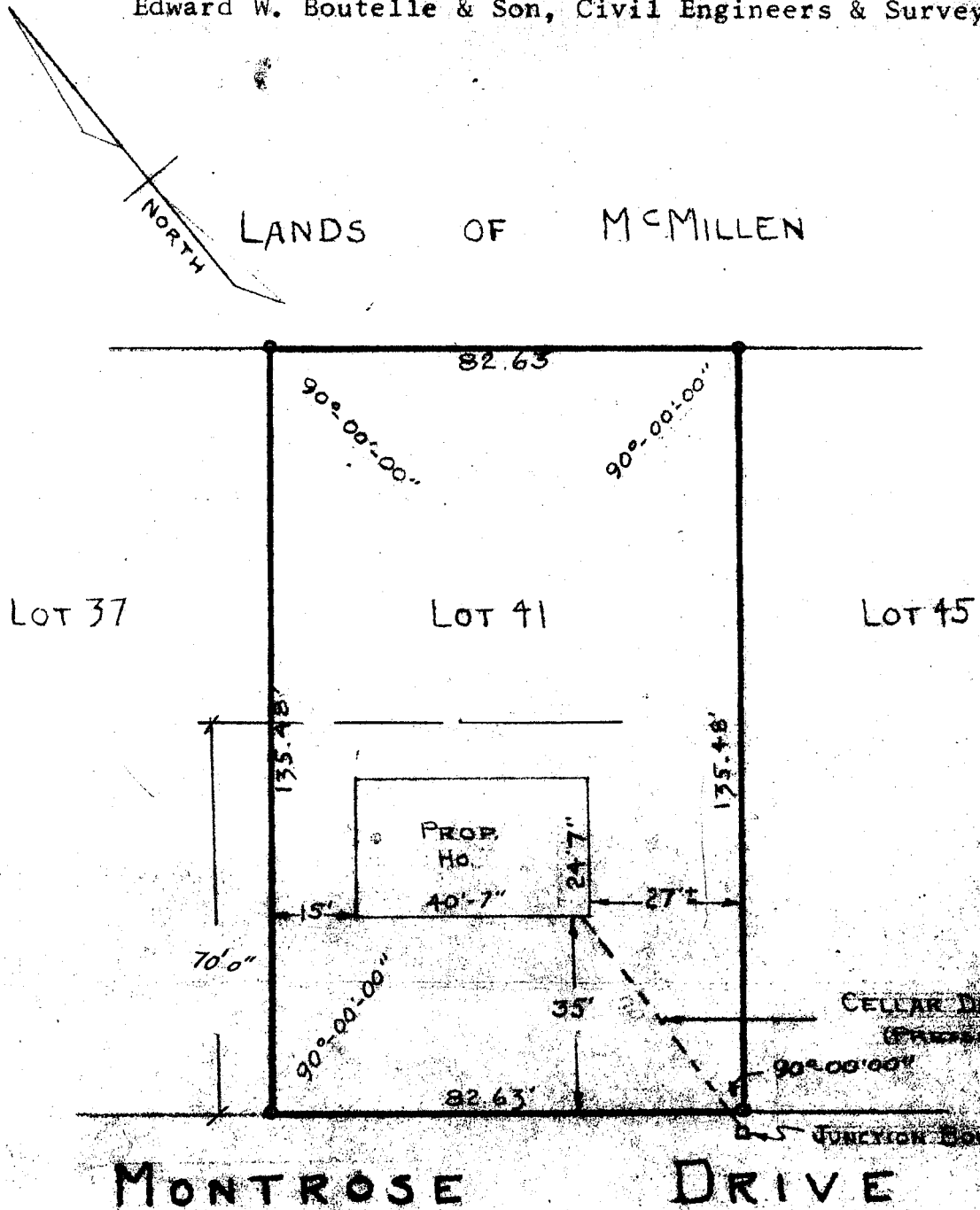


As shown on map entitled, "MAP OF PORTION OF 'KENHOLM', SECTION 2, PROPERTY OF HAROLD J. MAGEE", dated November 18, 1957 and made by Edward W. Boutelle & Son, Civil Engineers & Surveyors.



MAP OF PROPERTY OF
WILLIAMS BROS.
ELSMERE

ALBANY COUNTY
SCALE: 1" = 30'

NEW YORK
MARCH 21, 1961

SURVEY AND MAP BY:

APPROVED

Edward W. Boutelle & Son
Civil Engineers and Surveyors
Delmar, New York