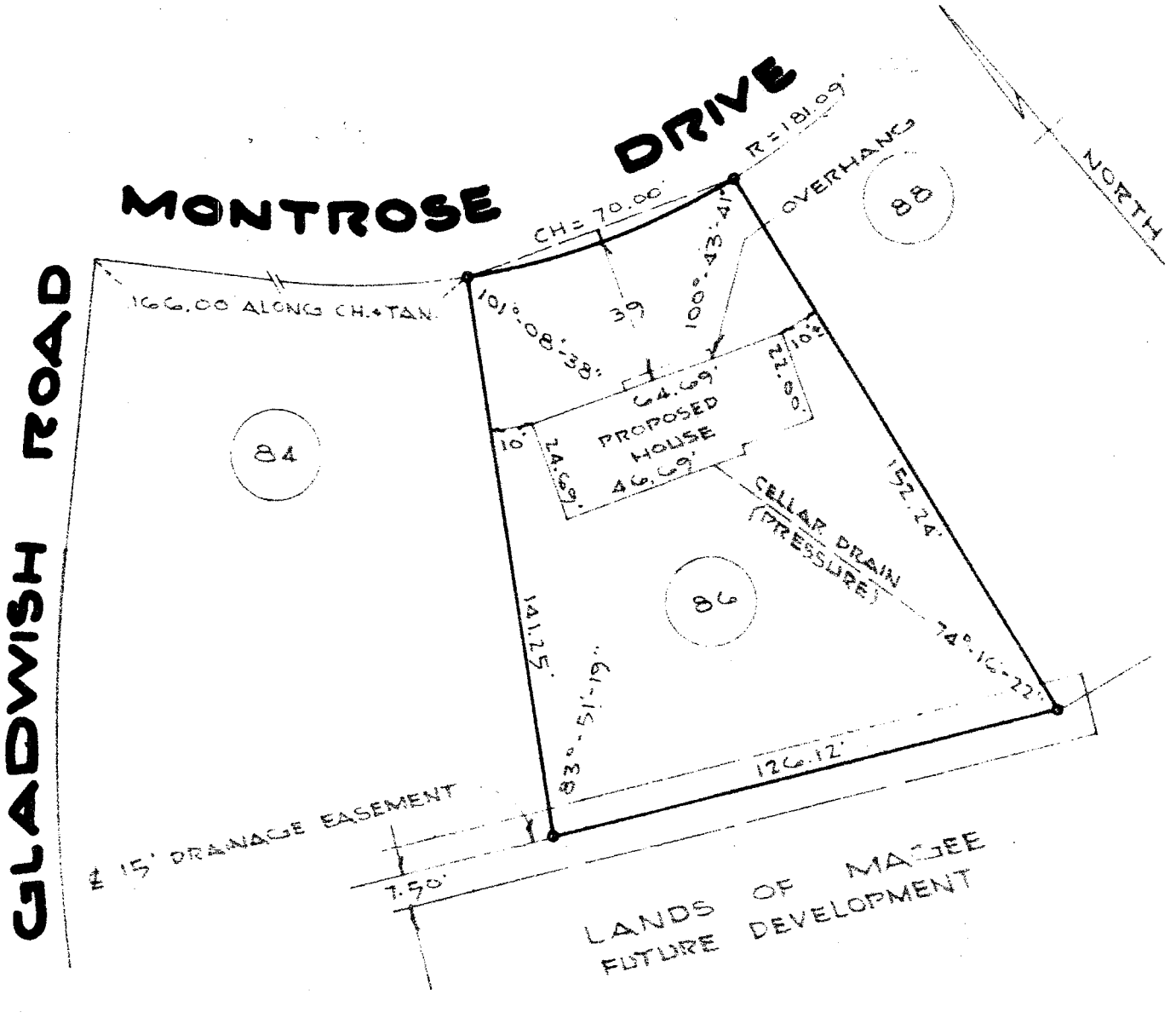


As shown on map entitled, "MAP OF PORTION OF 'KENNEDY', SECTION 4, PROPERTY OF HAROLD J. MAGEE", dated December 6, 1957, revised April 28, 1960 and made by Edward W. Boutelle & Son, Civil Engineers and Surveyors.



Edward W. Boutelle

COUNTY ALBANY	MAP OF PROPERTY OF WILLIAMS BROTHERS BUILDERS, INC. ELSMERE	SCALE 1" = 40'
STATE NEW YORK		DATE OCT. 1, 1961
ORDER NO 10695	EDWARD W. BOUTELLE AND SON CIVIL ENGINEERS AND SURVEYORS DELMAR, NEW YORK	REVISION