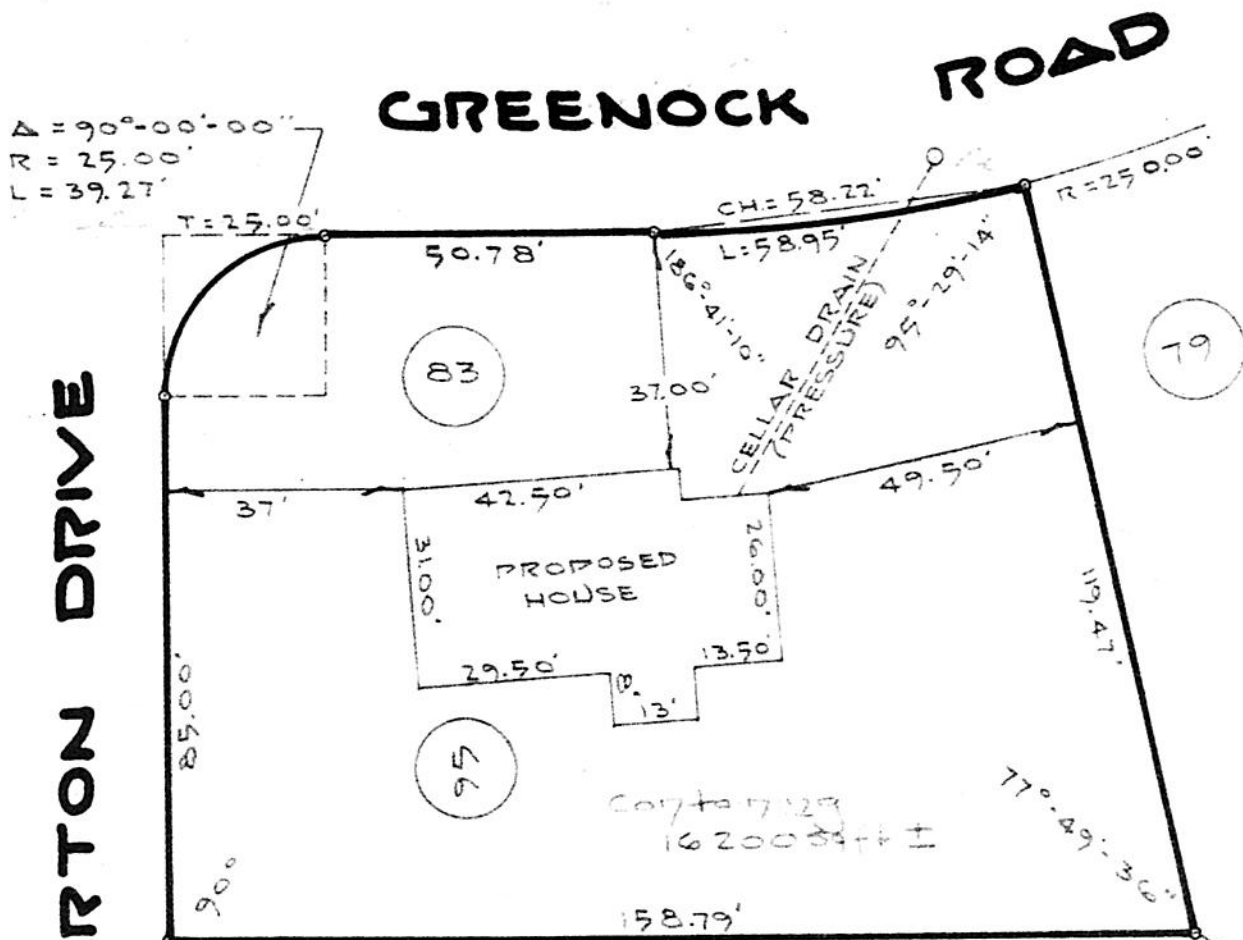
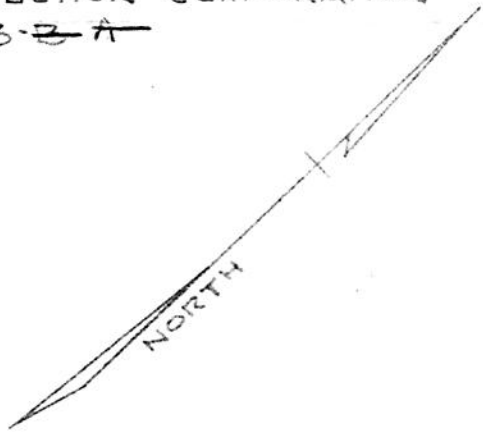


As shown on "Map of Kenholm Section 3-A, Property of Kenholm Construction Corporation", dated November 27, 1962, revised December 19, 1962 and made by Edward W. Boutelle & Son, Civil Engineers and Surveyors.



LANDS OF KENHOLM CONSTRUCTION CORPORATION  
 SECTION 3-A



*Edward W. Boutelle*

COUNTY ALBANY	MAP OF PROPERTY OF VAN WOERT & SON, INC. ELSMERE	SCALE 1" = 30'
STATE NEW YORK		DATE May 22, 1964
ORDER NO 10376	EDWARD W. BOUTELLE AND SON CIVIL ENGINEERS AND SURVEYORS DELMAR, NEW YORK	REVISION