

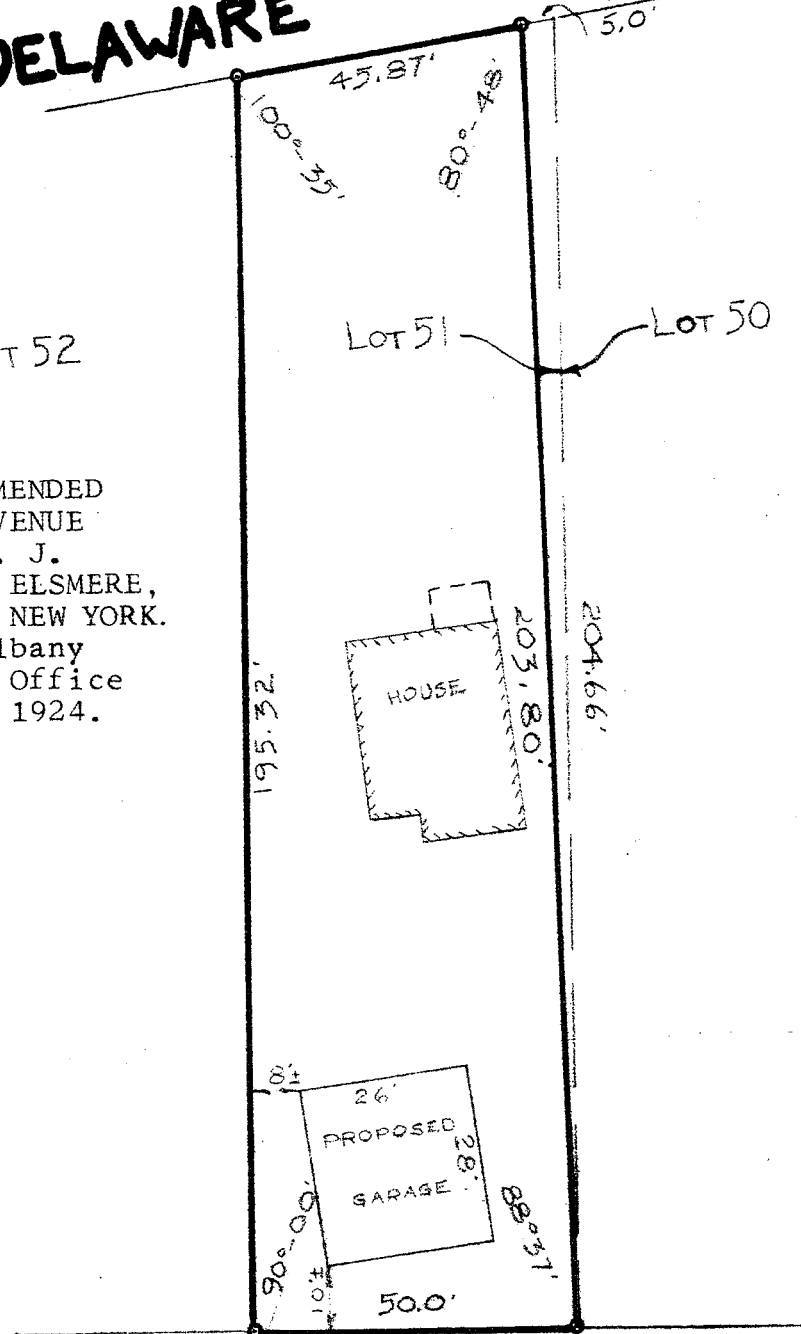
DELAWARE TURNPIKE

LOT 52

LOT 51

LOT 50

As shown on "AMENDED
MAP, LINCOLN AVENUE
SUBDIVISION, E. J.
BEDELL FARM AT ELSMERE,
ALBANY COUNTY, NEW YORK.
Filed in the Albany
County Clerk's Office
on December 2, 1924.



MAP OF PROPERTY OF
JESSE F. TURNER and SARAH E. TURNER, HIS WIFE
ELSMERE

ALBANY COUNTY
SCALE: 1" - 30'

NEW YORK
JUNE 2, 1961

SURVEY AND MAP BY:

Edward W. Boutelle & Son
Civil Engineers and Surveyors
Delmar, New York
New York State License