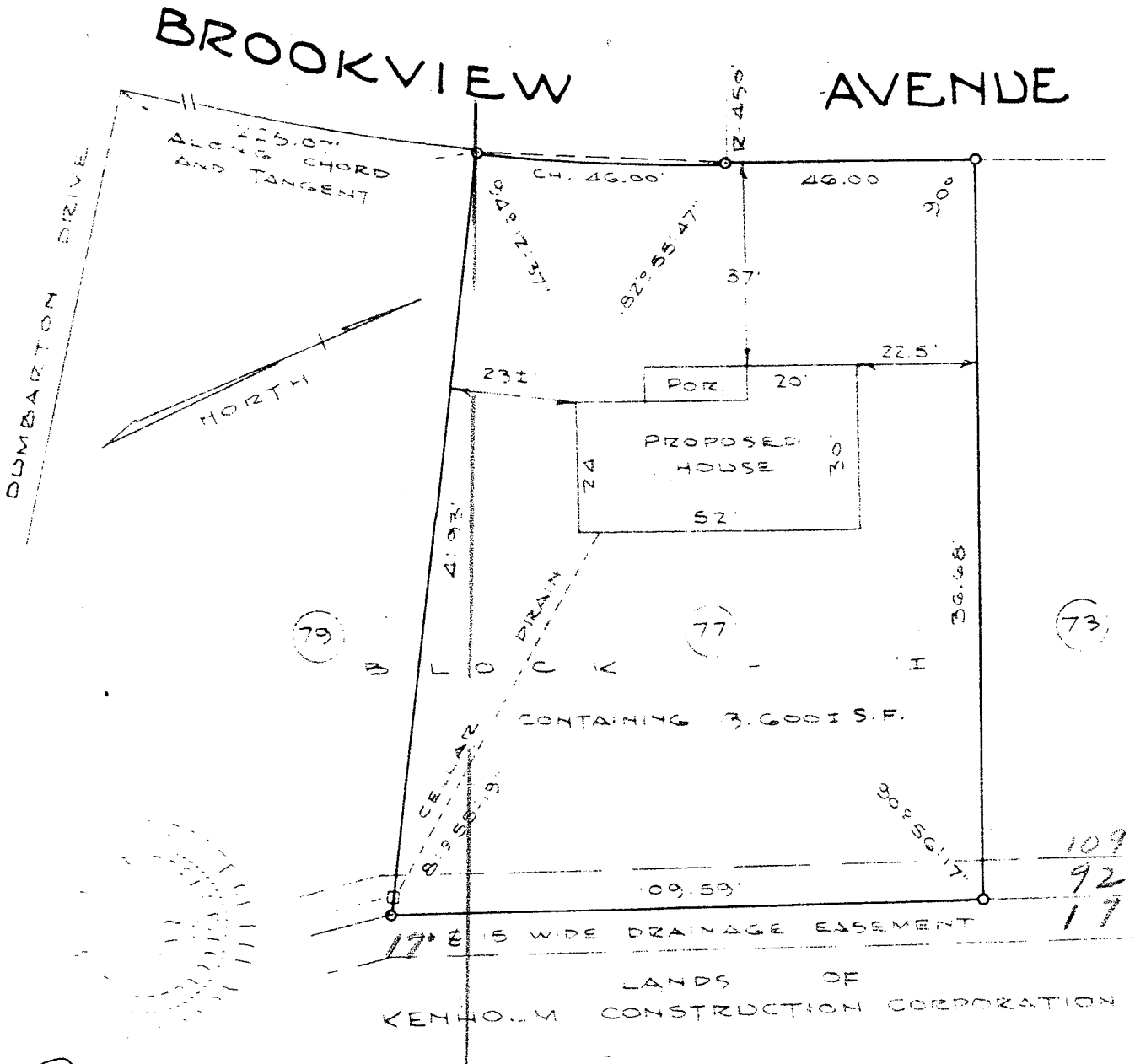


As shown on "MAP OF KENHOLM, SECTION 3B, PROPERTY OF KENHOLM CONSTRUCTION CORPORATION", dated December 14, 1962 and revised May 28, 1963 and made by Edward W. Boutelle & Son, Civil Engineers and Surveyors.

office copy $\frac{46}{46} = 92$



Edward W. Boutelle

COUNTY ALBANY	MAP OF PROPERTY OF PAUL F. SHERMAN AND NOREEN M. SHERMAN ELSMERE	SCALE 1" = 30'
STATE NEW YORK		DATE May 13, 1964
ORDER NO 10340	EDWARD W. BOUTELLE AND SON CIVIL ENGINEERS AND SURVEYORS DELMAR, NEW YORK	REVISION