

Not to scale

Guaranteed to:
Inter-County Title Guaranty & Mortgage Co.

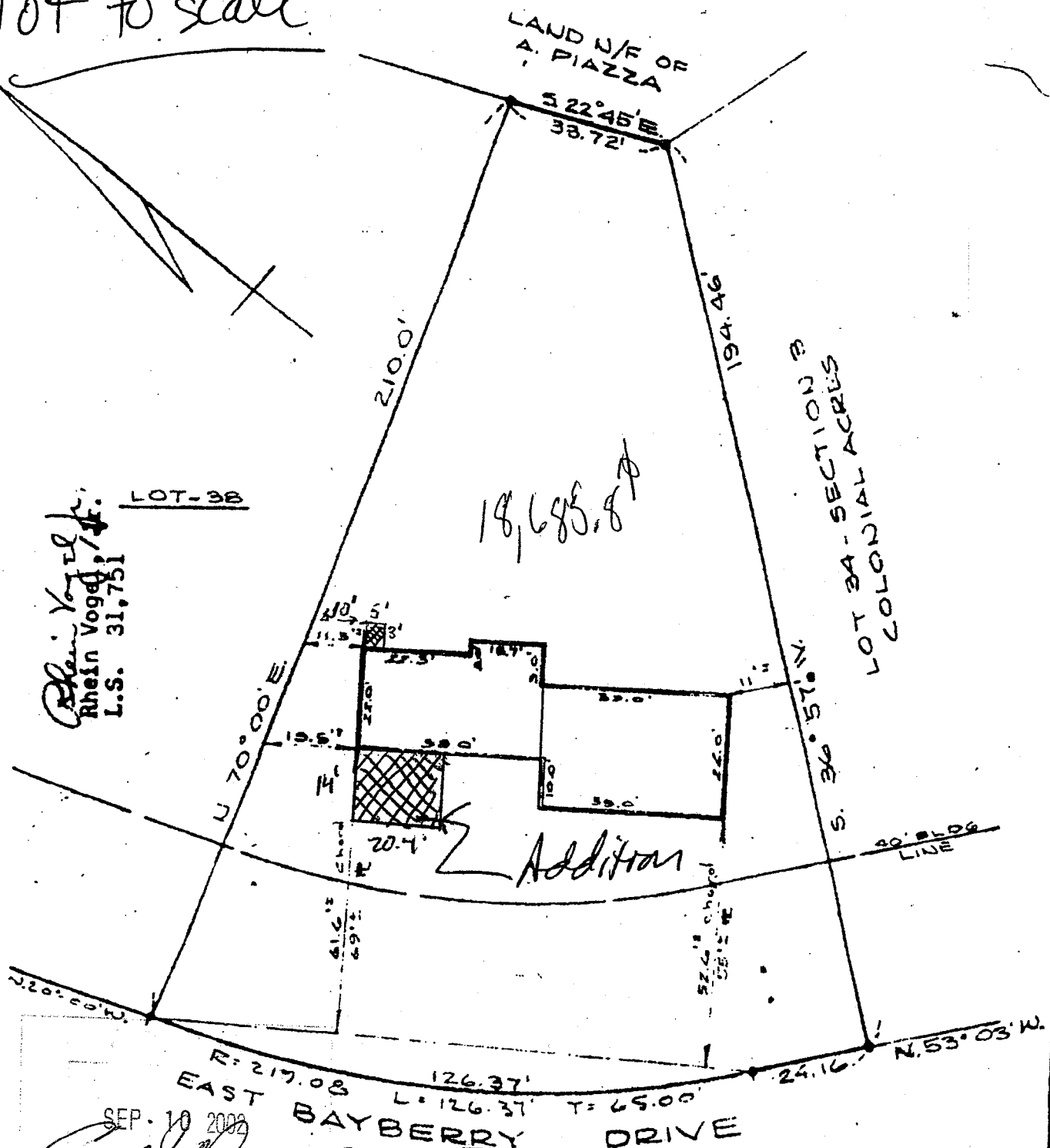
Rhein Vogel
Rhein Vogel, Jr.
L.S. 31,751

LOT-38B

18,685.8

Addition

LOT 34 - SECTION 2
COLONIAL ACRES



SEP. 10 2002
Rhein Vogel

R = 217.08 L = 126.37 T = 65.00
EAST BAYBERRY DRIVE

LOT 36 - SECT. 4 EAST BAYBERRY DRIVE COLONIAL ACRES	
TOWN OF BETHLEHEM	COUNTY: ALBANY, N.Y.
SCALE: 1" = 50'	DATE: MAY 15, 1964
C. T. MALE ASSOCIATES 3010 TROY ROAD SCHENECTADY, NEW YORK	
MAP BY: <i>Rhein Vogel, Jr.</i>	LIC. NO.: LS 31751

DATE	5-18-64	PROG FOUND. LOC.	RV, Jr.
RECORD OF WORK	6/2/64	FOUNDATION LOCATION FOR GLENMOUNT DEVELOPMENT CORP.	R.Y. Jr.