

location map 1"=50'
Commercial Hamlet
shown hatched

PLANT SPECIES	HEIGHT	# OF PLANTS	SPACING
HEDGES	8 FEET	24	3'
PERENNIAL LEAF SHRUBS	4 FEET	48	3'
TREES	12 FEET	6	30'

PLANNING BOARD APPROVAL
APPROVED / DISAPPROVED

OWNER: GLENMONT PROPERTIES LLC
5306 RT. 9W NORTH
NEWBURGH NY 12550

PLAN PREPARED BY: CAPITAL ARCHITECTURE

DATE: 10 APRIL 06

TAX MAP: 97.12-1-9

EXISTING OPENING LENGTH - 180'
NEW OPENING LENGTH - 92'

THE SITE IS ENTIRELY WITHIN THE WATER AND SEWER DISTRICT

CANDPY LIGHTS, (16) 250 WATT DOWNLIGHTS

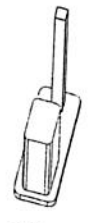
LAND OF VICTORIA ESTATES LLC

N 14°20'00" E
162.53'

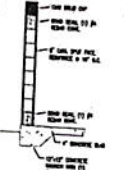


5 CANOPY ELEVATION - SW
OFFICE - SEE IN DETAIL, ELEVATION 100

6 CANOPY ELEVATION - FEURA BUSH
OFFICE - SEE IN DETAIL, ELEVATION 100



7 ISLAND DETAIL
ISLAND



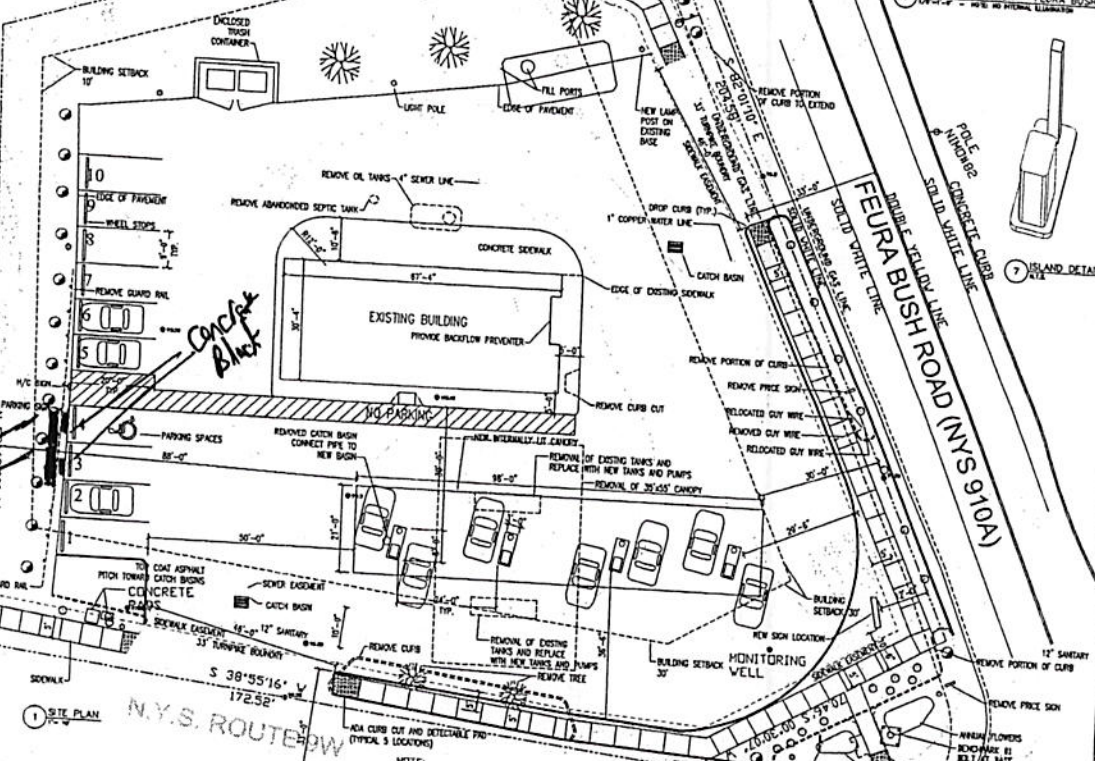
3 TRASH ENCLOSURE
12" X 12" X 12"

LAND OF VICTORIA ESTATES LLC

NYC ZONING

REMOVE STEEL BOARD RAIL

REMOVE STEEL BOARD RAIL



CAPITAL ARCHITECTURE
ALBANY, NY 12203
535-1442

GLENMONT MOBIL
ROUTE 9W AND FEURA BUSH ROAD
ALBANY, NY

REGISTERED:
SCALE: AS SHOWN
DATE: 12 JAN 06
BY: J. JAMES
REVISION: 1

PROTECTED BY THIS PROTECTION ACT AND ANY REVISIONS THEREOF. COPYRIGHTED BY CAPITAL ARCHITECTURE

NOTE:
ANY DRAINAGE WORK WITHIN THE STATE HIGHWAY RIGHT OF WAY IS SUBJECT TO NYSOT REVIEW AND APPROVAL AND WILL REQUIRE AN AMENDMENT TO THE HIGHWAY WORK PERMIT.

720 gallons - shall be placed 10' from Constructible max
- shall be protected from vehicle damage

APPROVED

MAY 22 2013

David P. Rao

BUILDING INSPECTOR
TOWN OF BETHLEHEM