

SEE MAP ENTITLED, "THE MEADOWS AT BETHLEHEM, A NEW YORK PARTNERSHIP & YORK LAND DEVELOPMENT CORPORATION, THE MEADOWS SUBDIVISION, SECTION 2, TOWN OF BETHLEHEM", dated September, 1989, last revised May 5, 1993, filed in the Albany County Clerk's Office on May 24, 1993 as map no. 9710, dt. no. 172, made by J. Kenneth Fraser and Associates, P.C. and PAUL E. HITE, L.L.S.

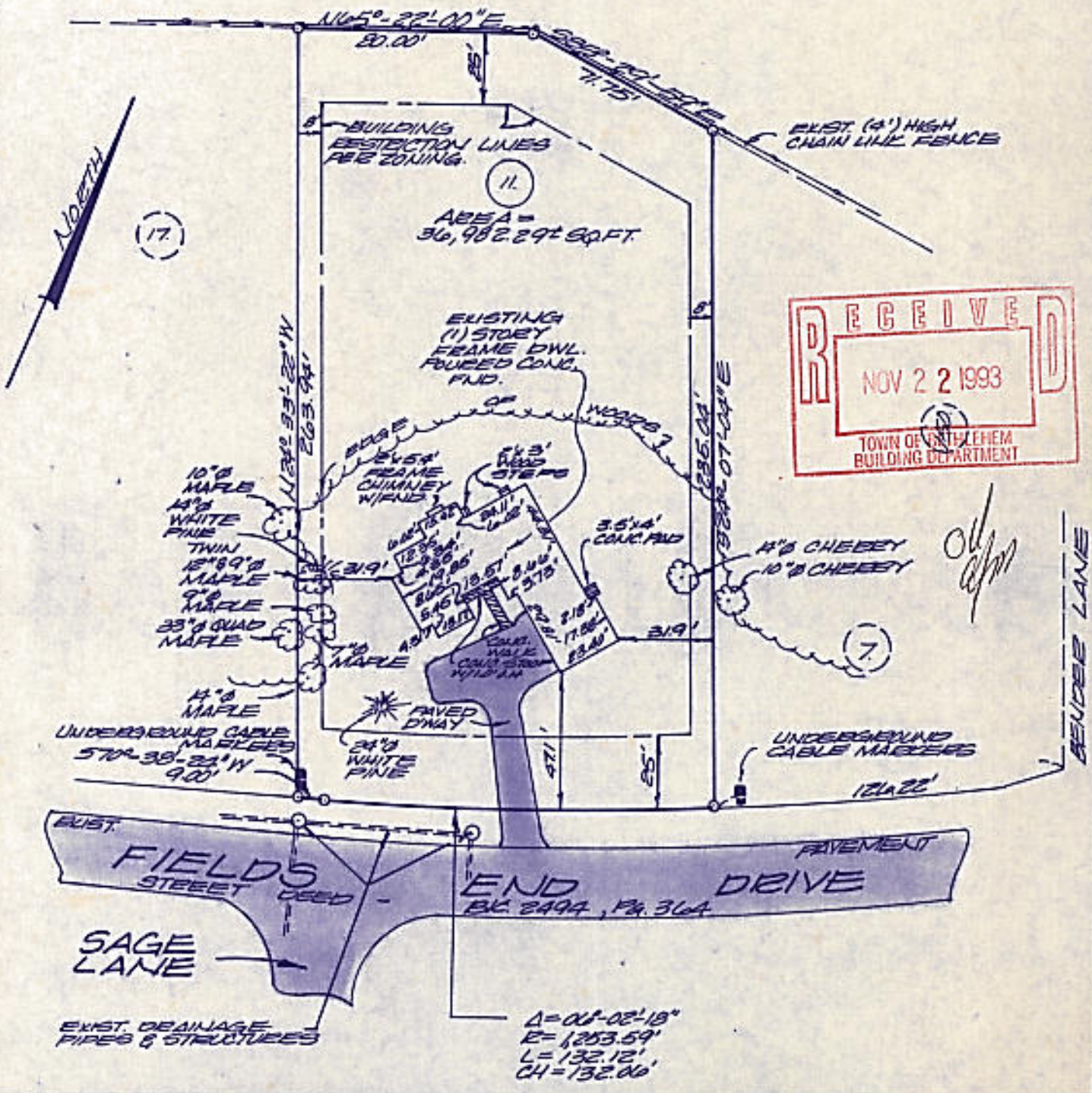
**CERTIFICATION:**  
 Survey shown is in accordance with the minimum standards of "CODE OF PRACTICE FOR LAND SURVEYS" as adopted by the New York State Association of Professional Land Surveyors.


**CERTIFIED TO:**  
 American Residential Mortgage Corporation, its successors and/or assigns,  
 Old Republic National Title Insurance Company (Title No. SA93-1857),  
 Wayne E. Johnson and Barbara J. Collins Johnson.

- NOTES:**  
 1) Right-of-Way & Easements in the following books and pages do not affect surveyed premises; BK. 2052, Pg. 882, BK. 2090, Pg. 1079, BK. 2090, Pg. 1083, BK. 2219, Pg. 69, BK. 2219, Pg. 73, BK. 2219, Pg. 89 & BK. 2219, Pg. 93.  
 2) Subject to Declaration of Covenants & Restrictions - BK. 2494, Pg. 949.  
 3) Subject to restrictions as shown on above referenced filed subdivision map.

**DELMAR BY-PASS  
 N.Y.S. ROUTE 32**

NOTICE OF APPROPRIATION  
 SEE BK. 1702, Pg. 503



	County: Albany	"MAP OF SURVEY LOT NUMBER 11 FIELDS END DRIVE TOWN OF BETHLEHEM  <b>PAUL E. HITE</b> Licensed Land Surveyor - Delmar, New York
	State: New York	
	Scale: 1" = 50'	
	Date: 11-18-93	