

439-1699

**MAP REFERENCE:**

The Meadows At Bethlehem, A New York Partnership & York Land Development Corporation, The Meadows Subdivision, Section 2," dated September 1989, revised to May 5, 1993, by Paul E. Hite, L.S. and J. Kenneth Fraser and Associates, P.C., as filed in the Albany County Clerk's Office on May 24, 1993, in drawer 172, as map no. 9770.

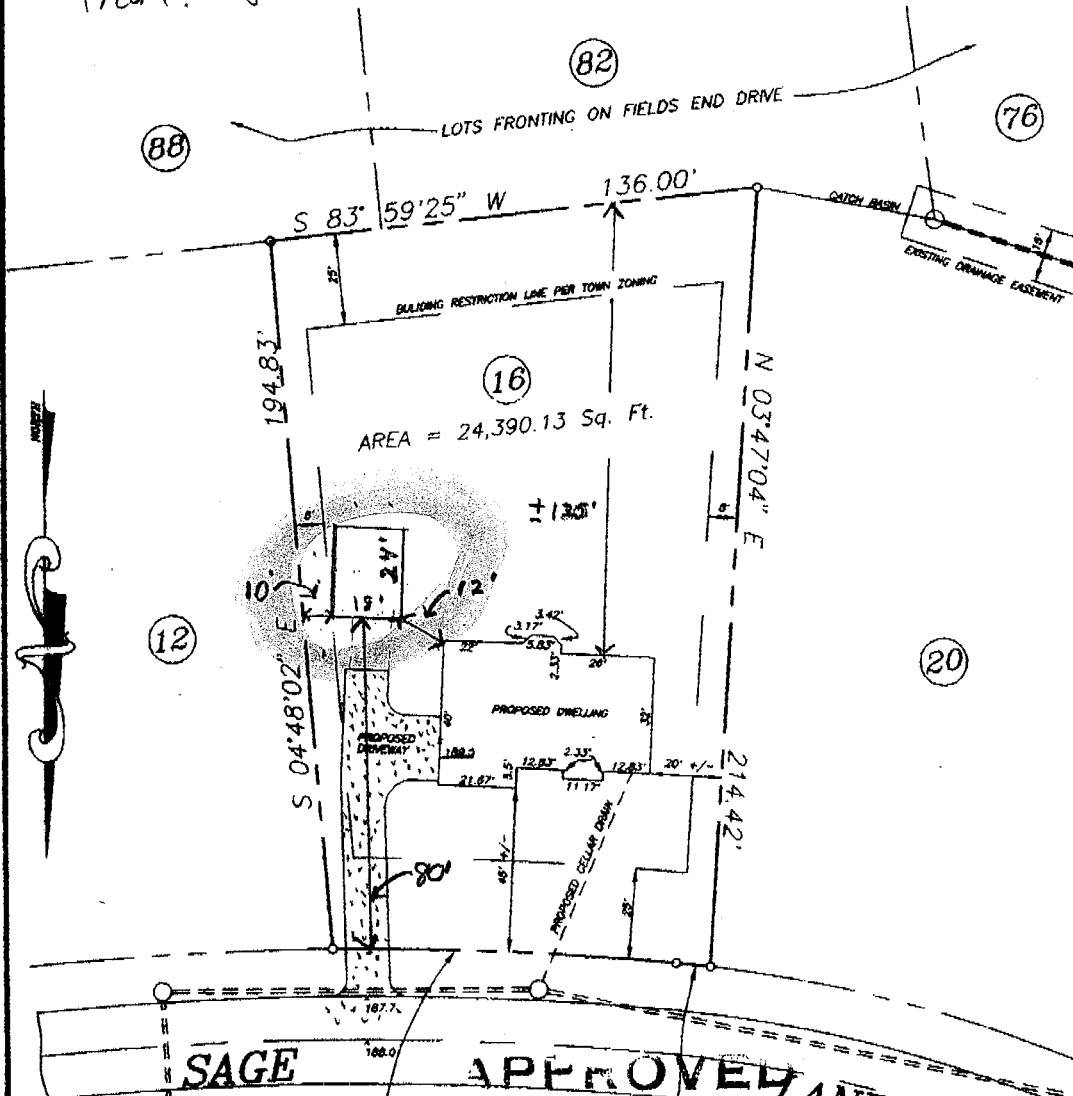
**CERTIFICATION:**

Survey shown is in accordance with the minimum standards of "Code of Practice For Land Surveys" as adopted by the New York State Association of Professional Land Surveyors.

**NOTES:**

1. 200.6 denotes existing elevation.
2. 201.8 denotes proposed elevation.

TO: John FLAMAGAN  
 FROM: GABO SWIFT



$\Delta = 05^{\circ}48'28''$   
 $R = 942.02'$   
 $L = 95.49'$   
 $C = 95.45'$

$\Delta = 01^{\circ}20'44''$   
 $R = 405.00'$   
 $L = 9.51'$   
 $C = 9.51'$

*Paul E. Hite*  
 AUG 15 1997  
 BUILDING INSPECTOR MAP OF

	County:	ALBANY	LOT No. 16 SAGE LANE TOWN OF BETHLEHEM PAUL E. HITE Licensed Land Surveyor - Delmar, New York
	State:	NEW YORK	
	Scale:	1" = 40'	
	Date:	AUG. 14, 1997	

*OK 3/16/98*

183 20  
 183 20  
 183 20