

MAP REFERENCES

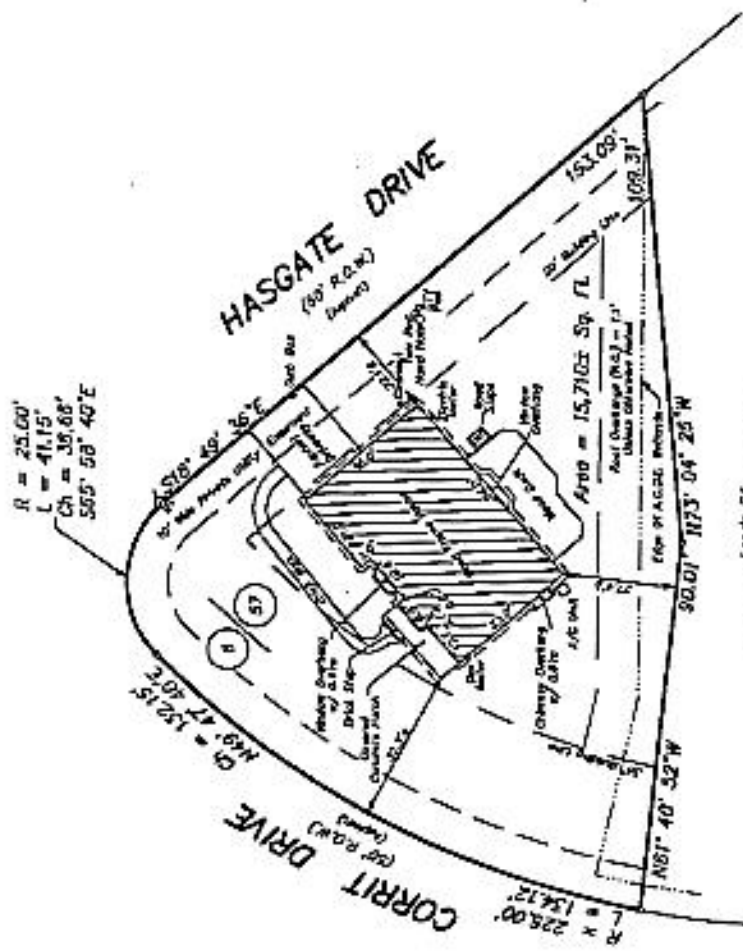
MAP NUMBER: HASWELL FARMS SUBDIVISION, DATE: OCTOBER 14, 1984
MAP NUMBER: 1984-001, DATE: 1984, PREPARED BY THE PLANNING DEPARTMENT
OF ALBANY COUNTY ENGINEERING OFFICE AT 100 STATE ST., ALBANY, NY 12202
A COPY OF SAID MAP IS FILED IN THE OFFICE OF THE COUNTY CLERK AT 100 STATE ST., ALBANY, NY 12202

PLAT DATE: 12/27/97
PLAT NUMBER: 12/27/97
PLAT NUMBER: 12/27/97

LOT 6 CORRIT DRIVE
LOT 57 HASGATE DRIVE
HASWELL FARMS SUBDIVISION

TOWN OF HENRIKSDEN ALBANY COUNTY, NEW YORK
SCALE: 1" = 30'
DATE: NOVEMBER 20, 1999
TELEPHONE NO.: (518) 363-0834 MAP NO.: 97-11-9918

Gilbert VanGuilder & Associates
Professional Land Surveyors
908 Route 148, Clifton Park, New York 12065



Lots of
The Homeowners Association
A.C.C.C. Plat

UNDEVELOPED ALTERNATIONS OR MODIFICATIONS TO THIS
PLAT AND A REVOLUTION OF THE PLAT FOR THE
PURPOSE OF THE PLAT SHOULD BE FILED WITH THE
COUNTY CLERK, ALBANY COUNTY, NEW YORK, WITHIN
THIRTY (30) DAYS OF THE DATE OF THE
RECORDING OF THIS PLAT.

"CERTIFICATE OF TITLE" IS NOT A GUARANTEE OF THE
ACCURACY OF THE INFORMATION CONTAINED HEREIN.
THE SURVEYOR'S LIABILITY IS LIMITED TO THE
PROFESSIONAL SERVICES PROVIDED. THE SURVEYOR
IS NOT RESPONSIBLE FOR THE ACCURACY OF THE
INFORMATION CONTAINED HEREIN OR FOR THE
ACTION TAKEN BY ANY PARTY AS A RESULT OF
RELYING ON THE INFORMATION CONTAINED
HEREIN. OTHER THAN THE ABOVE SAID,
THE SURVEYOR'S LIABILITY IS LIMITED TO THE
PROFESSIONAL SERVICES PROVIDED.

JOHANN T. RUDOLZAU, P.L.S. No. 49755