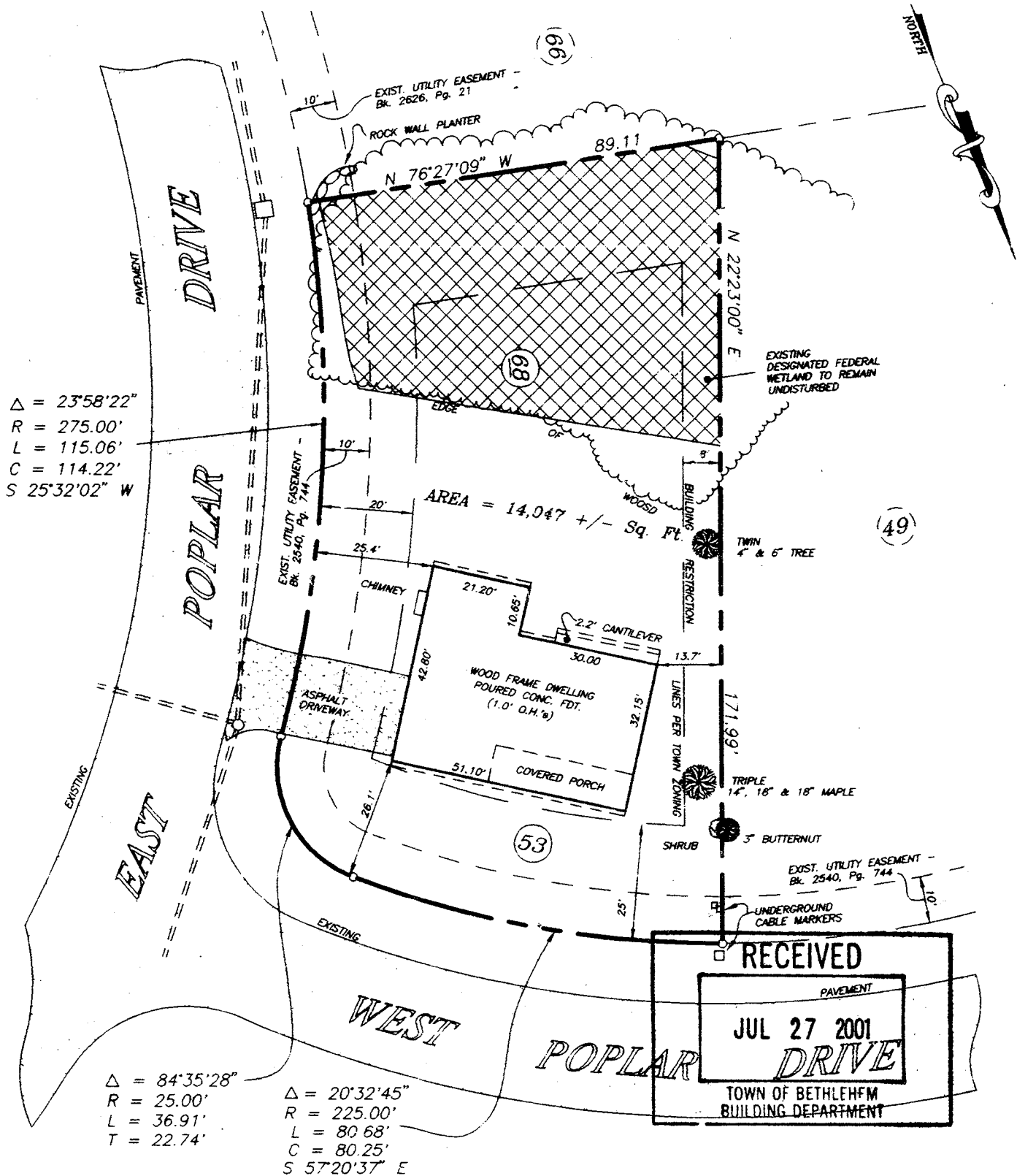


4. See Cutting and Trimming Rights granted to utility company, Bk. 1254, Pg. 190.
5. See Utility Easement Bk. 1515, Pg. 301.
6. Easement "G" (Bk. 2522, Pg. 596) along southerly line recinded by Town per Bk. 2630, Pg. 64.

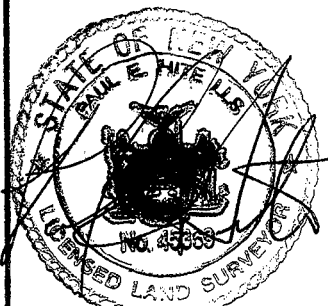


$\Delta = 23^{\circ}58'22''$   
 $R = 275.00'$   
 $L = 115.06'$   
 $C = 114.22'$   
 $S 25^{\circ}32'02'' W$

$\Delta = 84^{\circ}35'28''$   
 $R = 25.00'$   
 $L = 36.91'$   
 $T = 22.74'$

$\Delta = 20^{\circ}32'45''$   
 $R = 225.00'$   
 $L = 80.68'$   
 $C = 80.25'$   
 $S 57^{\circ}20'37'' E$

RECEIVED  
 PAVEMENT  
 JUL 27 2001  
 DRIVE  
 TOWN OF BETHLEHEM  
 BUILDING DEPARTMENT



County:  
**ALBANY**  
 State:  
**NEW YORK**  
 Scale:  
**1" = 30'**  
 Date:  
**JULY 25 2001**

MAP OF  
**LOT No. 68 EAST POPLAR DRIVE**  
**a.k.a. LOT No. 53 WEST POPLAR DRIVE**  
 "COLONIAL WOODLANDS"  
 SECTION No. 1  
**TOWN OF BETHLEHEM**  
**PAUL E. HITE**  
 Licensed Land Surveyor - Delmar, New York