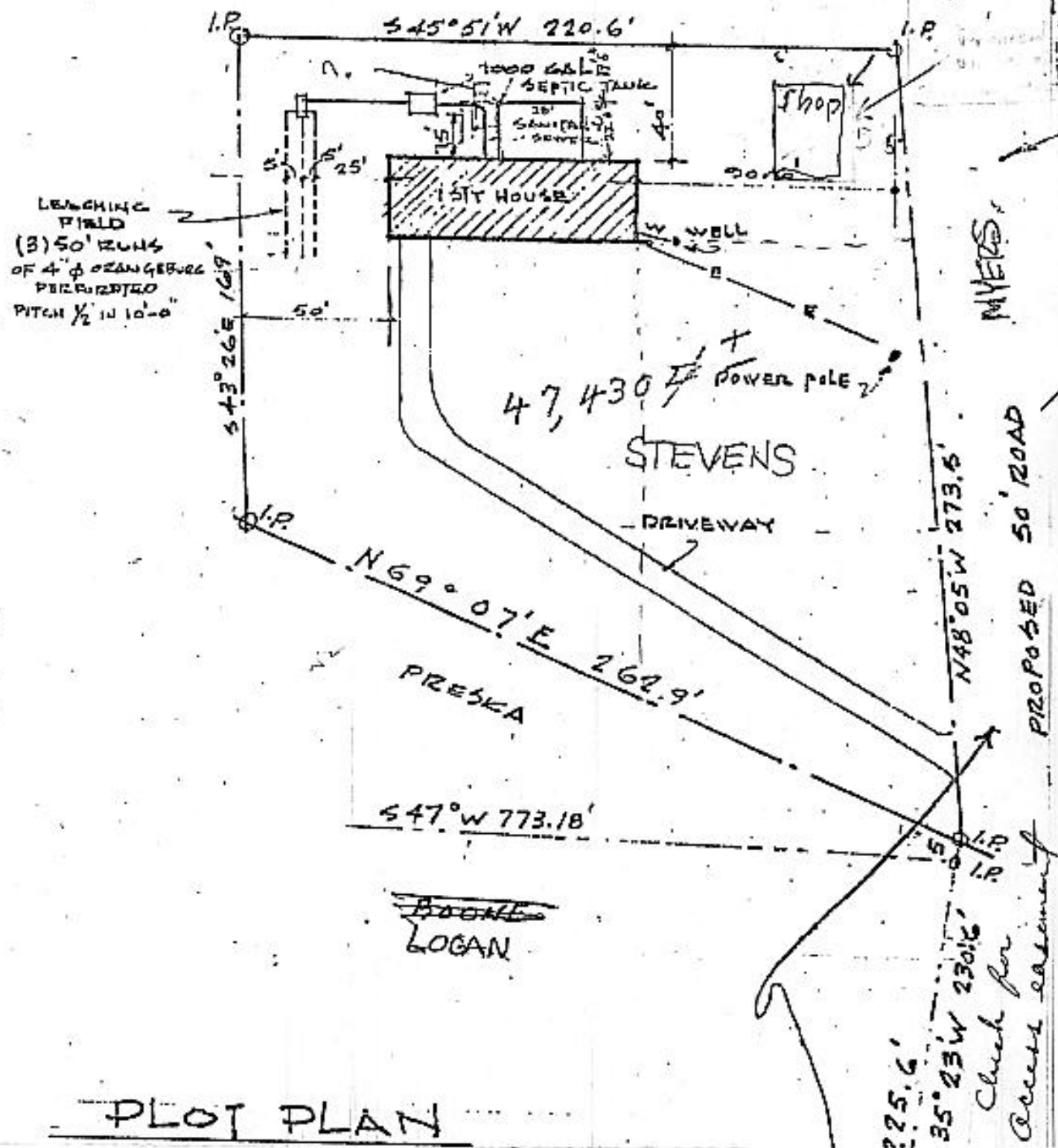
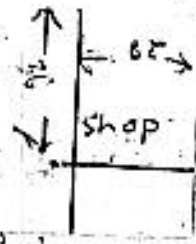


Cont. plan to further subdivide, map will include further Civil Engineering notes

4/26/85

PROPOSED ADDITION 28' x 22' 6"  
 RESULTING IN A 17' 6" SETBACK  
 FROM BACK PROPERTY LINE.  
 RUS PAD/DISK 12' x 22' 6" ON  
 SOUTH SIDE OF PROPOSED ADDITION  
 (DRAWN TO SCALE)

Atchilles, Planning  
 Board Inc.



PLOT PLAN