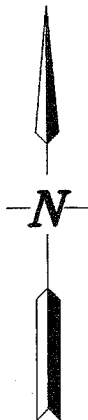
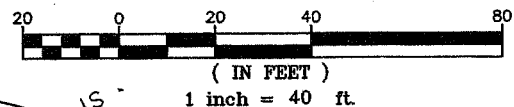


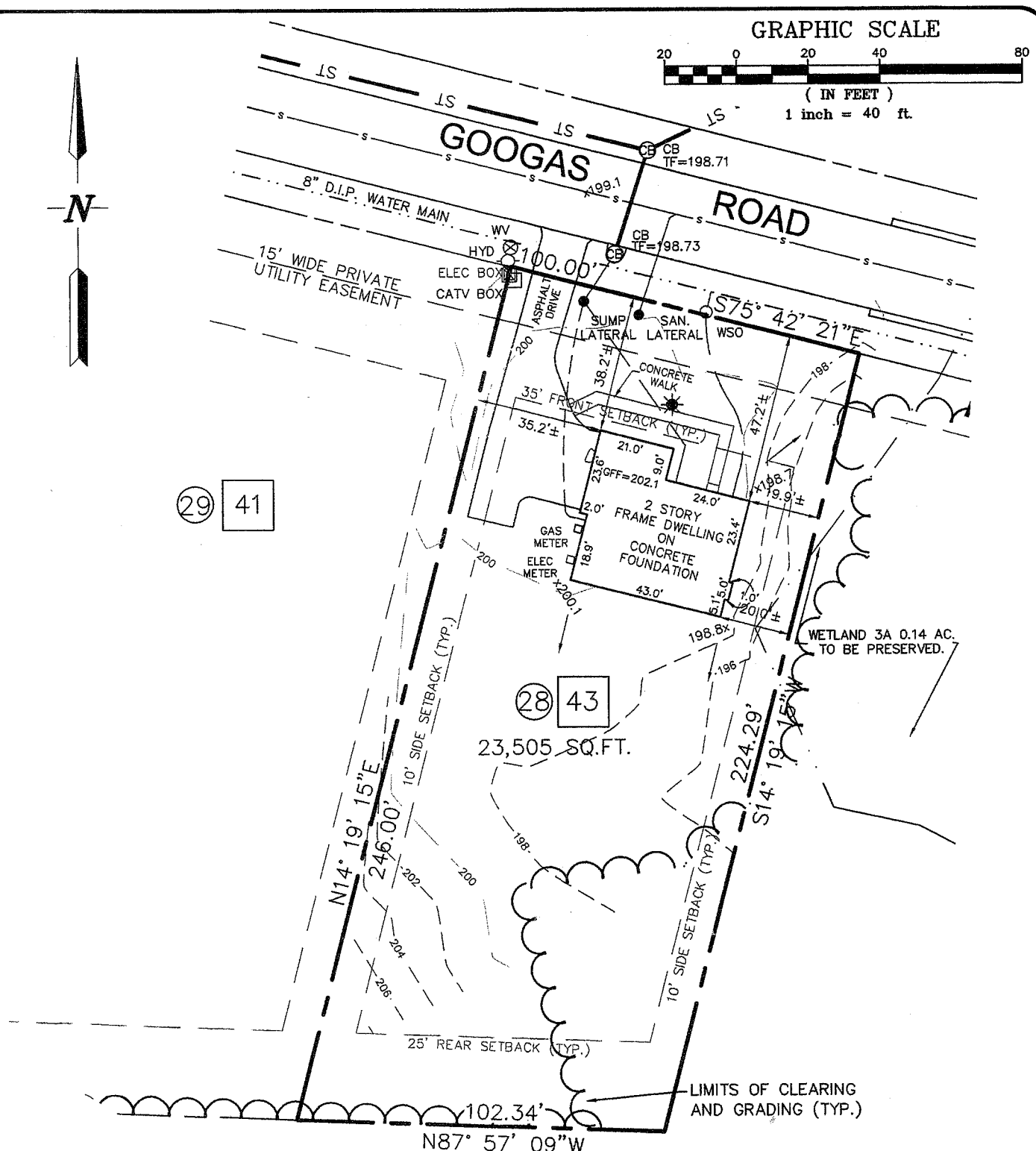
GRAPHIC SCALE



29 41

28 43

23,505 SQ.FT.



'OPEN SPACE'  
CONSERVATION AREA 5 TO  
BE CONVEYED TO H.O.A.

NOTES:

- 1) SURVEYED PARCEL: TOWN OF BETHLEHEM - TAX MAP 63.00, BLOCK 3, PARCEL 43.
- 2) SURVEY PREPARED BY INGALLS & ASSOCIATES, LLP FROM A MARCH 2016 AND A MAY 2016 UPDATE FIELD SURVEY.
- 3) BOUNDARY INFORMATION SHOWN TAKEN FROM MAP REFERENCE NO. .1
- 4) NORTH IS REFERENCED TO NAD 83 NEW YORK STATE PLANES, EAST ZONE.
- 5) SUBJECT TO ALL RIGHTS, EASEMENTS, COVENANTS OR RESTRICTION; RECORDED OR UNRECORDED.
- 6) SUBJECT TO ANY STATEMENT OF FACT AN UP-TO-DATE ABSTRACT OF TITLE WOULD DISCLOSE.
- 7) SUBJECT TO AN EASEMENT GRANTED TO NIAGARA MOHAWK POWER CORPORATION AND VERIZON NEW YORK, INC. FOR DISTRIBUTION OF UNDERGROUND ELECTRIC, GAS AND COMMUNICATION FACILITIES AS RECORDED IN LIBER 3143 OF DEEDS AT PAGE 4.

LEGEND

- x 200.5 DENOTES SPOT ELEVATION
- DENOTES DRAINAGE FLOW

MAP REFERENCES:

1) MAP ENTITLED "SUBDIVISION PLAT, RUSSELL ROAD CONSERVATION SUBDIVISION, RUSSELL & GOOGAS ROADS", TOWN OF BETHLEHEM, COUNTY OF ALBANY, STATE OF NEW YORK AS PREPARED BY INGALLS & ASSOCIATES, LLP ON JULY 5, 2011, LAST REVISED OCTOBER 3, 2013 AND FILED IN THE ALBANY COUNTY CLERK'S