

See map entitled "MAP OF CARSTEAD DRIVE SUBDIVISION SECTION NO. 2 PROPERTY OF REGIONAL DEVELOPMENT CORPORATION" dated October 26, 1966 and made by Edward W. Boutelle and Son, Civil Engineers and Surveyors and filed in the Albany County Clerk's Office as map number 4505 drawer number 164.

16,119#

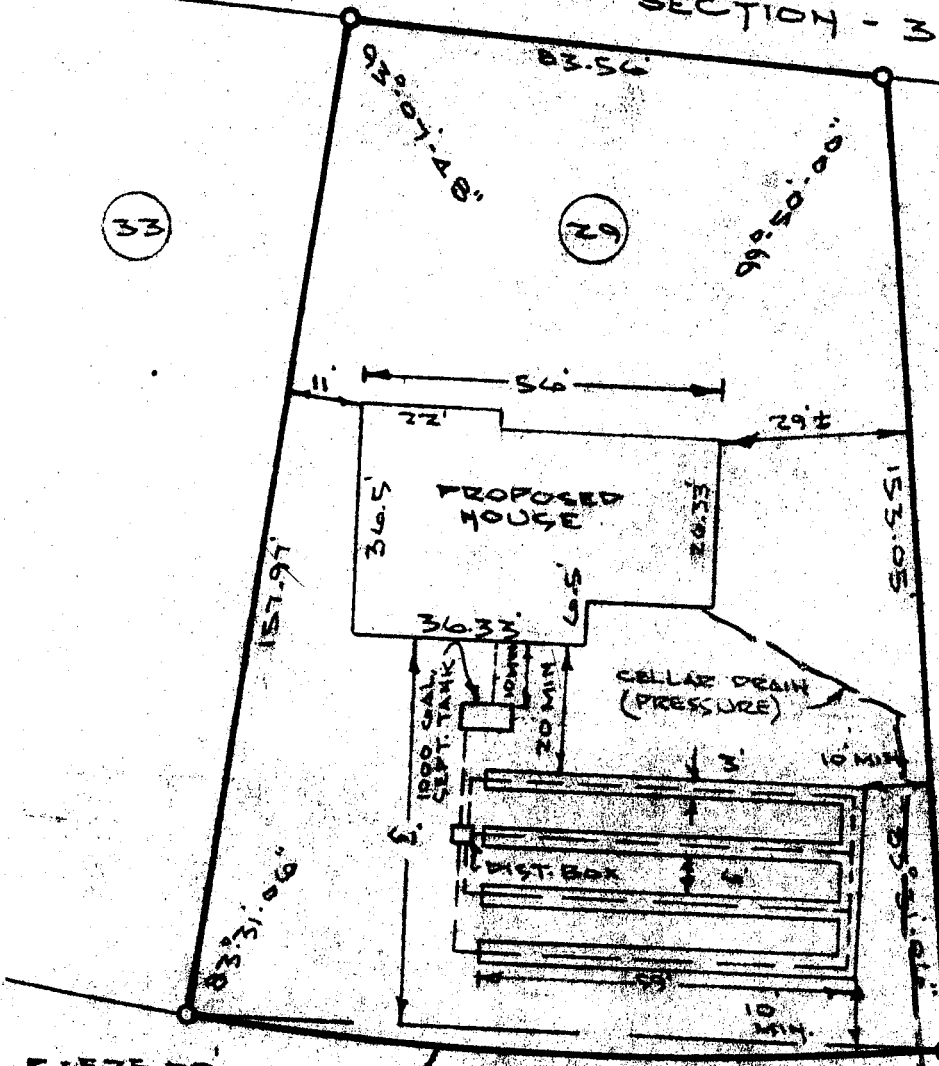
NORTH

MAYFAIR SECTION - 3

33

29

25



APPROVED

OCT 16 1970

BUILDING INSPECTOR
TOWN OF BETHLEHEM

CWD

NEW SCOTLAND ROAD
(MYS. ROUTE NO. 85)

83°-56'-00"
99°-50'-00"
153°-05'-00"
83°-31'-06"
157°-94'

CARSTEAD DRIVE

County: Albany	MAP OF PROPERTY OF CAMPUS CLUB CORPORATION TOWN OF BETHLEHEM	Scale: 1"=30'
State: New York		Date: Oct. 8, 1970
Order No. 70-138	Paul E. Hite and William F. Moser. Licensed Land Surveyors-----Delmar, N.Y.	Revision