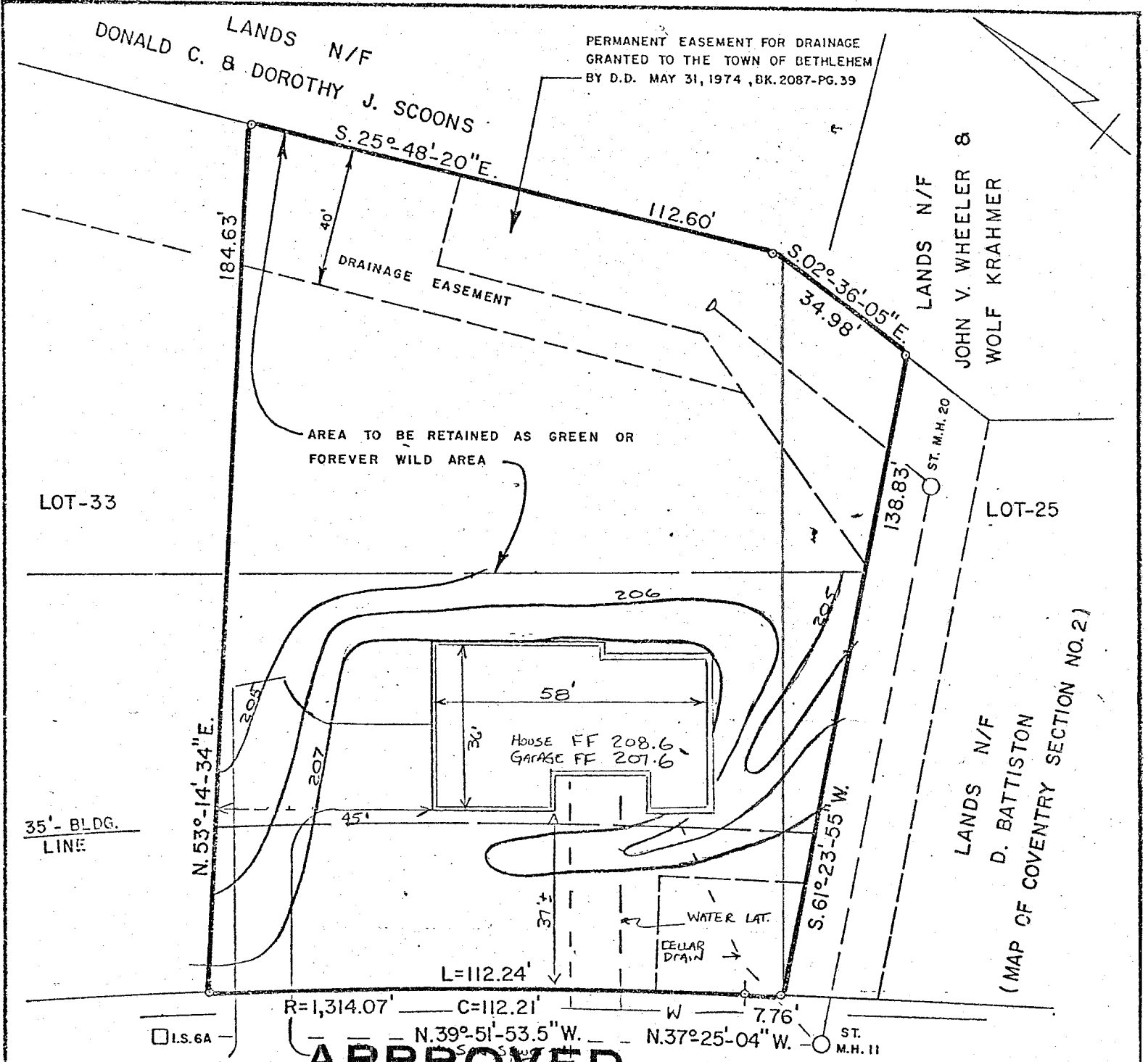


185



MAP REFERENCE:
 "Map of Lyndhurst" to be developed by Rosen-Michaels Inc. dated August 5, 1980, revised January 5, 1983, made by Paul E. Hife, refiled in Albany Co. Clerk's Office on January 10, 1983 in Drawer No. 172 as Map No. 5925.

APPROVED
MIDDLESEX DRIVE
 MAR 16 1984
[Signature] 23,277 #
BUILDING INSPECTOR
TOWN OF BETHLEHEM

DATE	DESCRIPTION	APPR.
3-5-84	FINAL PLOT PLAN & SITE GRADING	WTN
DRAWN BY: G.P.D.		CHECKED BY: R.N.S.
APPROVED BY:		LIC. NO.

LOT-29 MIDDLESEX DRIVE
LYNDHURST
 TOWN OF BETHLEHEM COUNTY OF ALBANY
 SCALE: 1" = 30' DATE: FEB. 23, 1982

C. T. MALE ASSOCIATES, P.C.
 3000 TROY ROAD, SCHENECTADY, N.Y. 12303
 PROFESSIONAL ENGINEERS LAND SURVEYORS LAND PLANNING CONSULTANTS