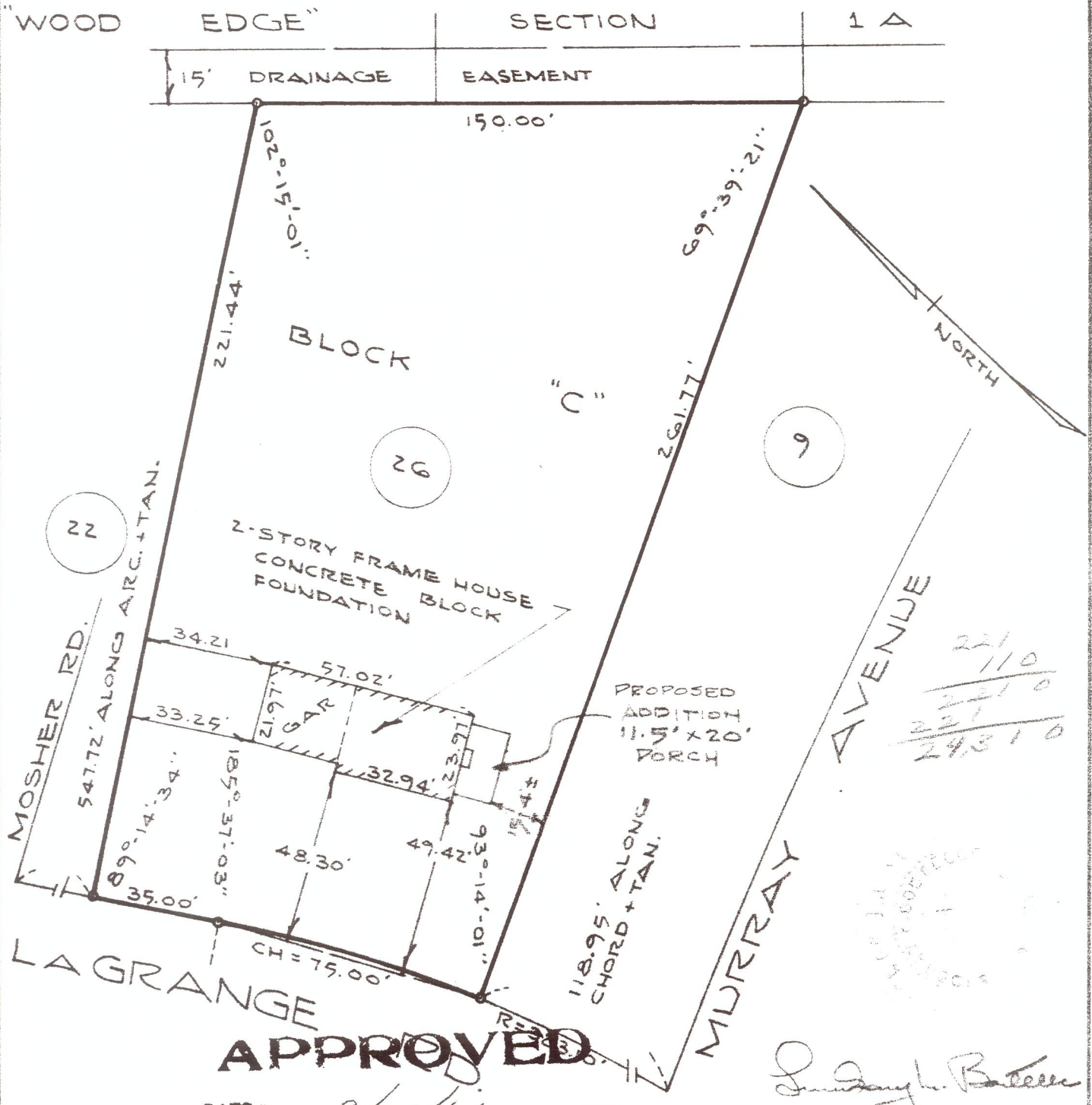


As shown on map entitled, "WOODS EDGE, SECTION 1-G, PORTION OF PROPERTY OF WEBER BROS., INC." dated March 26, 1962 and made by Edward W. Routelle & Son, Civil Engineers and Surveyors, Delmar, New York.



221
110

221 0
221

24310

APPROVED

DATE: 9/21/66

Edward W. Boutelle

COUNTY ALBANY	PART OF PROPERTY OF Building Inspector WEBER BROTHERS INCORPORATED	SCALE 1" = 40'
STATE NEW YORK	Town of Bethlehem DELMAR	DATE NOV. 19, 1963
ORDER NO 0003	EDWARD W. BOUTELLE AND SON CIVIL ENGINEERS AND SURVEYORS DELMAR, NEW YORK	REVISION 9/16/66 Addition