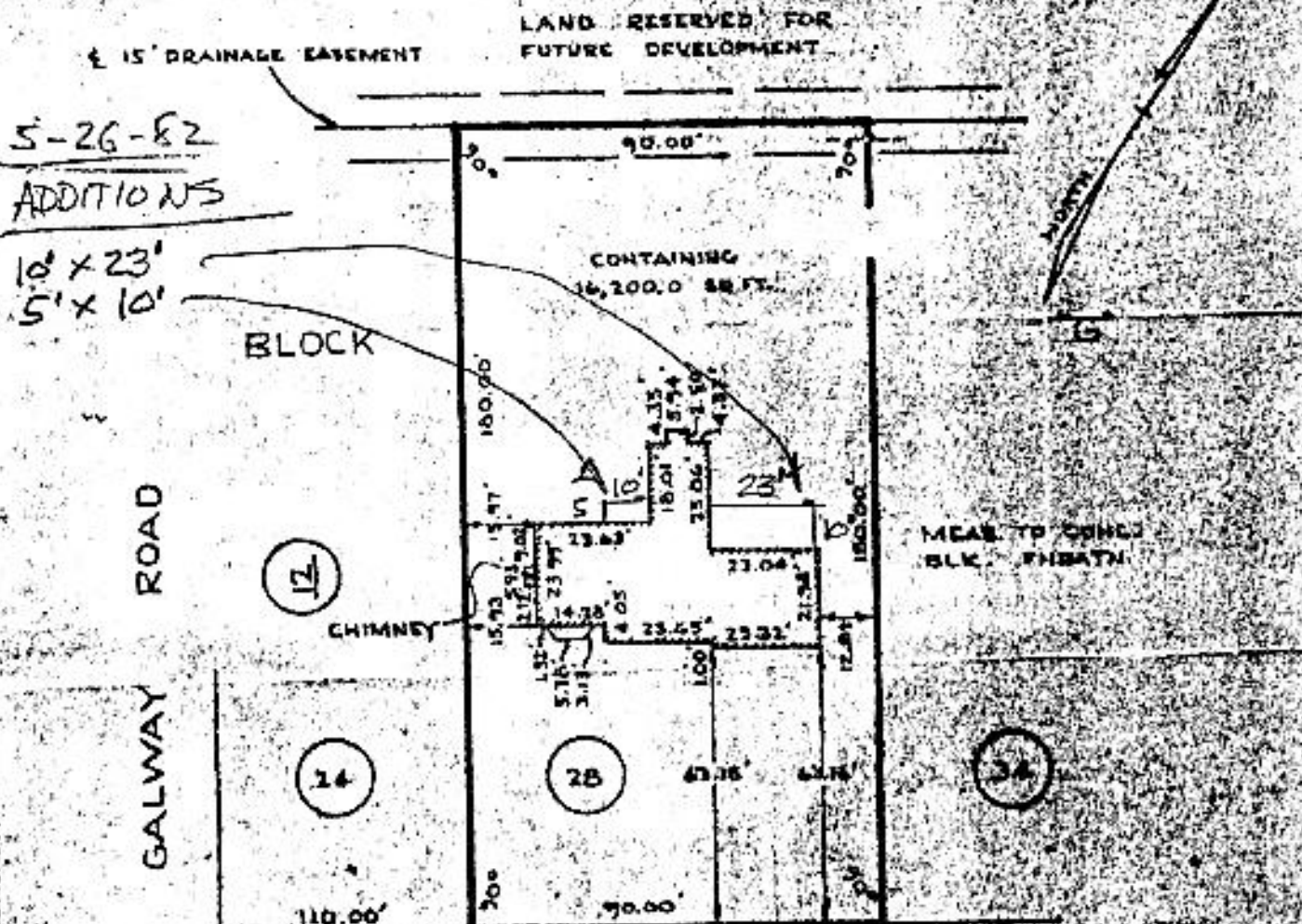


As shown on "Map of Birchwood Acres, Section 2B, Property of Bethlehem Developers Incorporated", dated November 14, 1963 and made by Edward W. Bontelle and Son, Civil Engineers and Surveyors.



WEXFORD ROAD

APPROVED



NOTE: MAY 27 1962
FOUNDATION LOCATION ONLY

Edward W. Bontelle

COUNTY ALBANY	TOWNSHIP TOWN OF BETHLEHEM	MAP OF PROPERTY OF S. SCOTT JACKSON DELMAR.	SCALE 1" = 40'
STATE NEW YORK			DATE April 2, 1965
ORDER NO. 11098	EDWARD W. BONTELLE AND SON CIVIL ENGINEERS AND SURVEYORS DELMAR, NEW YORK		REVISION JULY 15, 1965