

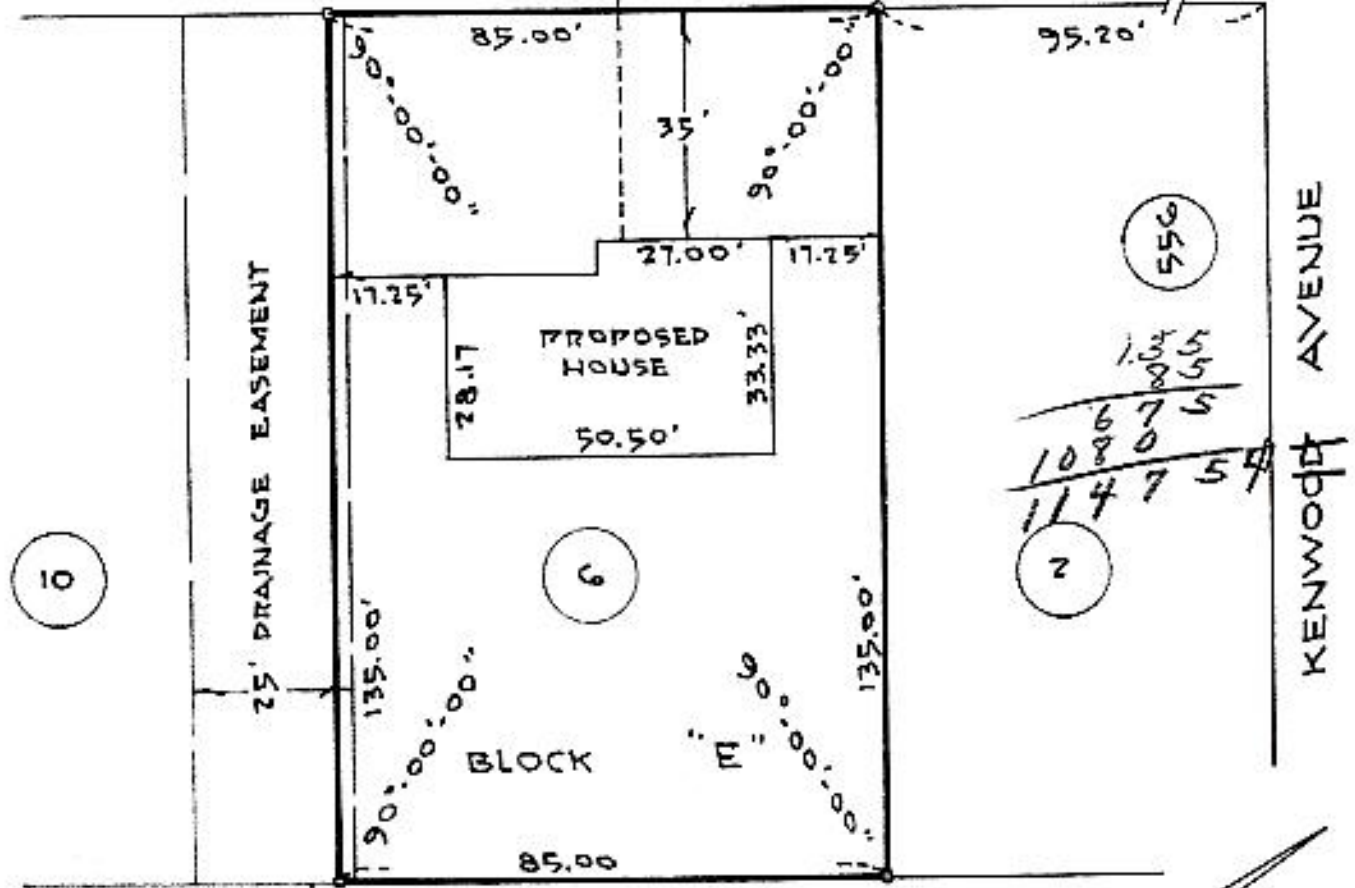
As shown on "Map of Kilmerland - Extension 1, Property of Built-Mor Contracting Corp.", dated May 26, 1965 and made by Edward W. Boutelle & Son, Civil Engineers and Surveyors.



WOODBINE ROAD

E. W. Boutelle

CELLAR DRAIN (PRESSURE)



COUNTY ALBANY	MAP OF PROPERTY OF BUILT-MOR CONTRACTING CORP. DELMAR	SCALE 1" - 30'
STATE NEW YORK		DATE Mar. 8, 1966
ORDER NO 66-108	EDWARD W. BOUTELLE AND SON CIVIL ENGINEERS AND SURVEYORS DELMAR, NEW YORK	REVISION