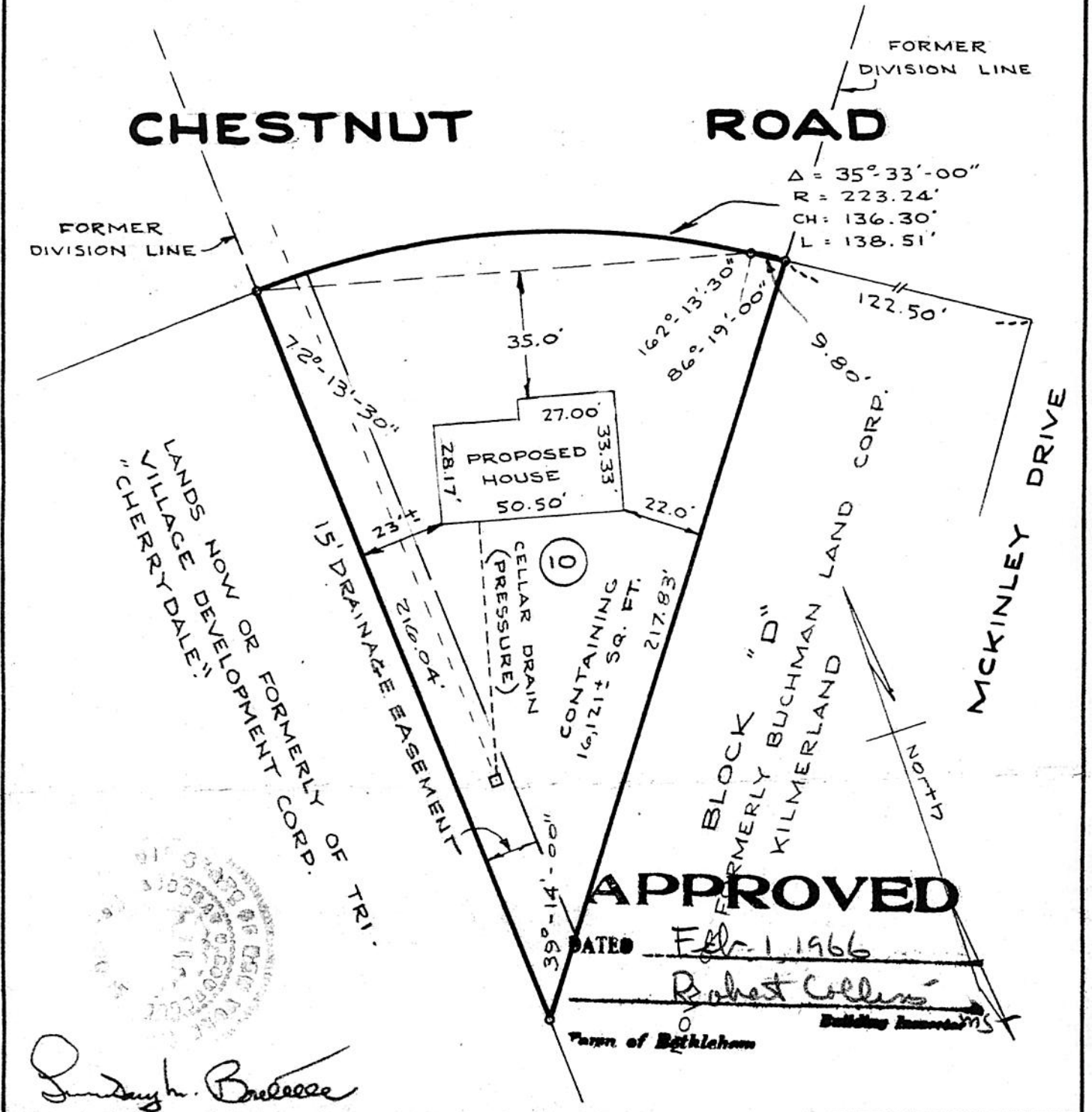


As shown on "Map of Kilmerland - Extension 1, Property of Built-Mor Contracting Corp.", dated May 26, 1965 and made by Edward W. Boutelle & Son, Civil Engineers and Surveyors.



*Edward W. Boutelle*

**APPROVED**

DATED Feb. 1, 1966

*Robert Collins*  
*Building Inspector*

Town of Bethlehem

COUNTY ALBANY	MAP OF PROPERTY OF BUILT-MOR CONTRACTING CORP. DELMAR	SCALE 1" - 40'
STATE NEW YORK		DATE Jan. 27, 1966
ORDER NO. 66-53	EDWARD W. BOUTELLE AND SON CIVIL ENGINEERS AND SURVEYORS DELMAR, NEW YORK	REVISION