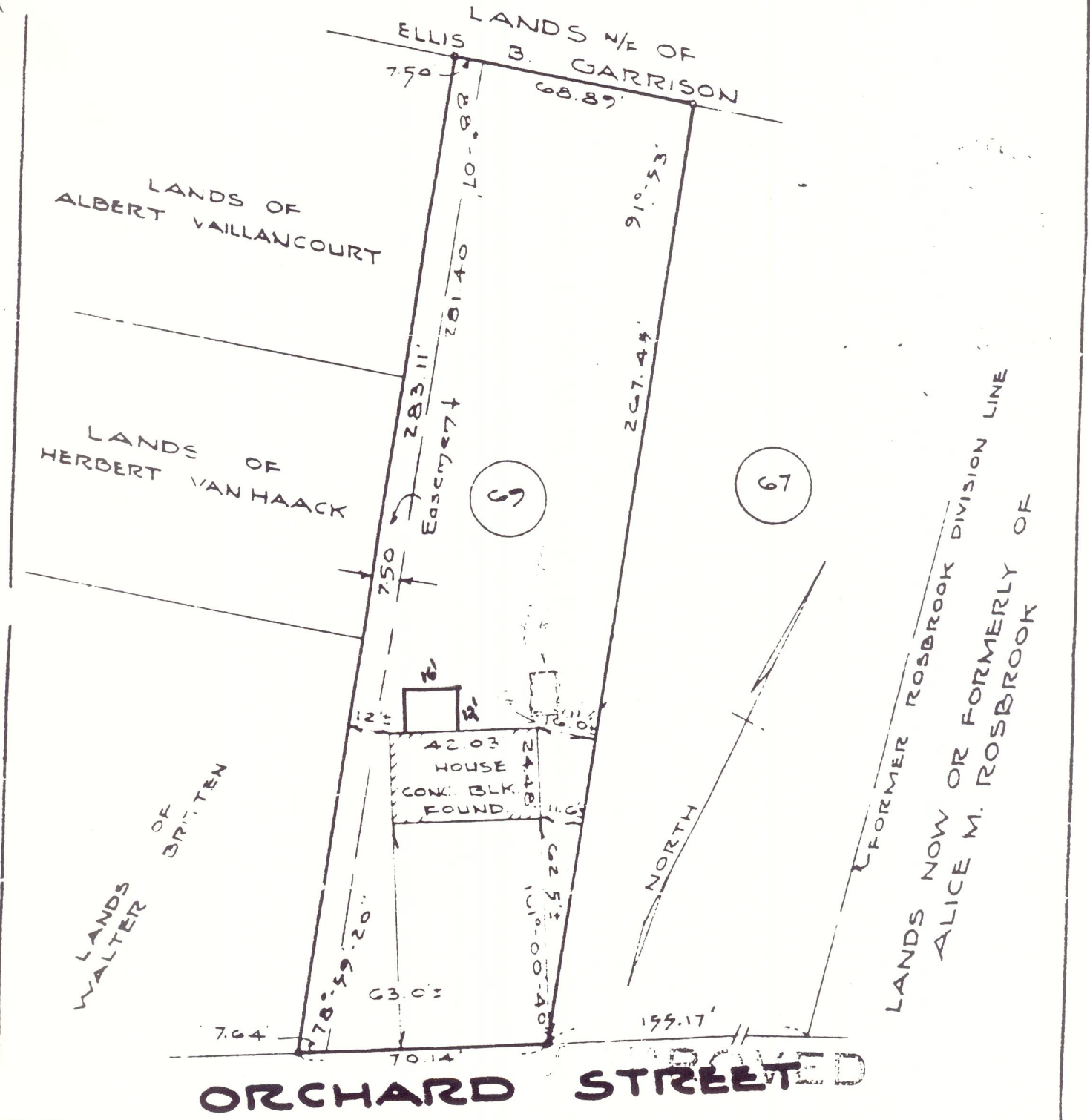


#6

As shown on "Map of Property of Buchman Land Corp.", dated November 20, 1962 and made by Edward W. Boutelle & Son, Civil Engineers and Surveyors.



COUNTY ALBANY	MAP OF PROPERTY OF <i>Buchman</i> BUILT-MOR CONTRACTING CO. INC. INSPECTOR SLINGERLANDS CIVIL ENGINEERS AND SURVEYORS DELMAR, NEW YORK	SCALE 1" - 40'
STATE NEW YORK		DATE April 24, 1963
ORDER NO 0428	EDWARD W. BOUTELLE AND SON CIVIL ENGINEERS AND SURVEYORS DELMAR, NEW YORK	REVISION May 15-1963 <i>Ease.</i> June 17, 1963