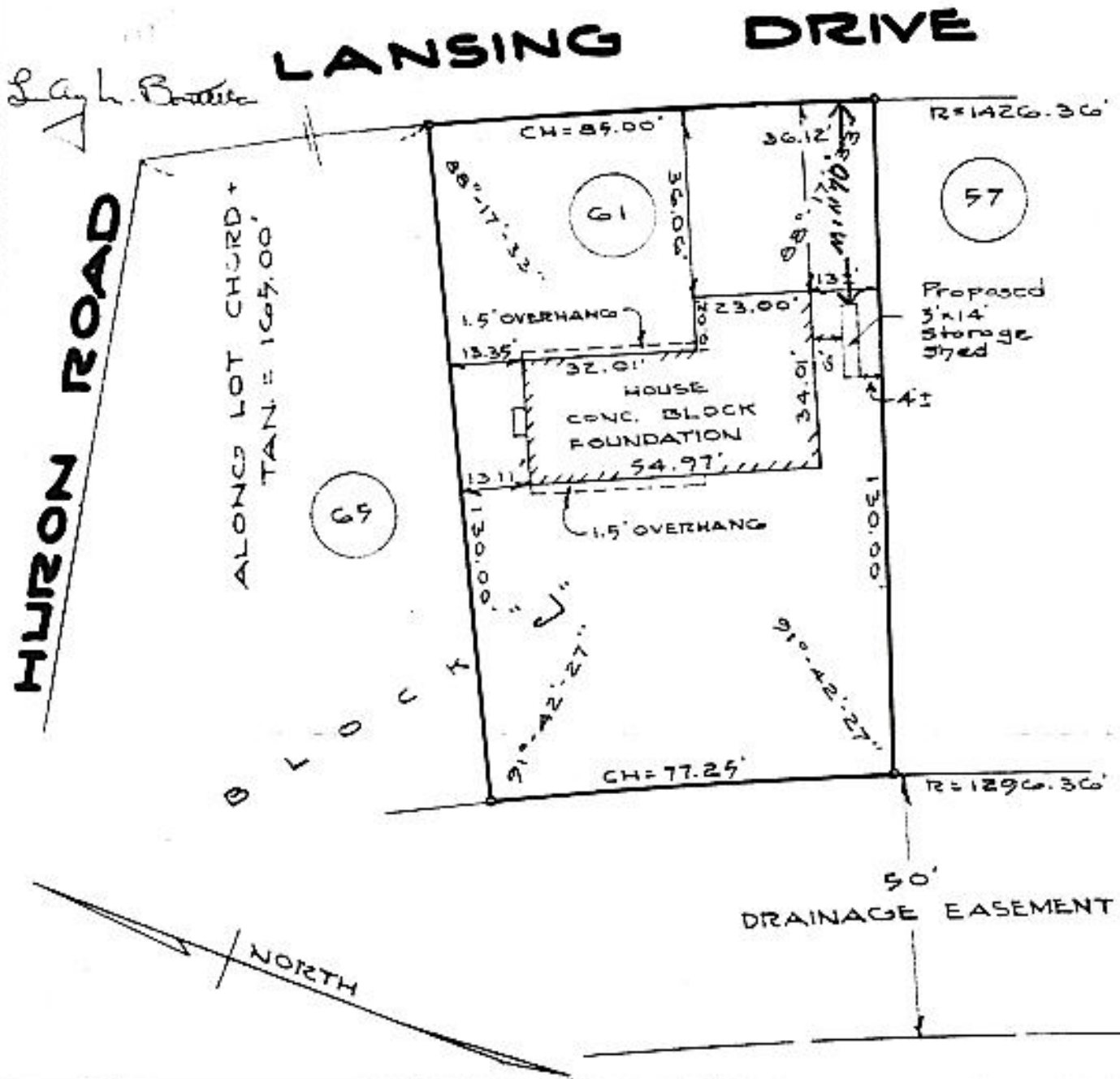


As shown on "MAP OF PORTION OF 'KENAWARE', SECTION #2, PROPERTY OF CHARLES BUCHMAN", dated Feb. 18, 1957, revised May 8, 1959 and made by Edward W. Boutelle & Son, Civil Engineers and Surveyors.



COUNTY ALBANY	MAP OF PROPERTY OF RICHMOND C. AND MARTLYNN J. YOUNG DELMAR	SCALE 1" = 30'
STATE NEW YORK		DATE April 26, 1963
ORDER NO. 9434	EDWARD W. BOUTELLE AND SON CIVIL ENGINEERS AND SURVEYORS DELMAR, NEW YORK	REVISION 8/5/63-shed B-2-Co3 HO. LOCATION