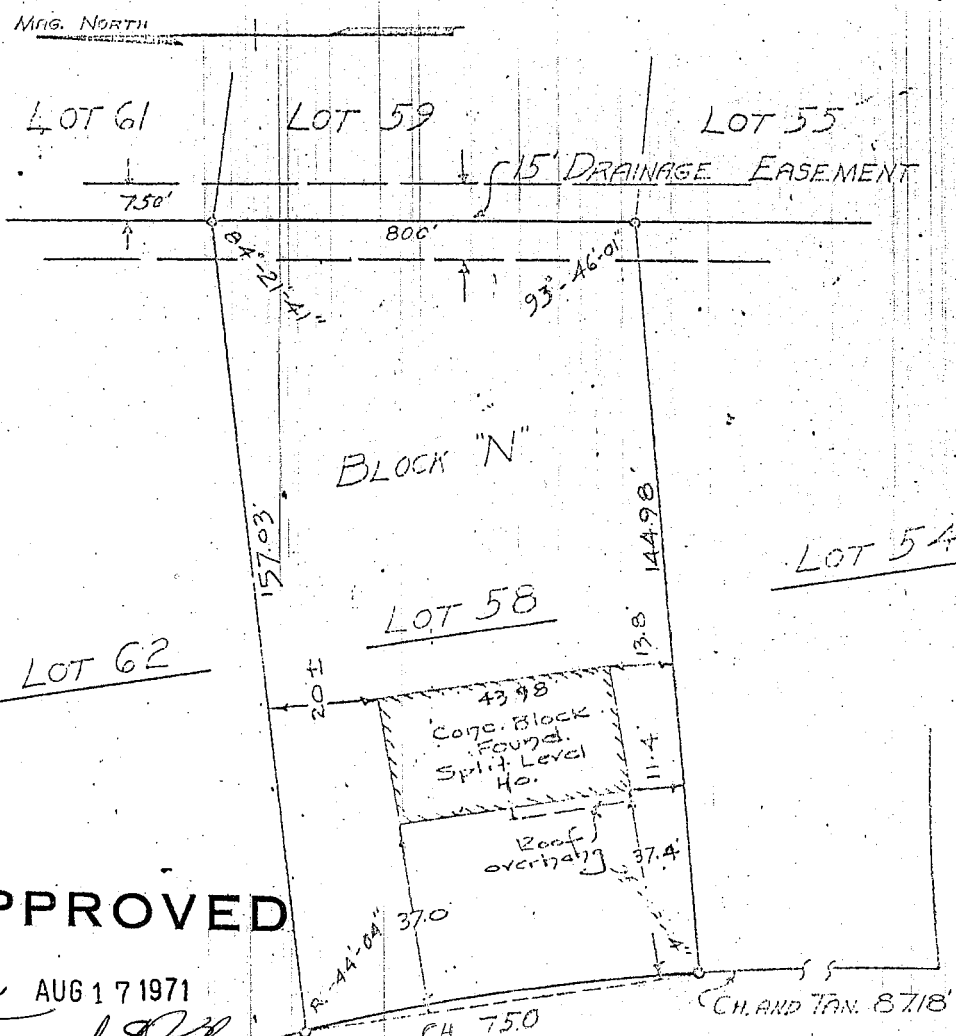


25867



STRATTON PLACE

APPROVED

AUG 17 1971

*Howard E. Blumhans*  
 BUILDING INSPECTOR  
 TOWN OF BETHLEHEM

CH. 750

CH. AND TAN. 8718

LANSING DRIVE

DRIVE

As shown on "MAP OF PORTION OF 'KENAWARE', SECTION #2, PROPERTY OF CHARLES BUCHMAN", dated February 18, 1957, revised May 9, 1959 and made by Edward W. Boutelle and Son, Civil Engineers and Surveyors.

MAP OF PROPERTY OF  
 WILLIAMS BROS.  
 DELMAR

ALBANY COUNTY  
 SCALE 1" = 30'

NEW YORK  
 NOVEMBER 22, 1960

SURVEY AND MAP BY:

Edward W. Boutelle and Son  
 Civil Engineers and Surveyors  
 Delmar, N. Y.

Revised 4/13/61 - House located

1-2T-112-125-1-107

674 - 3861